

STR # 42232 / Created March 18, 2025

Monthly STAR Report : Wingate by Wyndham High Point

For the Month of: February 2025

Currency: US Dollar / Competitive Set Data Excludes Subject Property



Table Of Contents	1
Monthly Performance at a Glance	2
STAR Summary	3
Competitive Set Report	4
Response Report	5
Day of Week & Weekday/Weekend	6
Daily Data for the Month	7
Help	8

Corporate North American Headquarters
T: +1 (615) 824 8664
support@str.com www.str.com

International Headquarters
T: +44 (0) 207 922 1930
hotelinfo@str.com www.str.com

2025 © CoStar Group. This STR Report is a publication of STR, LLC and STR Global, Ltd., CoStar Group companies, and is intended solely for use by paid subscribers. The information in the STR Report is provided on an "as is" and "as available" basis and should not be construed as investment, tax, accounting or legal advice. Reproduction or distribution of this STR Report, in whole or part, without written permission is prohibited and subject to legal action. If you have received this report and are NOT a subscriber to this STR Report, please contact us immediately. Source: 2025 STR, LLC / STR Global, Ltd. trading as "STR".

Tab 2 - Monthly Performance at a Glance - My Property vs. Competitive Set

Wingate by Wyndham High Point 3901 Sedgebrook St High Point, NC 27265 Phone: (336) 812-8787
STR # 42232 ChainID: 46797 MgtCo: None Owner: None
For the Month of: February 2025 Date Created: March 18, 2025 Monthly Competitive Set Data Excludes Subject Property

February 2025

	Occupancy (%)			ADR			RevPAR		
	My Prop	Comp Set	Index (MPI)	My Prop	Comp Set	Index (ARI)	My Prop	Comp Set	Index (RGI)
Current Month	26.5	62.7	42.3	103.69	109.74	94.5	27.48	68.81	39.9
Year To Date	22.8	55.8	40.8	99.70	106.13	93.9	22.74	59.27	38.4
Running 3 Month	20.5	53.1	38.7	98.02	104.65	93.7	20.13	55.56	36.2
Running 12 Month	35.5	65.2	54.5	116.54	122.26	95.3	41.39	79.73	51.9

February 2025 vs. 2024 Percent Change (%)

	Occupancy			ADR			RevPAR		
	My Prop	Comp Set	Index (MPI)	My Prop	Comp Set	Index (ARI)	My Prop	Comp Set	Index (RGI)
Current Month	-33.6	-5.6	-29.6	5.6	0.4	5.2	-29.8	-5.2	-26.0
Year To Date	-36.3	1.0	-36.9	5.3	-1.2	6.6	-32.9	-0.2	-32.7
Running 3 Month	-44.2	7.3	-48.0	4.7	-1.5	6.3	-41.6	5.7	-44.7
Running 12 Month	-15.5	7.9	-21.7	5.4	-1.1	6.6	-10.9	6.6	-16.5

2025 © CoStar Group. This STR Report is a publication of STR, LLC and STR Global, Ltd., CoStar Group companies, and is intended solely for use by paid subscribers. The information in the STR Report is provided on an “as is” and “as available” basis and should not be construed as investment, tax, accounting or legal advice. Reproduction or distribution of this STR Report, in whole or part, without written permission is prohibited and subject to legal action. If you have received this report and are NOT a subscriber to this STR Report, please contact us immediately. Source: 2025 STR, LLC / STR Global, Ltd. trading as “STR”.

Tab 3 - STAR Summary - My Property vs. Comp Set and Industry Segments

Wingate by Wyndham High Point 3901 Sedgebrook St High Point, NC 27265 Phone: (336) 812-8787
STR # 42232 ChainID: 46797 MgtCo: None Owner: None
For the Month of: February 2025 Date Created: March 18, 2025 Monthly Competitive Set Data Excludes Subject Property

Wingate by Wyndham High Point
Market: Greensboro/Winston Salem, NC
Market Class: Midscale Class
Submarket: Burlington/High Point, NC
Submarket Scale: Midscale Chains
Competitive Set: Competitors

Occupancy (%)							
Current Month	% Chg	Year to Date	% Chg	Running 3 Month	% Chg	Running 12 Month	% Chg
26.5	-33.6	22.8	-36.3	20.5	-44.2	35.5	-15.5
56.9	-1.2	53.3	2.3	51.2	2.9	59.9	2.7
48.6	-7.7	45.6	-4.4	44.4	-6.1	55.3	-1.2
52.6	-5.8	49.9	-3.1	49.0	-3.3	58.6	-0.6
55.1	-5.4	51.3	-1.6	50.3	-0.2	62.4	1.8
62.7	-5.6	55.8	1.0	53.1	7.3	65.2	7.9

Supply			
Month % Chg	YTD % Chg	Run 3 Mon % Chg	Run 12 Mon % Chg
-3.4	-1.7	-1.1	-0.3
2.0	2.0	2.0	1.5
3.0	3.0	3.0	-0.5
0.3	0.3	0.3	0.9
1.6	1.6	1.1	2.0
0.0	0.0	0.0	0.0

Wingate by Wyndham High Point
Market: Greensboro/Winston Salem, NC
Market Class: Midscale Class
Submarket: Burlington/High Point, NC
Submarket Scale: Midscale Chains
Competitive Set: Competitors

Average Daily Rate							
Current Month	% Chg	Year to Date	% Chg	Running 3 Month	% Chg	Running 12 Month	% Chg
103.69	5.6	99.70	5.3	98.02	4.7	116.54	5.4
107.24	0.3	103.33	1.2	101.25	1.6	114.51	1.2
78.99	3.2	75.74	1.8	75.23	2.4	87.01	2.3
99.36	2.2	95.32	2.9	93.83	3.6	105.60	3.6
116.21	2.8	113.06	3.4	111.86	4.1	126.33	3.9
109.74	0.4	106.13	-1.2	104.65	-1.5	122.26	-1.1

Demand			
Month % Chg	YTD % Chg	Run 3 Mon % Chg	Run 12 Mon % Chg
-35.9	-37.3	-44.8	-15.7
0.8	4.4	5.0	4.2
-4.9	-1.5	-3.3	-1.7
-5.5	-2.7	-2.9	0.3
-3.8	0.0	0.9	3.8
-5.6	1.0	7.3	7.9

Wingate by Wyndham High Point
Market: Greensboro/Winston Salem, NC
Market Class: Midscale Class
Submarket: Burlington/High Point, NC
Submarket Scale: Midscale Chains
Competitive Set: Competitors

RevPAR							
Current Month	% Chg	Year to Date	% Chg	Running 3 Month	% Chg	Running 12 Month	% Chg
27.48	-29.8	22.74	-32.9	20.13	-41.6	41.39	-10.9
61.06	-0.9	55.11	3.6	51.85	4.5	68.62	3.9
38.35	-4.8	34.57	-2.6	33.40	-3.9	48.08	1.1
52.22	-3.7	47.59	-0.3	46.00	0.2	61.83	3.0
64.07	-2.7	57.94	1.8	56.24	3.9	78.81	5.8
68.81	-5.2	59.27	-0.2	55.56	5.7	79.73	6.6

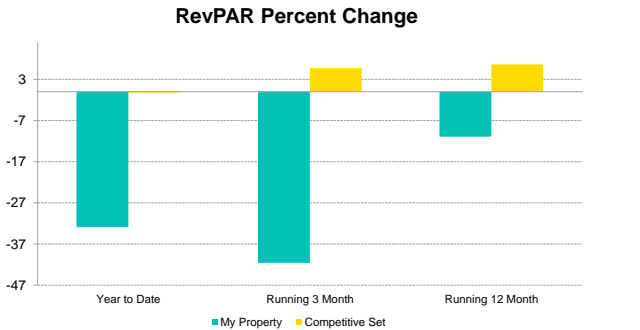
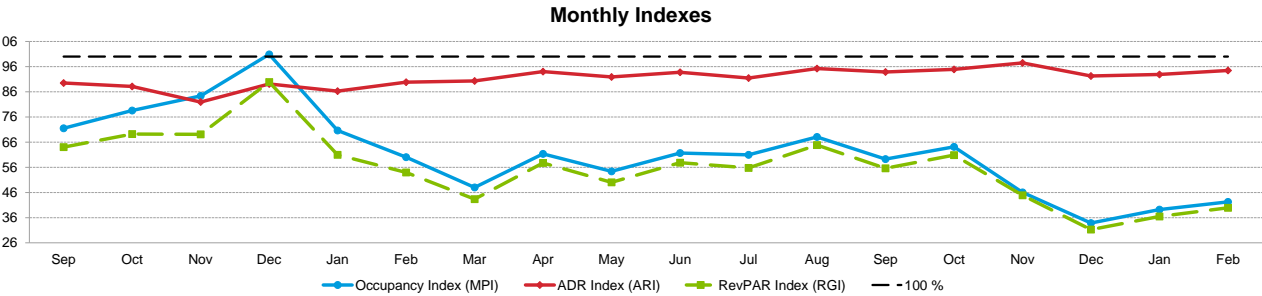
Revenue			
Month % Chg	YTD % Chg	Run 3 Mon % Chg	Run 12 Mon % Chg
-32.2	-34.0	-42.2	-11.2
1.1	5.7	6.7	5.4
-1.9	0.3	-1.0	0.6
-3.4	0.1	0.5	4.0
-1.1	3.4	5.0	7.8
-5.2	-0.2	5.7	6.6

Market: Greensboro/Winston Salem, NC
Market Class: Midscale Class
Submarket: Burlington/High Point, NC
Submarket Scale: Midscale Chains
Competitive Set: Competitors

Census/Sample - Properties & Rooms					
Census		Sample		Sample %	
Properties	Rooms	Properties	Rooms	Rooms	
230	21897	176	18956	86.6	
34	3022	27	2560	84.7	
92	6090	61	4782	78.5	
36	2825	36	2825	100.0	
5	470	5	470	100.0	

Tab 4 - Competitive Set Report

Wingate by Wyndham High Point 3901 Sedgebrook St High Point, NC 27265 Phone: (336) 812-8787
STR # 42232 ChainID: 46797 MgtCo: None Owner: None
For the Month of: February 2025 Date Created: March 18, 2025 Monthly Competitive Set Data Excludes Subject Property



Occupancy (%)	2023				2024												2025	
	Sep	Oct	Nov	Dec	Jan	Feb	Mar	Apr	May	Jun	Jul	Aug	Sep	Oct	Nov	Dec	Jan	Feb
My Property	44.4	52.8	48.8	38.7	31.9	39.9	34.8	48.8	33.8	42.8	41.8	45.6	37.8	49.5	28.8	16.2	19.5	26.5
Competitive Set	62.2	67.2	57.9	38.4	45.2	66.4	72.4	79.5	62.1	69.4	68.5	67.0	63.8	77.2	62.6	47.9	49.6	62.7
Index (MPI)	71.5	78.6	84.4	100.9	70.6	60.0	48.0	61.4	54.4	61.7	61.0	68.1	59.3	64.1	46.0	33.9	39.2	42.3
Rank	6 of 6	6 of 6	5 of 6	4 of 6	5 of 6	6 of 6	6 of 6	6 of 6	6 of 6	6 of 6	6 of 6	6 of 6	6 of 6	6 of 6	6 of 6	6 of 6	6 of 6	6 of 6

% Chg		2023				2024												2025	
		Sep	Oct	Nov	Dec	Jan	Feb	Mar	Apr	May	Jun	Jul	Aug	Sep	Oct	Nov	Dec	Jan	Feb
My Property		36.0	1.8	54.2	56.7	-11.3	21.4	-4.6	14.4	-8.2	-7.6	10.1	-4.7	-14.9	-6.2	-41.0	-58.2	-39.0	-33.6
Competitive Set		-5.3	-1.4	8.1	-24.8	-7.3	10.3	10.5	12.0	6.2	5.8	4.9	5.9	2.7	14.9	8.1	24.6	9.8	-5.6
Index (MPI)		43.6	3.2	42.6	108.4	-4.3	10.1	-13.7	2.1	-13.5	-12.6	5.0	-10.0	-17.1	-18.4	-45.4	-66.4	-44.5	-29.6
Rank		1 of 6	3 of 6	2 of 6	1 of 6	3 of 6	3 of 6	4 of 6	2 of 6	5 of 6	5 of 6	2 of 6	5 of 6	6 of 6	6 of 6	6 of 6	6 of 6	6 of 6	6 of 6

Year To Date			Running 3 Month			Running 12 Month		
2023	2024	2025	2023	2024	2025	2023	2024	2025
34.5	35.8	22.8	31.1	36.8	20.5	36.7	42.0	35.5
54.2	55.3	55.8	53.1	49.5	53.1	62.0	60.5	65.2
63.6	64.7	40.8	58.6	74.4	38.7	59.3	69.5	54.5
6 of 6	6 of 6	6 of 6	6 of 6	5 of 6	6 of 6	6 of 6	6 of 6	6 of 6

ADR	2023				2024												2025	
	Sep	Oct	Nov	Dec	Jan	Feb	Mar	Apr	May	Jun	Jul	Aug	Sep	Oct	Nov	Dec	Jan	Feb
My Property	104.68	140.72	99.84	91.72	90.63	98.16	101.89	148.24	109.97	109.93	111.02	111.42	106.09	150.12	109.29	93.53	94.79	103.69
Competitive Set	116.93	159.70	121.86	102.95	105.04	109.26	112.85	157.62	119.69	117.25	121.35	116.99	113.04	158.14	112.12	101.35	102.02	109.74
Index (ARI)	89.5	88.1	81.9	89.1	86.3	89.8	90.3	94.1	91.9	93.8	91.5	95.2	93.9	94.9	97.5	92.3	92.9	94.5
Rank	5 of 6	4 of 6	5 of 6	5 of 6	5 of 6	5 of 6	5 of 6	5 of 6	5 of 6	5 of 6	4 of 6	4 of 6	4 of 6	4 of 6	4 of 6	5 of 6	4 of 6	4 of 6

% Chg		2023				2024												2025	
		Sep	Oct	Nov	Dec	Jan	Feb	Mar	Apr	May	Jun	Jul	Aug	Sep	Oct	Nov	Dec	Jan	Feb
My Property		-6.0	0.7	-6.8	-5.8	58.6	-14.6	-10.6	-2.8	-3.5	-0.4	12.4	11.8	1.3	6.7	9.5	2.0	4.6	5.6
Competitive Set		3.4	1.3	11.0	9.9	11.2	1.2	-10.5	-3.3	2.4	-1.8	10.1	4.2	-3.3	-1.0	-8.0	-1.6	-2.9	0.4
Index (ARI)		-9.1	-0.6	-16.0	-14.3	42.6	-15.6	-0.1	0.5	-5.8	1.4	2.1	7.3	4.8	7.7	19.0	3.6	7.7	5.2
Rank		6 of 6	3 of 6	6 of 6	6 of 6	1 of 6	6 of 6	3 of 6	3 of 6	6 of 6	3 of 6	4 of 6	3 of 6	2 of 6	2 of 6	1 of 6	2 of 6	1 of 6	1 of 6

Year To Date			Running 3 Month			Running 12 Month		
2023	2024	2025	2023	2024	2025	2023	2024	2025
83.25	94.69	99.70	87.12	93.62	98.02	111.04	110.58	116.54
101.56	107.45	106.13	98.95	106.24	104.65	117.02	123.67	122.26
82.0	88.1	93.9	88.0	88.1	93.7	94.9	89.4	95.3
5 of 6	5 of 6	4 of 6	5 of 6	5 of 6	4 of 6	4 of 6	5 of 6	4 of 6

RevPAR	2023				2024												2025	
	Sep	Oct	Nov	Dec	Jan	Feb	Mar	Apr	May	Jun	Jul	Aug	Sep	Oct	Nov	Dec	Jan	Feb
My Property	46.52	74.25	48.77	35.54	28.95	39.15	35.43	72.35	37.14	47.05	46.38	50.85	40.12	74.31	31.48	15.16	18.46	27.48
Competitive Set	72.69	107.26	70.55	39.54	47.49	72.58	81.69	125.37	74.27	81.35	83.17	78.41	72.14	122.09	70.17	48.51	50.65	68.81
Index (RGI)	64.0	69.2	69.1	89.9	61.0	53.9	43.4	57.7	50.0	57.8	55.8	64.8	55.6	60.9	44.9	31.3	36.4	39.9
Rank	6 of 6	5 of 6	6 of 6	5 of 6	6 of 6	6 of 6	6 of 6	6 of 6	6 of 6	6 of 6	6 of 6	6 of 6	6 of 6	6 of 6	6 of 6	6 of 6	6 of 6	6 of 6

% Chg		2023				2024												2025	
		Sep	Oct	Nov	Dec	Jan	Feb	Mar	Apr	May	Jun	Jul	Aug	Sep	Oct	Nov	Dec	Jan	Feb
My Property		27.9	2.5	43.6	47.5	40.7	3.7	-14.7	11.2	-11.5	-7.9	23.7	6.6	-13.8	0.1	-35.4	-57.3	-36.2	-29.8
Competitive Set		-2.0	-0.1	20.0	-17.4	3.1	11.6	-1.1	8.3	8.8	4.0	15.4	10.3	-0.8	13.8	-0.5	22.7	6.6	-5.2
Index (RGI)		30.6	2.6	19.7	78.6	36.5	-7.1	-13.7	2.6	-18.6	-11.4	7.2	-3.4	-13.1	-12.1	-35.1	-65.2	-40.2	-26.0
Rank		1 of 6	3 of 6	3 of 6	2 of 6	2 of 6	4 of 6	5 of 6	2 of 6	5 of 6	5 of 6	3 of 6	4 of 6	6 of 6	5 of 6	6 of 6	6 of 6	6 of 6	6 of 6

Year To Date			Running 3 Month			Running 12 Month		
2023	2024	2025	2023	2024	2025	2023	2024	2025
28.72	33.88	22.74	27.13	34.45	20.13	40.78	46.48	41.39
55.06	59.39	59.27	52.58	52.56	55.56	72.51	74.76	79.73
52.2	57.0	38.4	51.6	65.5	36.2	56.2	62.2	51.9
6 of 6	6 of 6	6 of 6	6 of 6	5 of 6	6 of 6	6 of 6	6 of 6	6 of 6

% Chg		2023				2024												2025	
		Sep	Oct	Nov	Dec	Jan	Feb	Mar	Apr	May	Jun	Jul	Aug	Sep	Oct	Nov	Dec	Jan	Feb
My Property		-2.7	17.9	-32.9		2.0	27.0	-41.6		19.0	14.0	-10.9		19.4	7.9	-0.2		37.3	3.1
Competitive Set		19.4	7.9	-0.2		19.7	0.0	5.7		37.3	3.1	6.6		-18.5	9.3	-32.7		-13.4	10.5
Index (RGI)		-18.5	9.3	-32.7		-14.8	27.0	-44.7		-13.4	10.5	-16.5		5 of 6	2 of 6	6 of 6		4 of 6	1 of 6
Rank		5 of 6	2 of 6	6 of 6		5 of 6	2 of 6	6 of 6		4 of 6	1 of 6	6 of 6		5 of 6	2 of 6	6 of 6		4 of 6	1 of 6

Tab 5 - Response Report

Wingate by Wyndham High Point 3901 Sedgebrook St High Point, NC 27265 Phone: (336) 812-8787
STR # 42232 ChainID: 46797 MgtCo: None Owner: None
For the Month of: February 2025 Date Created: March 18, 2025

This Year
Feb 14th - Valentine's Day
Feb 17th - Presidents' Day

February 2025 (This Year)

Sun	Mon	Tue	Wed	Thu	Fri	Sat
						1
2	3	4	5	6	7	8
9	10	11	12	13	14	15
16	17	18	19	20	21	22
23	24	25	26	27	28	

February 2024 (Last Year)

Sun	Mon	Tue	Wed	Thu	Fri	Sat
				1	2	3
4	5	6	7	8	9	10
11	12	13	14	15	16	17
18	19	20	21	22	23	24
25	26	27	28	29		

Last Year
Feb 14th - Valentine's Day
Feb 19th - Presidents' Day

STR#	Name	City, State	Zip	Phone	Rooms	Open Date
42232	Wingate by Wyndham High Point	High Point, NC	27265	(336) 812-8787	81	200010
32728	Hampton Inn Greensboro-Airport	Greensboro, NC	27409	(336) 605-5500	125	199606
33651	Four Points by Sheraton Greensboro Airport	Greensboro, NC	27409	(336) 882-6666	112	199703
37600	Clarion Pointe Greensboro Airport	Greensboro, NC	27409	(336) 454-0333	60	199901
48038	Fairfield Inn Greensboro Airport	Greensboro, NC	27409	(336) 841-0140	78	200304
58872	Holiday Inn Express & Suites Greensboro - Airport	Greensboro, NC	27409-9400	(336) 882-0004	95	200906
					551	

2023												2024												
Mar	Apr	May	Jun	Jul	Aug	Sep	Oct	Nov	Dec	Jan	Feb	Mar	Apr	May	Jun	Jul	Aug	Sep	Oct	Nov	Dec	Jan	Feb	
●	●	●	●	●	●	●	●	●	●	●	●	●	●	●	●	●	●	●	●	●	●	●	●	●
●	●	●	●	●	●	●	●	●	●	●	●	●	●	●	●	●	●	●	●	●	●	●	●	●
●	●	●	●	●	●	●	●	○	●	●	●	●	●	●	●	●	●	●	●	●	●	●	●	●
●	●	●	●	●	●	●	●	●	●	●	●	●	●	●	●	●	●	●	●	●	●	●	●	●
●	●	●	●	●	●	●	●	●	●	●	●	●	●	●	●	●	●	●	●	●	●	●	●	●
●	●	●	●	●	●	●	●	●	●	●	●	●	●	●	●	●	●	●	●	●	●	●	●	●

Data received:
○ = Monthly Only
● = Monthly & Daily

Tab 6 - Day of Week and Weekday/Weekend Report

Wingate by Wyndham High Point

3901 Sedgebrook St

High Point, NC 27265

Phone: (336) 812-8787

STR # 42232

ChainID: 46797

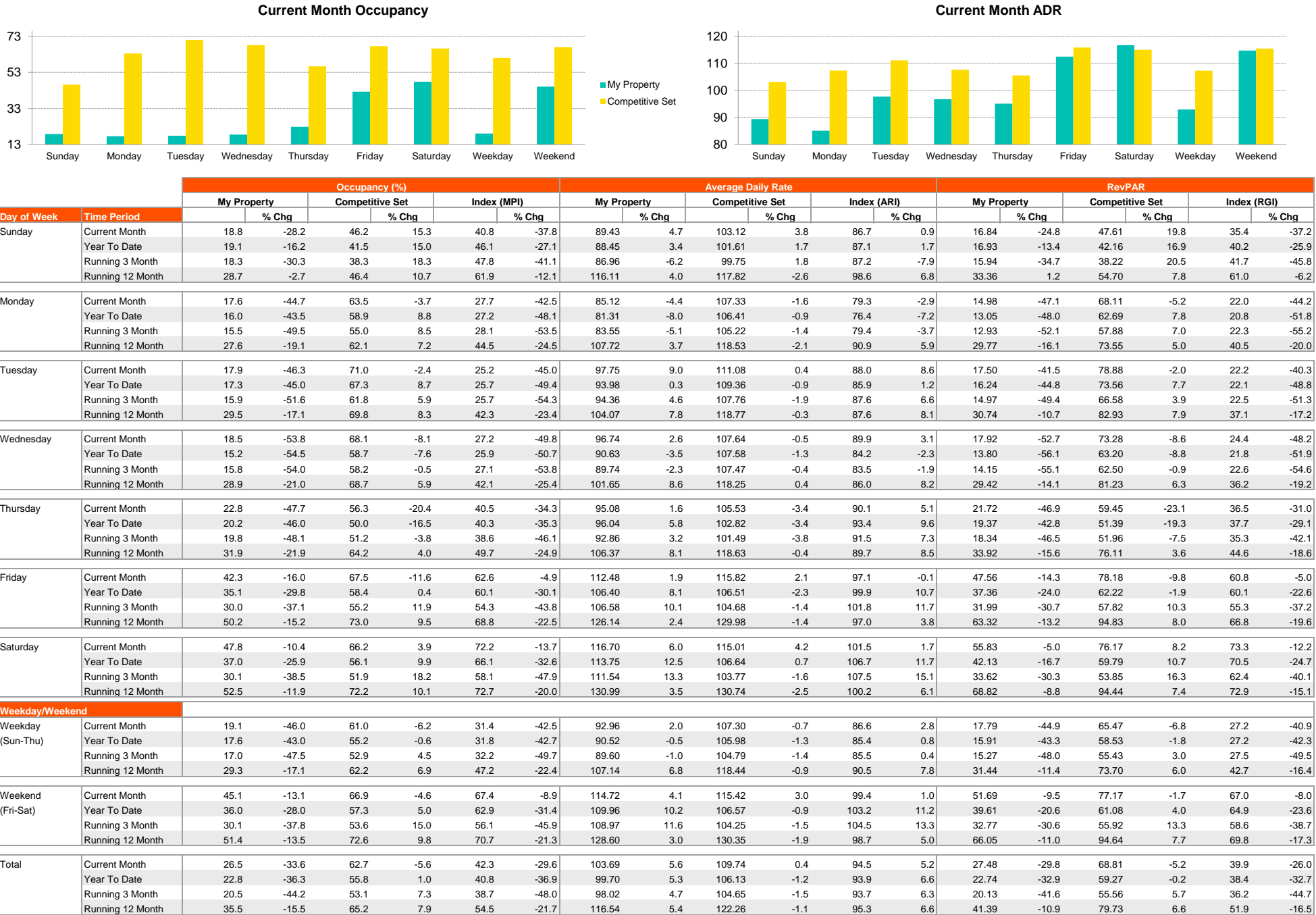
MgtCo: None

Owner: None

For the Month of: February 2025

Date Created: March 18, 2025

Monthly Competitive Set Data Excludes Subject Property

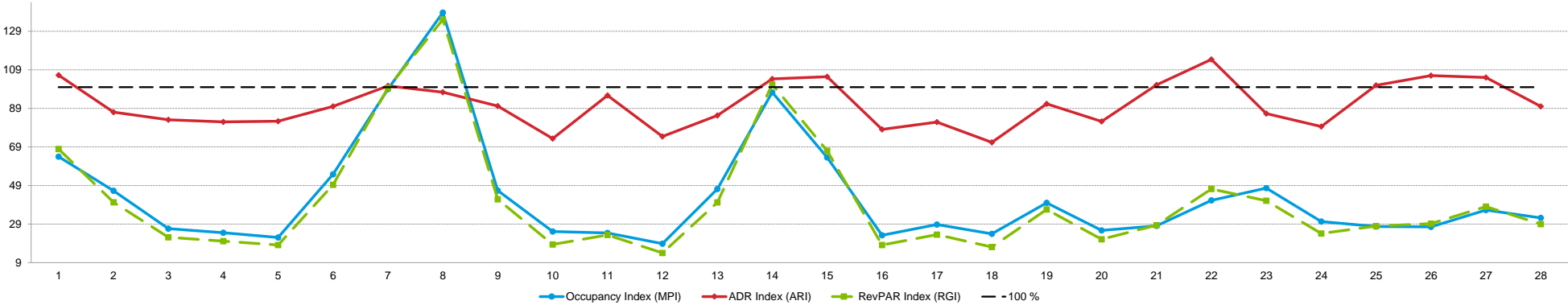


2025 © CoStar Group. This STR Report is a publication of STR, LLC and STR Global, Ltd., CoStar Group companies, and is intended solely for use by paid subscribers. The information in the STR Report is provided on an "as is" and "as available" basis and should not be construed as investment, tax, accounting or legal advice. Reproduction or distribution of this STR Report, in whole or part, without written permission is prohibited and subject to legal action. If you have received this report and are NOT a subscriber to this STR Report, please contact us immediately. Source: 2025 STR, LLC / STR Global, Ltd. trading as "STR".

Tab 7 - Daily Data for the Month

Wingate by Wyndham High Point 3901 Sedgebrook St High Point, NC 27265 Phone: (336) 812-8787
STR # 42232 ChainID: 46797 MgtCo: None Owner: None
For the Month of: February 2025 Date Created: March 18, 2025 Daily Competitive Set Data Excludes Subject Property

Daily Indexes for the Month of February



Occupancy (%)	February																											
	Sa	Su	Mo	Tu	We	Th	Fr	Sa	Su	Mo	Tu	We	Th	Fr	Sa	Su	Mo	Tu	We	Th	Fr	Sa	Su	Mo	Tu	We	Th	Fr
	1	2	3	4	5	6	7	8	9	10	11	12	13	14	15	16	17	18	19	20	21	22	23	24	25	26	27	28
My Property	33.3	18.5	16.0	17.3	14.8	29.6	61.7	80.2	17.3	16.0	17.3	12.3	24.7	65.4	39.5	11.1	19.8	16.0	27.2	14.8	22.2	38.3	28.4	18.5	21.0	19.8	22.2	19.8
Competitive Set	52.1	40.0	60.2	70.4	67.2	54.0	62.3	57.9	37.2	63.8	70.9	65.5	52.3	67.2	62.1	47.9	68.7	67.0	67.9	57.7	79.1	92.8	59.6	61.1	75.7	71.7	61.3	61.3
Index (MPI)	63.9	46.3	26.7	24.5	22.0	54.8	99.0	138.7	46.4	25.1	24.4	18.8	47.2	97.3	63.6	23.2	28.7	23.9	40.0	25.7	28.1	41.3	47.7	30.3	27.7	27.5	36.3	32.2
% Chg																												
My Property	-46.0	-46.4	-53.6	-39.1	-55.6	-27.3	19.0	47.7	-26.3	-40.9	-44.0	-71.4	-52.4	39.5	-22.0	-59.1	-36.0	-56.7	-45.0	-73.9	-43.7	-18.4	43.7	-46.4	-43.3	-42.9	-30.8	-55.6
Competitive Set	-24.4	9.9	-6.9	-3.2	-5.1	-2.3	-0.7	28.9	9.4	5.6	10.3	-8.6	-38.3	-28.0	-14.4	-5.5	-9.0	-15.8	-14.5	-22.8	0.5	35.0	52.2	-3.0	1.7	-4.0	-22.2	-35.7
Index (MPI)	-28.6	-51.3	-50.1	-37.1	-53.2	-25.6	19.9	14.6	-32.6	-44.1	-49.2	-68.7	-22.8	93.8	-8.9	-56.7	-29.7	-48.6	-35.7	-66.2	-44.1	-39.6	-5.5	-44.7	-44.3	-40.5	-11.1	-30.9

ADR	February																											
	1	2	3	4	5	6	7	8	9	10	11	12	13	14	15	16	17	18	19	20	21	22	23	24	25	26	27	28
My Property	105.78	87.73	88.64	91.26	91.24	94.07	108.10	107.97	89.38	80.64	106.16	81.17	85.88	113.49	108.72	76.29	86.01	81.22	97.24	92.52	133.02	152.74	95.72	85.01	108.82	109.92	108.37	99.73
Competitive Set	99.59	100.78	106.71	111.27	110.78	104.49	107.38	110.85	99.08	110.02	110.90	109.04	100.68	108.87	103.14	97.66	105.02	113.80	106.42	112.55	131.47	133.54	110.92	106.82	107.78	103.71	103.20	110.78
Index (ARI)	106.2	87.0	83.1	82.0	82.4	90.0	100.7	97.4	90.2	73.3	95.7	74.4	85.3	104.2	105.4	78.1	81.9	71.4	91.4	82.2	101.2	114.4	86.3	79.6	101.0	106.0	105.0	90.0
% Chg																												
My Property	-7.2	0.1	0.4	4.6	0.4	1.3	12.4	11.0	2.2	-12.9	9.0	-24.3	-14.3	-7.7	-7.9	-12.9	-3.5	-9.8	6.9	-5.0	15.8	35.4	23.9	-3.2	27.2	25.7	29.1	0.9
Competitive Set	-9.4	1.3	-1.4	1.7	5.4	0.3	6.9	9.9	-1.3	2.8	4.7	2.7	-9.3	-6.6	-3.3	-0.6	-3.8	-1.8	-4.4	2.6	8.9	10.2	11.6	-4.7	-2.2	-5.4	-9.3	-10.8
Index (ARI)	2.5	-1.1	1.8	2.8	-4.7	1.0	5.1	1.0	3.5	-15.3	4.0	-26.3	-5.5	-1.1	-4.8	-12.4	0.3	-8.1	11.8	-7.5	6.3	22.9	11.1	1.6	30.1	32.9	42.4	13.0

RevPAR	February																											
	1	2	3	4	5	6	7	8	9	10	11	12	13	14	15	16	17	18	19	20	21	22	23	24	25	26	27	28
My Property	35.26	16.25	14.23	15.77	13.52	27.87	66.73	86.64	15.45	12.94	18.35	10.02	21.21	74.26	42.95	8.48	16.99	13.03	26.41	13.71	29.56	58.46	27.18	15.74	22.84	21.71	24.08	19.70
Competitive Set	51.91	40.31	64.25	78.36	74.48	56.47	66.94	64.15	36.89	70.22	78.57	71.46	52.70	73.19	64.08	46.75	72.17	76.27	72.23	64.89	104.06	123.88	66.08	65.23	81.64	74.36	63.23	67.88
Index (RGI)	67.9	40.3	22.1	20.1	18.1	49.4	99.7	135.1	41.9	18.4	23.4	14.0	40.2	101.5	67.0	18.1	23.5	17.1	36.6	21.1	28.4	47.2	41.1	24.1	28.0	29.2	38.1	29.0
% Chg																												
My Property	-49.9	-46.4	-53.4	-36.3	-55.4	-26.3	33.8	64.0	-24.7	-48.5	-39.0	-78.4	-59.2	28.8	-28.1	-64.4	-38.2	-60.9	-41.2	-75.2	-34.9	10.5	78.1	-48.1	-27.9	-28.2	-10.7	-55.2
Competitive Set	-31.5	11.3	-8.2	-1.6	0.0	-2.0	6.2	41.7	8.0	8.6	15.5	-6.1	-44.1	-32.8	-17.2	-6.0	-12.4	-17.3	-18.2	-20.8	9.5	48.8	69.8	-7.6	-0.5	-9.2	-29.4	-42.6
Index (RGI)	-26.8	-51.8	-49.2	-35.3	-55.4	-24.8	26.0	15.7	-30.3	-52.6	-47.2	-77.0	-27.0	91.6	-13.2	-62.1	-29.5	-52.7	-28.1	-68.7	-40.5	-25.8	4.9	-43.9	-27.5	-20.9	26.6	-21.9

2025 © CoStar Group. This STR Report is a publication of STR, LLC and STR Global, Ltd. CoStar Group companies, and is intended solely for use by paid subscribers. The information in the STR Report is provided on an "as is" and "as available" basis and should not be construed as investment, tax, accounting or legal advice. Reproduction or distribution of this STR Report, in whole or part, without written permission is prohibited and subject to legal action. If you have received this report and are NOT a subscriber to this STR Report, please contact us immediately. Source: 2025 STR, LLC / STR Global, Ltd. trading as "STR".



How can we assist you?

Glossary:

For all STR definitions, please click here or visit www.str.com/data-insights/resources/glossary

Frequently Asked Questions (FAQ):

For all STR FAQs, please click here or visit www.str.com/data-insights/resources/FAQ

For additional support, please [contact](#) your regional office.

For the latest in industry news, visit HotelNewsNow.com.

To learn more about the Hotel Data Conference, visit HotelDataConference.com.