

STR # 42232 / Created January 18, 2023

# Monthly STAR Report : Wingate by Wyndham High Point

For the Month of: December 2022

Currency: US Dollar / Competitive Set Data Excludes Subject Property



Table Of Contents	1
Monthly Performance at a Glance	2
STAR Summary	3
Competitive Set Report	4
Response Report	5
Day of Week & Weekday/Weekend	6
Daily Data for the Month	7
Help	8

Corporate North American Headquarters  
T: +1 (615) 824 8664  
[support@str.com](mailto:support@str.com)   [www.str.com](http://www.str.com)

International Headquarters  
T: +44 (0) 207 922 1930  
[hotelinfo@str.com](mailto:hotelinfo@str.com)   [www.str.com](http://www.str.com)

2023 © CoStar Group. This STR Report is a publication of STR, LLC and STR Global, Ltd., CoStar Group companies, and is intended solely for use by paid subscribers. The information in the STR Report is provided on an "as is" and "as available" basis and should not be construed as investment, tax, accounting or legal advice. Reproduction or distribution of this STR Report, in whole or part, without written permission is prohibited and subject to legal action. If you have received this report and are NOT a subscriber to this STR Report, please contact us immediately. Source: 2023 STR, LLC / STR Global, Ltd. trading as "STR".

## Tab 2 - Monthly Performance at a Glance - My Property vs. Competitive Set

Wingate by Wyndham High Point    3901 Sedgebrook St    High Point, NC 27265    Phone: (336) 812-8787  
 STR # 42232    ChainID: 46797    MgtCo: None    Owner: None  
 For the Month of: December 2022    Date Created: January 18, 2023    Monthly Competitive Set Data Excludes Subject Property

### December 2022

	Occupancy (%)			ADR			RevPAR		
	My Prop	Comp Set	Index (MPI)	My Prop	Comp Set	Index (ARI)	My Prop	Comp Set	Index (RGI)
Current Month	24.2	51.1	47.3	96.00	93.69	102.5	23.21	47.86	48.5
Year To Date	35.9	60.8	59.0	113.80	116.83	97.4	40.83	71.07	57.5
Running 3 Month	35.9	57.6	62.4	120.47	124.04	97.1	43.29	71.47	60.6
Running 12 Month	35.9	60.8	59.0	113.80	116.83	97.4	40.83	71.07	57.5

### December 2022 vs. 2021 Percent Change (%)

	Occupancy			ADR			RevPAR		
	My Prop	Comp Set	Index (MPI)	My Prop	Comp Set	Index (ARI)	My Prop	Comp Set	Index (RGI)
Current Month	10.4	16.5	-5.3	-0.2	3.3	-3.3	10.2	20.3	-8.4
Year To Date	21.6	22.0	-0.3	3.5	16.9	-11.5	25.9	42.7	-11.8
Running 3 Month	15.2	11.8	3.1	5.5	11.4	-5.3	21.5	24.5	-2.4
Running 12 Month	21.6	22.0	-0.3	3.5	16.9	-11.5	25.9	42.7	-11.8

## Tab 3 - STAR Summary - My Property vs. Comp Set and Industry Segments

Wingate by Wyndham High Point 3901 Sedgebrook St High Point, NC 27265 Phone: (336) 812-8787

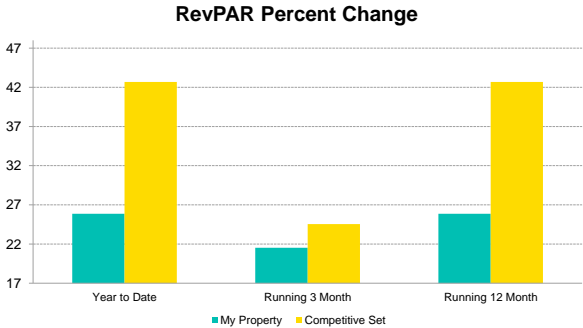
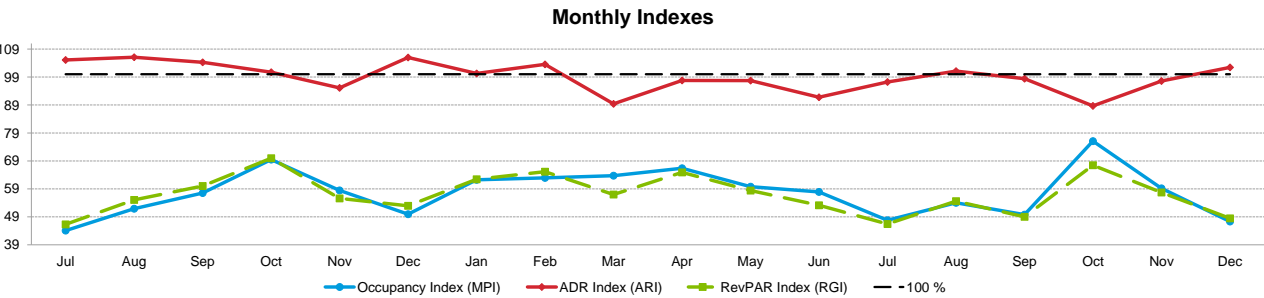
STR # 42232 ChainID: 46797 MgtCo: None Owner: None

For the Month of: December 2022 Date Created: January 18, 2023 Monthly Competitive Set Data Excludes Subject Property

		Occupancy (%)								Supply			
		Current Month	% Chg	Year to Date	% Chg	Running 3 Month	% Chg	Running 12 Month	% Chg	Month % Chg	YTD % Chg	Run 3 Mon % Chg	Run 12 Mon % Chg
Wingate by Wyndham High Point		24.2	10.4	35.9	21.6	35.9	15.2	35.9	21.6	0.0	0.0	0.0	0.0
Market: Greensboro/Winston Salem, NC		46.5	0.2	58.0	7.3	55.3	2.6	58.0	7.3	1.6	1.5	1.5	1.5
Market Class: Midscale Class		42.7	-3.9	54.9	0.6	51.1	-1.4	54.9	0.6	4.2	1.5	4.2	1.5
Submarket: Burlington/High Point, NC		49.7	3.7	60.4	8.1	57.7	4.8	60.4	8.1	0.2	0.1	0.2	0.1
Submarket Scale: Midscale Chains		51.6	1.2	64.2	7.3	61.1	2.0	64.2	7.3	5.4	0.5	2.2	0.5
Competitive Set: Competitors		51.1	16.5	60.8	22.0	57.6	11.8	60.8	22.0	0.0	0.0	0.0	0.0
		Average Daily Rate								Demand			
		Current Month	% Chg	Year to Date	% Chg	Running 3 Month	% Chg	Running 12 Month	% Chg	Month % Chg	YTD % Chg	Run 3 Mon % Chg	Run 12 Mon % Chg
Wingate by Wyndham High Point		96.00	-0.2	113.80	3.5	120.47	5.5	113.80	3.5	10.4	21.6	15.2	21.6
Market: Greensboro/Winston Salem, NC		94.71	7.0	108.42	18.3	115.14	13.4	108.42	18.3	1.7	9.0	4.1	9.0
Market Class: Midscale Class		73.84	10.6	80.80	17.7	87.13	15.7	80.80	17.7	0.2	2.2	2.8	2.2
Submarket: Burlington/High Point, NC		87.16	8.5	97.13	13.1	100.38	11.0	97.13	13.1	3.9	8.2	5.0	8.2
Submarket Scale: Midscale Chains		103.39	7.3	115.47	14.1	119.32	11.4	115.47	14.1	6.7	7.8	4.3	7.8
Competitive Set: Competitors		93.69	3.3	116.83	16.9	124.04	11.4	116.83	16.9	16.5	22.0	11.8	22.0
		RevPAR								Revenue			
		Current Month	% Chg	Year to Date	% Chg	Running 3 Month	% Chg	Running 12 Month	% Chg	Month % Chg	YTD % Chg	Run 3 Mon % Chg	Run 12 Mon % Chg
Wingate by Wyndham High Point		23.21	10.2	40.83	25.9	43.29	21.5	40.83	25.9	10.2	25.9	21.5	25.9
Market: Greensboro/Winston Salem, NC		44.05	7.2	62.93	27.0	63.72	16.3	62.93	27.0	8.8	28.9	18.1	28.9
Market Class: Midscale Class		31.53	6.3	44.40	18.5	44.50	14.1	44.40	18.5	10.8	20.3	19.0	20.3
Submarket: Burlington/High Point, NC		43.31	12.5	58.70	22.3	57.91	16.3	58.70	22.3	12.8	22.4	16.5	22.4
Submarket Scale: Midscale Chains		53.33	8.6	74.09	22.4	72.86	13.7	74.09	22.4	14.5	23.0	16.2	23.0
Competitive Set: Competitors		47.86	20.3	71.07	42.7	71.47	24.5	71.07	42.7	20.3	42.7	24.5	42.7
		Census/Sample - Properties & Rooms											
		Census		Sample		Sample %							
		Properties	Rooms	Properties	Rooms	Rooms							
Market: Greensboro/Winston Salem, NC		226	21538	175	18865	87.6							
Market Class: Midscale Class		31	2815	24	2353	83.6							
Submarket: Burlington/High Point, NC		91	5983	59	4618	77.2							
Submarket Scale: Midscale Chains		35	2828	34	2771	98.0							
Competitive Set: Competitors		5	470	5	470	100.0							

Tab 4 - Competitive Set Report

Wingate by Wyndham High Point 3901 Sedgebrook St High Point, NC 27265 Phone: (336) 812-8787  
STR # 42232 ChainID: 46797 MgtCo: None Owner: None  
For the Month of: December 2022 Date Created: January 18, 2023 Monthly Competitive Set Data Excludes Subject Property



Occupancy (%)	2021						2022											
	Jul	Aug	Sep	Oct	Nov	Dec	Jan	Feb	Mar	Apr	May	Jun	Jul	Aug	Sep	Oct	Nov	Dec
My Property	28.2	27.8	30.5	43.4	28.2	21.9	25.1	34.5	38.6	48.0	36.0	37.3	32.5	38.2	32.7	51.8	31.7	24.2
Competitive Set	63.9	53.5	53.0	62.5	48.2	43.8	40.4	54.8	60.6	72.3	60.3	64.5	68.0	70.6	65.6	68.1	53.5	51.1
Index (MPI)	44.1	51.9	57.5	69.5	58.5	50.0	62.2	62.9	63.7	66.4	59.8	57.9	47.8	54.0	49.8	76.1	59.2	47.3
Rank	6 of 6	6 of 6	6 of 6	6 of 6	6 of 6	6 of 6	5 of 6	6 of 6	6 of 6	6 of 6	6 of 6	6 of 6	6 of 6	6 of 6	6 of 6	6 of 6	6 of 6	6 of 6

% Chg		Jul	Aug	Sep	Oct	Nov	Dec	Jan	Feb	Mar	Apr	May	Jun	Jul	Aug	Sep	Oct	Nov	Dec
My Property		28.1	24.7	40.1	26.2	70.8	-18.4	46.7	43.5	35.5	49.8	13.3	-7.7	15.4	37.4	7.2	19.4	12.4	10.4
Competitive Set		97.7	72.0	44.4	75.0	94.3	109.0	52.4	26.3	45.3	51.5	13.8	6.4	6.5	32.1	23.8	9.0	11.1	16.5
Index (MPI)		-35.2	-27.5	-3.0	-27.9	-12.1	-61.0	-3.7	13.6	-6.8	-1.1	-0.4	-13.2	8.4	4.1	-13.5	9.5	1.2	-5.3
Rank		5 of 6	6 of 6	4 of 6	6 of 6	5 of 6	6 of 6	5 of 6	4 of 6	5 of 6	3 of 6	4 of 6	5 of 6	2 of 6	2 of 6	5 of 6	2 of 6	3 of 6	4 of 6

Year To Date			Running 3 Month			Running 12 Month		
2020	2021	2022	2020	2021	2022	2020	2021	2022
26.4	29.5	35.9	26.0	31.2	35.9	26.4	29.5	35.9
29.4	49.8	60.8	27.2	51.5	57.6	29.4	49.8	60.8
90.0	59.2	59.0	95.7	60.5	62.4	90.0	59.2	59.0
4 of 6	6 of 6	6 of 6	4 of 6	6 of 6	6 of 6	4 of 6	6 of 6	6 of 6

ADR	2021						2022											
	Jul	Aug	Sep	Oct	Nov	Dec	Jan	Feb	Mar	Apr	May	Jun	Jul	Aug	Sep	Oct	Nov	Dec
My Property	103.37	103.59	110.29	135.76	94.35	96.15	93.74	104.73	99.43	135.02	115.41	103.58	110.62	117.38	111.33	139.78	107.15	96.00
Competitive Set	98.37	97.66	105.76	134.80	99.22	90.72	93.47	101.16	111.24	138.12	118.13	112.87	113.77	116.09	113.10	157.63	109.80	93.69
Index (ARI)	105.1	106.1	104.3	100.7	95.1	106.0	100.3	103.5	89.4	97.8	97.7	91.8	97.2	101.1	98.4	88.7	97.6	102.5
Rank	4 of 6	3 of 6	3 of 6	3 of 6	4 of 6	4 of 6	4 of 6	4 of 6	5 of 6	4 of 6	4 of 6	5 of 6	4 of 6	3 of 6	4 of 6	4 of 6	4 of 6	4 of 6

% Chg		Jul	Aug	Sep	Oct	Nov	Dec	Jan	Feb	Mar	Apr	May	Jun	Jul	Aug	Sep	Oct	Nov	Dec
My Property		17.9	8.9	17.3	6.4	4.5	159.2	18.5	8.3	6.9	33.5	9.4	-32.2	7.0	13.3	0.9	3.0	13.6	-0.2
Competitive Set		32.8	29.1	37.0	48.5	36.7	23.7	28.4	19.4	29.3	61.6	24.1	-3.5	15.7	18.9	6.9	16.9	10.7	3.3
Index (ARI)		-11.3	-15.6	-14.4	-28.4	-23.6	109.5	-7.7	-9.3	-17.4	-17.4	-11.8	-29.8	-7.5	-4.7	-5.6	-12.0	2.6	-3.3
Rank		5 of 6	6 of 6	6 of 6	6 of 6	6 of 6	1 of 6	4 of 6	5 of 6	6 of 6	6 of 6	6 of 6	6 of 6	6 of 6	4 of 6	5 of 6	5 of 6	2 of 6	4 of 6

Year To Date			Running 3 Month			Running 12 Month		
2020	2021	2022	2020	2021	2022	2020	2021	2022
88.98	109.97	113.80	88.45	114.19	120.47	88.98	109.97	113.80
82.66	99.94	116.83	80.82	111.32	124.04	82.66	99.94	116.83
107.6	110.0	97.4	109.4	102.6	97.1	107.6	110.0	97.4
2 of 6	1 of 6	4 of 6	2 of 6	4 of 6	4 of 6	2 of 6	1 of 6	4 of 6

RevPAR	2021						2022											
	Jul	Aug	Sep	Oct	Nov	Dec	Jan	Feb	Mar	Apr	May	Jun	Jul	Aug	Sep	Oct	Nov	Dec
My Property	29.10	28.75	33.63	58.93	26.60	21.06	23.56	36.11	38.41	64.84	41.60	38.66	35.95	44.78	36.38	72.42	33.95	23.21
Competitive Set	62.83	52.21	56.04	84.23	47.84	39.78	37.73	55.43	67.43	99.90	71.19	72.75	77.40	81.97	74.21	107.34	58.80	47.86
Index (RGI)	46.3	55.1	60.0	70.0	55.6	52.9	62.4	65.1	57.0	64.9	58.4	53.1	46.4	54.6	49.0	67.5	57.7	48.5
Rank	6 of 6	6 of 6	6 of 6	4 of 6	5 of 6	5 of 6	5 of 6	6 of 6	6 of 6	6 of 6	6 of 6	6 of 6	6 of 6	6 of 6	6 of 6	5 of 6	6 of 6	6 of 6

% Chg		Jul	Aug	Sep	Oct	Nov	Dec	Jan	Feb	Mar	Apr	May	Jun	Jul	Aug	Sep	Oct	Nov	Dec
My Property		50.9	35.8	64.3	34.2	78.5	111.6	73.9	55.4	44.8	100.0	23.9	-37.5	23.5	55.7	8.2	22.9	27.6	10.2
Competitive Set		162.7	122.1	97.8	159.8	165.7	158.6	95.7	50.7	87.9	144.8	41.2	2.7	23.2	57.0	32.4	27.4	22.9	20.3
Index (RGI)		-42.5	-38.9	-17.0	-48.4	-32.8	-18.2	-11.1	3.1	-23.0	-18.3	-12.2	-39.1	0.3	-0.8	-18.3	-3.6	3.9	-8.4
Rank		6 of 6	6 of 6	5 of 6	6 of 6	6 of 6	6 of 6	5 of 6	5 of 6	6 of 6	5 of 6	5 of 6	6 of 6	2 of 6	2 of 6	4 of 6	4 of 6	3 of 6	4 of 6

Year To Date			Running 3 Month			Running 12 Month		
2020	2021	2022	2020	2021	2022	2020	2021	2022
23.52	32.44	40.83	23.01	35.63	43.29	23.52	32.44	40.83
24.28	49.81	71.07	21.98	57.38	71.47	24.28	49.81	71.07
96.8	65.1	57.5	104.7	62.1	60.6	96.8	65.1	57.5
3 of 6	5 of 6	6 of 6	3 of 6	5 of 6	6 of 6	3 of 6	5 of 6	6 of 6

% Chg		Jul	Aug	Sep	Oct	Nov	Dec	Jan	Feb	Mar	Apr	May	Jun	Jul	Aug	Sep	Oct	Nov	Dec
My Property		-56.5	38.0	25.9	-56.4	54.8	21.5	-56.5	38.0	25.9	-58.1	105.1	42.7	3.7	-32.7	-11.8	2.6	3.9	-8.4
Competitive Set		-58.1	105.1	42.7	-63.2	161.1	24.5	-58.1	105.1	42.7	-58.1	105.1	42.7	3.7	-32.7	-11.8	2.6	3.9	-8.4
Index (RGI)		-42.5	-38.9	-17.0	-48.4	-32.8	-18.2	-11.1	3.1	-23.0	-18.3	-12.2	-39.1	0.3	-0.8	-18.3	-3.6	3.9	-8.4
Rank		2 of 6	6 of 6	5 of 6	2 of 6	6 of 6	3 of 6	2 of 6	6 of 6	5 of 6	2 of 6	6 of 6	5 of 6	2 of 6	6 of 6	3 of 6	2 of 6	6 of 6	5 of 6

Tab 5 - Response Report

Wingate by Wyndham High Point    3901 Sedgebrook St    High Point, NC 27265    Phone: (336) 812-8787  
STR # 42232    ChainID: 46797    MgtCo: None    Owner: None  
For the Month of: December 2022    Date Created: January 18, 2023

**This Year**  
Dec 19th - First Day of Hanukkah  
Dec 24th - Christmas Eve  
Dec 25th - Christmas Day  
Dec 26th - First Day of Kwanzaa  
Dec 31st - New Year's Eve

December 2022 (This Year)

Sun	Mon	Tue	Wed	Thu	Fri	Sat
				1	2	3
4	5	6	7	8	9	10
11	12	13	14	15	16	17
18	19	20	21	22	23	24
25	26	27	28	29	30	31

December 2021 (Last Year)

Sun	Mon	Tue	Wed	Thu	Fri	Sat
			1	2	3	4
5	6	7	8	9	10	11
12	13	14	15	16	17	18
19	20	21	22	23	24	25
26	27	28	29	30	31	

**Last Year**  
Dec 24th - Christmas Eve  
Dec 25th - Christmas Day  
Dec 26th - First Day of Kwanzaa  
Dec 31st - New Year's Eve

STR#	Name	City, State	Zip	Phone	Rooms	Open Date
42232	Wingate by Wyndham High Point	High Point, NC	27265	(336) 812-8787	81	200010
32728	Hampton by Hilton Inn Greensboro-Airport	Greensboro, NC	27409	(336) 605-5500	125	199606
33651	Four Points by Sheraton Greensboro Airport	Greensboro, NC	27409	(336) 882-6666	112	199703
37600	Clarion Pointe Greensboro Airport	Greensboro, NC	27409	(336) 454-0333	60	199901
48038	Fairfield Inn Greensboro Airport	Greensboro, NC	27409	(336) 841-0140	78	200304
58872	Holiday Inn Express & Suites Greensboro Airport	Greensboro, NC	27409	(336) 882-0004	95	200906
					551	

2021												2022											
Jan	Feb	Mar	Apr	May	Jun	Jul	Aug	Sep	Oct	Nov	Dec	Jan	Feb	Mar	Apr	May	Jun	Jul	Aug	Sep	Oct	Nov	Dec
●	●	●	●	●	●	●	●	●	●	●	●	●	●	●	●	●	●	●	●	●	●	●	●
●	●	●	●	●	●	●	●	●	●	●	●	●	●	●	●	●	●	●	●	●	●	●	●
●	●	●	●	●	●	●	●	●	○	○	○	○	○	●	●	●	●	●	●	●	●	●	●
●	●	●	●	●	●	●	●	●	●	●	●	●	●	●	●	●	●	●	●	●	●	●	●
●	●	●	●	●	●	●	●	●	●	●	●	●	●	●	●	●	●	●	●	●	●	●	●
●	●	●	●	●	●	●	●	●	●	●	●	●	●	●	●	●	●	●	●	●	●	●	●
●	●	●	●	●	●	●	●	●	●	●	●	●	●	●	●	●	●	●	●	●	●	●	●

Data received:  
○ = Monthly Only  
● = Monthly & Daily

Tab 6 - Day of Week and Weekday/Weekend Report

Wingate by Wyndham High Point

3901 Sedgebrook St

High Point, NC 27265

Phone: (336) 812-8787

STR # 42232

ChainID: 46797

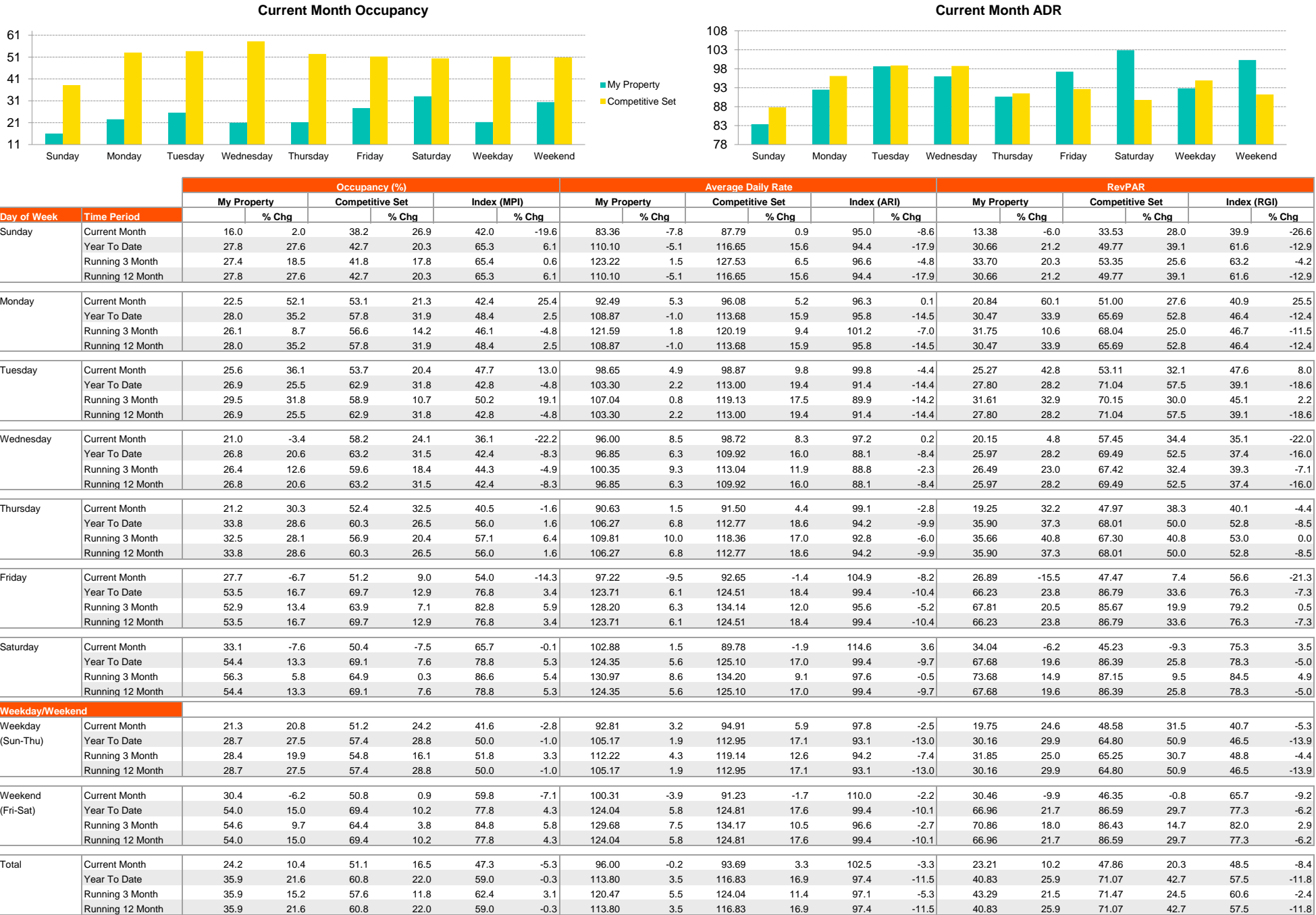
MgtCo: None

Owner: None

For the Month of: December 2022

Date Created: January 18, 2023

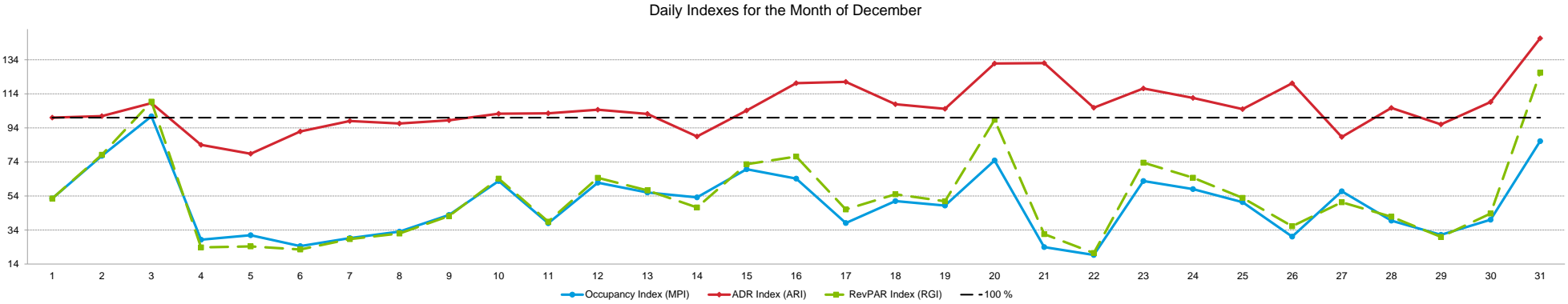
Monthly Competitive Set Data Excludes Subject Property



2023 © CoStar Group. This STR Report is a publication of STR, LLC and STR Global, Ltd., CoStar Group companies, and is intended solely for use by paid subscribers. The information in the STR Report is provided on an "as is" and "as available" basis and should not be construed as investment, tax, accounting or legal advice. Reproduction or distribution of this STR Report, in whole or part, without written permission is prohibited and subject to legal action. If you have received this report and are NOT a subscriber to this STR Report, please contact us immediately. Source: 2023 STR, LLC / STR Global, Ltd. trading as "STR".

Tab 7 - Daily Data for the Month

Wingate by Wyndham High Point    3901 Sedgebrook St    High Point, NC 27265    Phone: (336) 812-8787  
STR # 42232    ChainID: 46797    MgtCo: None    Owner: None  
For the Month of: December 2022    Date Created: January 18, 2023    Daily Competitive Set Data Excludes Subject Property



	Th	Fr	Sa	Su	Mo	Tu	We	Th	Fr	Sa	Su	Mo	Tu	We	Th	Fr	Sa	Su	Mo	Tu	We	Th	Fr	Sa	Su	Mo	Tu	We	Th	Fr	Sa
Occupancy (%)	December																														
	1	2	3	4	5	6	7	8	9	10	11	12	13	14	15	16	17	18	19	20	21	22	23	24	25	26	27	28	29	30	31
	My Property	25.9	35.8	45.7	9.9	21.0	18.5	24.7	24.7	34.6	40.7	17.3	38.3	34.6	30.9	34.6	29.6	21.0	16.0	18.5	29.6	9.9	7.4	25.9	25.9	21.0	13.6	22.2	19.8	16.0	17.3
Competitive Set	49.4	46.2	45.3	34.9	67.9	75.5	84.5	74.7	80.6	64.9	45.5	61.9	61.7	58.1	49.6	46.2	55.1	31.5	38.3	39.6	41.3	38.3	41.3	44.7	41.7	45.1	39.1	50.0	51.5	43.2	43.0
Index (MPI)	52.5	77.5	100.8	28.3	30.9	24.5	29.2	33.1	42.9	62.8	38.0	61.8	56.0	53.1	69.7	64.2	38.1	51.0	48.4	74.9	23.9	19.3	62.8	58.0	50.3	30.1	56.8	39.5	31.2	40.0	86.2

% Chg																															
My Property	23.5	7.4	76.2	-33.3	30.8	-34.8	11.1	81.8	-9.7	-15.4	40.0	3000.0	211.1	38.9	64.7	-11.1	-50.0	30.0	0.0	60.0	-60.0	-50.0	5.0	-4.5	-10.5	-42.1	28.6	-11.1	44.4	-6.7	87.5
Competitive Set	-21.8	-33.2	-29.2	-2.4	-1.6	-3.1	5.7	6.1	0.2	-14.9	0.6	3.1	-4.8	-5.5	5.0	2.0	-26.1	3.4	-1.4	15.2	43.5	78.1	42.1	33.3	62.3	42.9	47.5	94.6	122.1	-1.5	69.1
Index (MPI)	58.0	60.8	148.7	-31.7	32.9	-32.7	5.1	71.4	-9.9	-0.6	39.1	2906.9	226.8	46.9	56.8	-12.9	-32.3	25.7	1.4	38.9	-72.1	-71.9	-26.1	-28.4	-44.9	-59.5	-12.9	-54.3	-35.0	-5.2	10.9

ADR	December																														
	1	2	3	4	5	6	7	8	9	10	11	12	13	14	15	16	17	18	19	20	21	22	23	24	25	26	27	28	29	30	31
My Property	91.56	88.92	96.81	77.90	83.28	89.86	100.29	92.02	98.31	99.35	91.94	101.98	102.72	97.80	98.77	108.33	99.21	84.97	89.79	106.06	108.53	82.51	96.95	96.12	87.41	98.80	96.25	91.21	82.24	95.65	124.96
Competitive Set	91.55	88.13	89.19	92.73	105.71	97.78	102.29	95.30	99.89	97.13	89.68	97.46	100.49	109.98	94.82	90.09	81.98	78.74	85.36	80.44	82.19	77.96	82.74	86.16	83.21	82.18	108.60	86.28	85.61	87.61	85.24
Index (ARI)	100.0	100.9	108.5	84.0	78.8	91.9	98.0	96.6	98.4	102.3	102.5	104.6	102.2	88.9	104.2	120.2	121.0	107.9	105.2	131.8	132.1	105.8	117.2	111.6	105.0	120.2	88.6	105.7	96.1	109.2	146.6

% Chg																															
My Property	-14.8	-14.8	-7.7	-13.6	-4.1	-9.2	11.4	6.9	1.0	0.9	-7.4	15.5	1.4	37.7	15.0	8.2	-5.3	-4.2	1.1	23.3	18.8	-7.1	-8.4	-1.7	0.8	12.6	7.2	4.5	24.4	-35.7	31.6
Competitive Set	-0.6	-13.9	-4.9	-0.3	0.4	-0.1	2.8	-1.0	4.0	2.3	-0.8	5.1	6.3	15.2	18.8	0.2	-13.4	-8.7	3.9	1.6	5.4	-7.7	-6.8	-3.1	-2.0	-1.4	26.1	3.1	-3.8	-11.3	-8.6
Index (ARI)	-14.3	-1.0	-2.9	-13.4	-4.4	-9.0	8.3	7.9	-2.8	-1.3	-6.7	9.9	-4.7	19.6	-3.2	8.0	9.4	5.0	-2.7	21.3	12.7	0.6	-1.7	1.4	2.8	14.1	-15.0	1.3	29.4	-27.5	44.0

RevPAR	December																															
	1	2	3	4	5	6	7	8	9	10	11	12	13	14	15	16	17	18	19	20	21	22	23	24	25	26	27	28	29	30	31	
	My Property	23.74	31.84	44.22	7.69	17.48	16.64	24.76	22.72	33.98	40.48	15.89	39.03	35.51	30.18	34.14	32.10	20.82	13.64	16.63	31.42	10.72	6.11	25.13	24.92	18.34	13.42	21.39	18.02	13.20	16.53	46.28
	Competitive Set	45.19	40.69	40.42	32.36	71.75	73.85	86.40	71.17	80.55	63.03	40.83	60.34	62.00	63.88	47.00	41.59	45.18	24.80	32.69	31.83	33.92	29.86	34.15	38.50	34.70	37.07	42.51	43.14	44.08	37.84	36.63
	Index (RGI)	52.5	78.2	109.4	23.8	24.4	22.5	28.7	31.9	42.2	64.2	38.9	64.7	57.3	47.3	72.6	77.2	46.1	55.0	50.9	98.7	31.6	20.5	73.6	64.7	52.9	36.2	50.3	41.8	29.9	43.7	126.3

% Chg																															
My Property	5.3	-8.5	62.7	-42.4	25.4	-40.8	23.8	94.3	-8.8	-14.6	29.7	3480.5	215.3	91.3	89.4	-3.9	-52.6	24.6	1.1	97.2	-52.5	-53.6	-3.8	-6.2	-9.8	-34.8	37.9	-7.1	79.7	-40.0	146.8
Competitive Set	-22.3	-42.5	-32.6	-2.7	-1.2	-3.2	8.7	5.1	4.2	-12.9	-0.2	8.3	1.3	8.8	24.8	2.2	-36.0	-5.6	2.5	17.0	51.2	64.3	32.4	29.2	59.1	40.9	86.0	100.6	113.5	-12.6	54.6
Index (RGI)	35.4	59.1	141.4	-40.8	27.0	-38.8	13.8	84.9	-12.5	-1.9	29.9	3204.9	211.4	75.7	51.8	-5.9	-26.0	32.0	-1.4	68.5	-68.6	-71.7	-27.3	-27.4	-43.3	-53.8	-25.9	-53.7	-15.9	-31.3	59.7

2023 © CoStar Group. This STR Report is a publication of STR, LLC and STR Global, Ltd., CoStar Group companies, and is intended solely for use by paid subscribers. The information in the STR Report is provided on an "as is" and "as available" basis and should not be construed as investment, tax, accounting or legal advice. Reproduction or distribution of this STR Report, in whole or part, without written permission is prohibited and subject to legal action. If you have received this report and are NOT a subscriber to this STR Report, please contact us immediately. Source: 2023 STR, LLC / STR Global, Ltd. trading as "STR".



## How can we assist you?

**Glossary:**

For all STR definitions, please click here or visit [www.str.com/data-insights/resources/glossary](http://www.str.com/data-insights/resources/glossary)

**Frequently Asked Questions (FAQ):**

For all STR FAQs, please click here or visit [www.str.com/data-insights/resources/FAQ](http://www.str.com/data-insights/resources/FAQ)

For additional support, please [contact](#) your regional office.

For the latest in industry news, visit [HotelNewsNow.com](http://HotelNewsNow.com).

To learn more about the Hotel Data Conference, visit [HotelDataConference.com](http://HotelDataConference.com).