

STR # 42232 / Created February 19, 2025

Monthly STAR Report : Wingate by Wyndham High Point

For the Month of: January 2025

Currency: US Dollar / Competitive Set Data Excludes Subject Property



Table Of Contents	1
Monthly Performance at a Glance	2
STAR Summary	3
Competitive Set Report	4
Response Report	5
Day of Week & Weekday/Weekend	6
Daily Data for the Month	7
Help	8

Corporate North American Headquarters
T: +1 (615) 824 8664
support@str.com www.str.com

International Headquarters
T: +44 (0) 207 922 1930
hotelinfo@str.com www.str.com

2025 © CoStar Group. This STR Report is a publication of STR, LLC and STR Global, Ltd., CoStar Group companies, and is intended solely for use by paid subscribers. The information in the STR Report is provided on an "as is" and "as available" basis and should not be construed as investment, tax, accounting or legal advice. Reproduction or distribution of this STR Report, in whole or part, without written permission is prohibited and subject to legal action. If you have received this report and are NOT a subscriber to this STR Report, please contact us immediately. Source: 2025 STR, LLC / STR Global, Ltd. trading as "STR".

Tab 2 - Monthly Performance at a Glance - My Property vs. Competitive Set

Wingate by Wyndham High Point 3901 Sedgebrook St High Point, NC 27265 Phone: (336) 812-8787
STR # 42232 ChainID: 46797 MgtCo: None Owner: None
For the Month of: January 2025 Date Created: February 19, 2025 Monthly Competitive Set Data Excludes Subject Property

January 2025									
	Occupancy (%)			ADR			RevPAR		
	My Prop	Comp Set	Index (MPI)	My Prop	Comp Set	Index (ARI)	My Prop	Comp Set	Index (RGI)
Current Month	19.5	49.6	39.2	94.79	102.02	92.9	18.46	50.65	36.4
Year To Date	19.5	49.6	39.2	94.79	102.02	92.9	18.46	50.65	36.4
Running 3 Month	21.4	53.3	40.2	100.83	105.69	95.4	21.59	56.29	38.4
Running 12 Month	36.6	65.5	55.8	115.67	122.17	94.7	42.28	80.01	52.8

January 2025 vs. 2024 Percent Change (%)									
	Occupancy			ADR			RevPAR		
	My Prop	Comp Set	Index (MPI)	My Prop	Comp Set	Index (ARI)	My Prop	Comp Set	Index (RGI)
Current Month	-39.0	9.8	-44.5	4.6	-2.9	7.7	-36.2	6.6	-40.2
Year To Date	-39.0	9.8	-44.5	4.6	-2.9	7.7	-36.2	6.6	-40.2
Running 3 Month	-46.1	13.2	-52.4	6.5	-5.0	12.1	-42.6	7.6	-46.7
Running 12 Month	-11.9	9.2	-19.3	3.5	-1.2	4.8	-8.9	7.9	-15.5

2025 © CoStar Group. This STR Report is a publication of STR, LLC and STR Global, Ltd., CoStar Group companies, and is intended solely for use by paid subscribers. The information in the STR Report is provided on an “as is” and “as available” basis and should not be construed as investment, tax, accounting or legal advice. Reproduction or distribution of this STR Report, in whole or part, without written permission is prohibited and subject to legal action. If you have received this report and are NOT a subscriber to this STR Report, please contact us immediately. Source: 2025 STR, LLC / STR Global, Ltd. trading as “STR”.

Tab 3 - STAR Summary - My Property vs. Comp Set and Industry Segments

Wingate by Wyndham High Point 3901 Sedgebrook St High Point, NC 27265 Phone: (336) 812-8787

STR # 42232 ChainID: 46797 MgtCo: None Owner: None

For the Month of: January 2025 Date Created: February 19, 2025 Monthly Competitive Set Data Excludes Subject Property

Wingate by Wyndham High Point
Market: Greensboro/Winston Salem, NC
Market Class: Midscale Class
Submarket: Burlington/High Point, NC
Submarket Scale: Midscale Chains
Competitive Set: Competitors

Occupancy (%)							
Current Month	% Chg	Year to Date	% Chg	Running 3 Month	% Chg	Running 12 Month	% Chg
19.5	-39.0	19.5	-39.0	21.4	-46.1	36.6	-11.9
50.1	6.3	50.1	6.3	51.5	3.7	60.0	2.9
43.0	-0.7	43.0	-0.7	45.4	-5.4	55.6	-0.3
47.6	-0.2	47.6	-0.2	49.7	-2.8	58.8	-0.1
47.7	2.7	47.7	2.7	51.3	1.1	62.6	2.3
49.6	9.8	49.6	9.8	53.3	13.2	65.5	9.2

Supply			
Month % Chg	YTD % Chg	Run 3 Mon % Chg	Run 12 Mon % Chg
0.0	0.0	0.0	0.3
2.0	2.0	1.9	1.3
3.0	3.0	2.0	-0.9
0.3	0.3	0.3	1.1
1.6	1.6	0.5	2.4
0.0	0.0	0.0	0.0

Wingate by Wyndham High Point
Market: Greensboro/Winston Salem, NC
Market Class: Midscale Class
Submarket: Burlington/High Point, NC
Submarket Scale: Midscale Chains
Competitive Set: Competitors

Average Daily Rate							
Current Month	% Chg	Year to Date	% Chg	Running 3 Month	% Chg	Running 12 Month	% Chg
94.79	4.6	94.79	4.6	100.83	6.5	115.67	3.5
99.27	2.5	99.27	2.5	102.14	0.6	114.48	1.3
72.44	0.6	72.44	0.6	76.93	1.3	86.80	2.0
91.29	3.9	91.29	3.9	94.85	3.7	105.41	3.8
109.77	4.4	109.77	4.4	114.15	4.6	126.08	4.0
102.02	-2.9	102.02	-2.9	105.69	-5.0	122.17	-1.2

Demand			
Month % Chg	YTD % Chg	Run 3 Mon % Chg	Run 12 Mon % Chg
-39.0	-39.0	-46.1	-11.7
8.4	8.4	5.7	4.3
2.3	2.3	-3.5	-1.2
0.2	0.2	-2.5	1.0
4.3	4.3	1.7	4.7
9.8	9.8	13.2	9.2

Wingate by Wyndham High Point
Market: Greensboro/Winston Salem, NC
Market Class: Midscale Class
Submarket: Burlington/High Point, NC
Submarket Scale: Midscale Chains
Competitive Set: Competitors

RevPAR							
Current Month	% Chg	Year to Date	% Chg	Running 3 Month	% Chg	Running 12 Month	% Chg
18.46	-36.2	18.46	-36.2	21.59	-42.6	42.28	-8.9
49.71	8.9	49.71	8.9	52.56	4.4	68.68	4.3
31.16	-0.1	31.16	-0.1	34.89	-4.2	48.27	1.7
43.41	3.7	43.41	3.7	47.18	0.8	62.01	3.7
52.41	7.2	52.41	7.2	58.60	5.8	78.97	6.4
50.65	6.6	50.65	6.6	56.29	7.6	80.01	7.9

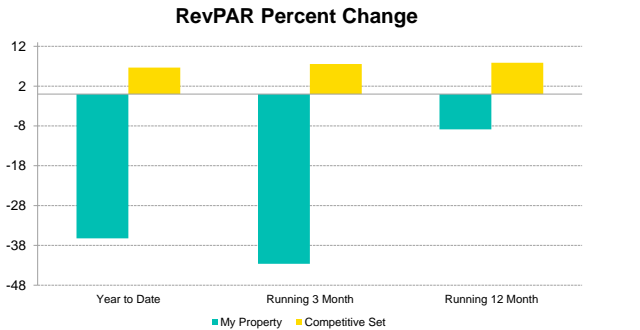
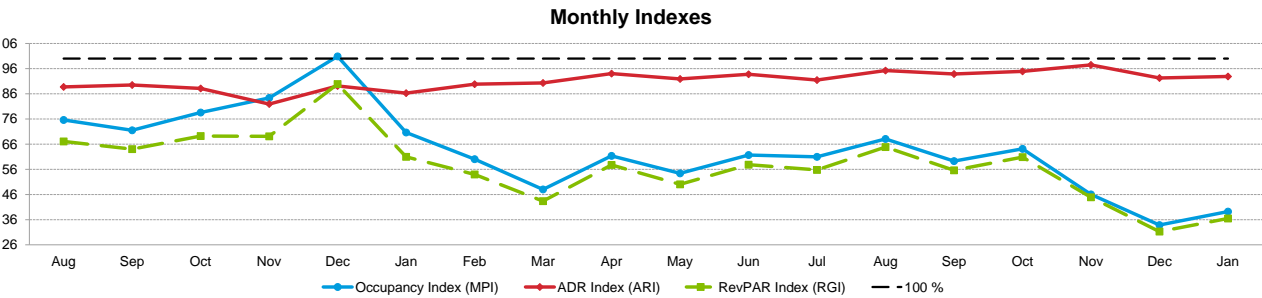
Revenue			
Month % Chg	YTD % Chg	Run 3 Mon % Chg	Run 12 Mon % Chg
-36.2	-36.2	-42.6	-8.6
11.1	11.1	6.4	5.7
2.9	2.9	-2.3	0.8
4.1	4.1	1.1	4.9
8.9	8.9	6.3	8.9
6.6	6.6	7.6	7.9

Market: Greensboro/Winston Salem, NC
Market Class: Midscale Class
Submarket: Burlington/High Point, NC
Submarket Scale: Midscale Chains
Competitive Set: Competitors

Census/Sample - Properties & Rooms					
Census		Sample		Sample %	
Properties	Rooms	Properties	Rooms	Rooms	
230	21897	176	18907	86.3	
34	3022	27	2560	84.7	
92	6090	61	4782	78.5	
36	2825	36	2825	100.0	
5	470	5	470	100.0	

Tab 4 - Competitive Set Report

Wingate by Wyndham High Point 3901 Sedgebrook St High Point, NC 27265 Phone: (336) 812-8787
STR # 42232 ChainID: 46797 MgtCo: None Owner: None
For the Month of: January 2025 Date Created: February 19, 2025 Monthly Competitive Set Data Excludes Subject Property



Occupancy (%)	2023					2024												2025
	Aug	Sep	Oct	Nov	Dec	Jan	Feb	Mar	Apr	May	Jun	Jul	Aug	Sep	Oct	Nov	Dec	Jan
My Property	47.9	44.4	52.8	48.8	38.7	31.9	39.9	34.8	48.8	33.8	42.8	41.8	45.6	37.8	49.5	28.8	16.2	19.5
Competitive Set	63.3	62.2	67.2	57.9	38.4	45.2	66.4	72.4	79.5	62.1	69.4	68.5	67.0	63.8	77.2	62.6	47.9	49.6
Index (MPI)	75.6	71.5	78.6	84.4	100.9	70.6	60.0	48.0	61.4	54.4	61.7	61.0	68.1	59.3	64.1	46.0	33.9	39.2
Rank	6 of 6	6 of 6	6 of 6	5 of 6	4 of 6	5 of 6	6 of 6	6 of 6	6 of 6	6 of 6	6 of 6	6 of 6	6 of 6	6 of 6	6 of 6	6 of 6	6 of 6	6 of 6

Year To Date			Running 3 Month			Running 12 Month		
2023	2024	2025	2023	2024	2025	2023	2024	2025
36.0	31.9	19.5	30.8	39.7	21.4	36.9	41.5	36.6
48.8	45.2	49.6	51.1	47.1	53.3	61.5	60.0	65.5
73.8	70.6	39.2	60.3	84.5	40.2	59.9	69.2	55.8
6 of 6	5 of 6	6 of 6	6 of 6	5 of 6	6 of 6	6 of 6	6 of 6	6 of 6

% Chg																		
My Property	25.5	36.0	1.8	54.2	56.7	-11.3	21.4	-4.6	14.4	-8.2	-7.6	10.1	-4.7	-14.9	-6.2	-41.0	-58.2	-39.0
Competitive Set	-10.3	-5.3	-1.4	8.1	-24.8	-7.3	10.3	10.5	12.0	6.2	5.8	4.9	5.9	2.7	14.9	8.1	24.6	9.8
Index (MPI)	39.9	43.6	3.2	42.6	108.4	-4.3	10.1	-13.7	2.1	-13.5	-12.6	5.0	-10.0	-17.1	-18.4	-45.4	-66.4	-44.5
Rank	1 of 6	1 of 6	3 of 6	2 of 6	1 of 6	3 of 6	3 of 6	4 of 6	2 of 6	5 of 6	5 of 6	2 of 6	5 of 6	6 of 6	6 of 6	6 of 6	6 of 6	6 of 6

Year To Date			Running 3 Month			Running 12 Month		
2023	2024	2025	2023	2024	2025	2023	2024	2025
43.3	-11.3	-39.0	23.0	29.1	-46.1	22.1	12.6	-11.9
20.8	-7.3	9.8	15.9	-7.9	13.2	20.6	-2.5	9.2
18.6	-4.3	-44.5	6.1	40.2	-52.4	1.2	15.5	-19.3
4 of 6	3 of 6	6 of 6	3 of 6	2 of 6	6 of 6	3 of 6	1 of 6	6 of 6

ADR	2023					2024												2025
	Aug	Sep	Oct	Nov	Dec	Jan	Feb	Mar	Apr	May	Jun	Jul	Aug	Sep	Oct	Nov	Dec	Jan
My Property	99.66	104.68	140.72	99.84	91.72	90.63	98.16	101.89	148.24	109.97	109.93	111.02	111.42	106.09	150.12	109.29	93.53	94.79
Competitive Set	112.30	116.93	159.70	121.86	102.95	105.04	109.26	112.85	157.62	119.69	117.25	121.35	116.99	113.04	158.14	112.12	101.35	102.02
Index (ARI)	88.7	89.5	88.1	81.9	89.1	86.3	89.8	90.3	94.1	91.9	93.8	91.5	95.2	93.9	94.9	97.5	92.3	92.9
Rank	5 of 6	5 of 6	4 of 6	5 of 6	5 of 6	5 of 6	5 of 6	5 of 6	5 of 6	5 of 6	5 of 6	4 of 6	4 of 6	4 of 6	4 of 6	4 of 6	5 of 6	4 of 6

Year To Date			Running 3 Month			Running 12 Month		
2023	2024	2025	2023	2024	2025	2023	2024	2025
57.13	90.63	94.79	84.81	94.68	100.83	110.32	111.79	115.67
94.46	105.04	102.02	99.44	111.22	105.69	116.63	123.68	122.17
60.5	86.3	92.9	85.3	85.1	95.4	94.6	90.4	94.7
6 of 6	5 of 6	4 of 6	5 of 6	5 of 6	4 of 6	4 of 6	5 of 6	4 of 6

% Chg																		
My Property	-15.1	-6.0	0.7	-6.8	-5.8	58.6	-14.6	-10.6	-2.8	-3.5	-0.4	12.4	11.8	1.3	6.7	9.5	2.0	4.6
Competitive Set	-3.3	3.4	1.3	11.0	9.9	11.2	1.2	-10.5	-3.3	2.4	-1.8	10.1	4.2	-3.3	-1.0	-8.0	-1.6	-2.9
Index (ARI)	-12.2	-9.1	-0.6	-16.0	-14.3	42.6	-15.6	-0.1	0.5	-5.8	1.4	2.1	7.3	4.8	7.7	19.0	3.6	7.7
Rank	6 of 6	6 of 6	3 of 6	6 of 6	6 of 6	1 of 6	6 of 6	3 of 6	3 of 6	6 of 6	3 of 6	4 of 6	3 of 6	2 of 6	2 of 6	1 of 6	2 of 6	1 of 6

Year To Date			Running 3 Month			Running 12 Month		
2023	2024	2025	2023	2024	2025	2023	2024	2025
-39.0	58.6	4.6	-10.4	11.6	6.5	0.0	1.3	3.5
1.1	11.2	-2.9	5.1	11.8	-5.0	15.8	6.1	-1.2
-39.7	42.6	7.7	-14.8	-0.2	12.1	-13.7	-4.4	4.8
6 of 6	1 of 6	1 of 6	6 of 6	3 of 6	1 of 6	6 of 6	6 of 6	2 of 6

RevPAR	2023					2024												2025
	Aug	Sep	Oct	Nov	Dec	Jan	Feb	Mar	Apr	May	Jun	Jul	Aug	Sep	Oct	Nov	Dec	Jan
My Property	47.71	46.52	74.25	48.77	35.54	28.95	39.15	35.43	72.35	37.14	47.05	46.38	50.85	40.12	74.31	31.48	15.16	18.46
Competitive Set	71.09	72.69	107.26	70.55	39.54	47.49	72.58	81.69	125.37	74.27	81.35	83.17	78.41	72.14	122.09	70.17	48.51	50.65
Index (RGI)	67.1	64.0	69.2	69.1	89.9	61.0	53.9	43.4	57.7	50.0	57.8	55.8	64.8	55.6	60.9	44.9	31.3	36.4
Rank	6 of 6	6 of 6	5 of 6	6 of 6	5 of 6	6 of 6	6 of 6	6 of 6	6 of 6	6 of 6	6 of 6	6 of 6	6 of 6	6 of 6	6 of 6	6 of 6	6 of 6	6 of 6

Year To Date			Running 3 Month			Running 12 Month		
2023	2024	2025	2023	2024	2025	2023	2024	2025
20.57	28.95	18.46	26.12	37.63	21.59	40.65	46.39	42.28
46.07	47.49	50.65	50.82	52.33	56.29	71.78	74.18	80.01
44.6	61.0	36.4	51.4	71.9	38.4	56.6	62.5	52.8
6 of 6	6 of 6	6 of 6	6 of 6	5 of 6	6 of 6	6 of 6	6 of 6	6 of 6

% Chg																		
My Property	6.5	27.9	2.5	43.6	47.5	40.7	3.7	-14.7	11.2	-11.5	-7.9	23.7	6.6	-13.8	0.1	-35.4	-57.3	-36.2
Competitive Set	-13.3	-2.0	-0.1	20.0	-17.4	3.1	11.6	-1.1	8.3	8.8	4.0	15.4	10.3	-0.8	13.8	-0.5	22.7	6.6
Index (RGI)	22.8	30.6	2.6	19.0	78.6	36.5	-7.1	-13.7	2.6	-18.6	-11.4	7.2	-3.4	-13.1	-12.1	-35.1	-65.2	-40.2
Rank	2 of 6	1 of 6	3 of 6	3 of 6	2 of 6	2 of 6	4 of 6	5 of 6	2 of 6	5 of 6	5 of 6	3 of 6	4 of 6	6 of 6	5 of 6	6 of 6	6 of 6	6 of 6

Year To Date			Running 3 Month			Running 12 Month		
2023	2024	2025	2023	2024	2025	2023	2024	2025
-12.7	40.7	-36.2	10.2	44.1	-42.6	22.1	14.1	-8.9
22.1	3.1	6.6	21.8	3.0	7.6	39.7	3.4	7.9
-28.5	36.5	-40.2	-9.6	39.9	-46.7	-12.6	10.4	-15.5
5 of 6	2 of 6	6 of 6	4 of 6	2 of 6	6 of 6	4 of 6	1 of 6	6 of 6

Tab 5 - Response Report

Wingate by Wyndham High Point 3901 Sedgebrook St High Point, NC 27265 Phone: (336) 812-8787
STR # 42232 ChainID: 46797 MgtCo: None Owner: None
For the Month of: January 2025 Date Created: February 19, 2025

This Year
Jan 1st - New Year's Day
Jan 20th - Martin Luther King Day

January 2025 (This Year)

Sun	Mon	Tue	Wed	Thu	Fri	Sat
			1	2	3	4
5	6	7	8	9	10	11
12	13	14	15	16	17	18
19	20	21	22	23	24	25
26	27	28	29	30	31	

January 2024 (Last Year)

Sun	Mon	Tue	Wed	Thu	Fri	Sat
	1	2	3	4	5	6
7	8	9	10	11	12	13
14	15	16	17	18	19	20
21	22	23	24	25	26	27
28	29	30	31			

Last Year
Jan 1st - New Year's Day
Jan 15th - Martin Luther King Day

STR#	Name	City, State	Zip	Phone	Rooms	Open Date
42232	Wingate by Wyndham High Point	High Point, NC	27265	(336) 812-8787	81	200010
32728	Hampton Inn Greensboro-Airport	Greensboro, NC	27409	(336) 605-5500	125	199606
33651	Four Points by Sheraton Greensboro Airport	Greensboro, NC	27409	(336) 882-6666	112	199703
37600	Clarion Pointe Greensboro Airport	Greensboro, NC	27409	(336) 454-0333	60	199901
48038	Fairfield Inn Greensboro Airport	Greensboro, NC	27409	(336) 841-0140	78	200304
58872	Holiday Inn Express & Suites Greensboro - Airport	Greensboro, NC	27409-9400	(336) 882-0004	95	200906
					551	

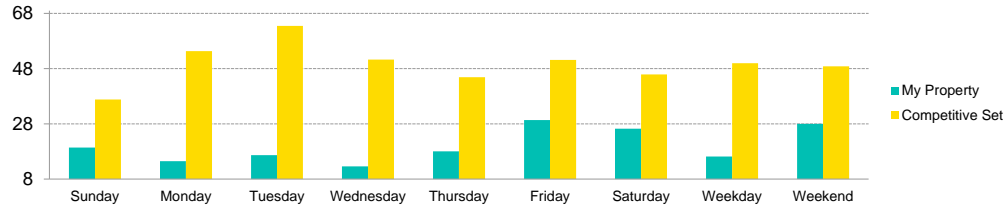
2023												2024											
Feb	Mar	Apr	May	Jun	Jul	Aug	Sep	Oct	Nov	Dec	Jan	Feb	Mar	Apr	May	Jun	Jul	Aug	Sep	Oct	Nov	Dec	Jan
●	●	●	●	●	●	●	●	●	●	●	●	●	●	●	●	●	●	●	●	●	●	●	●
●	●	●	●	●	●	●	●	●	●	●	●	●	●	●	●	●	●	●	●	●	●	●	●
●	●	●	●	●	●	●	●	●	○	●	●	●	●	●	●	●	●	●	●	●	●	●	●
●	●	●	●	●	●	●	●	●	●	●	●	●	●	●	●	●	●	●	●	●	●	●	●
●	●	●	●	●	●	●	●	●	●	●	●	●	●	●	●	●	●	●	●	●	●	●	●
●	●	●	●	●	●	●	●	●	●	●	●	●	●	●	●	●	●	●	●	●	●	●	●
●	●	●	●	●	●	●	●	●	●	●	●	●	●	●	●	●	●	●	●	●	●	●	●

Data received:
○ = Monthly Only
● = Monthly & Daily

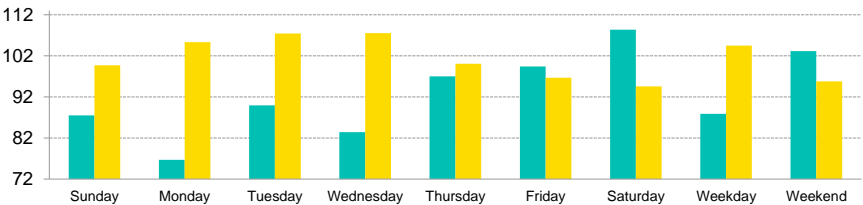
Tab 6 - Day of Week and Weekday/Weekend Report

Wingate by Wyndham High Point 3901 Sedgebrook St High Point, NC 27265 Phone: (336) 812-8787
STR # 42232 ChainID: 46797 MgtCo: None Owner: None
For the Month of: January 2025 Date Created: February 19, 2025 Monthly Competitive Set Data Excludes Subject Property

Current Month Occupancy



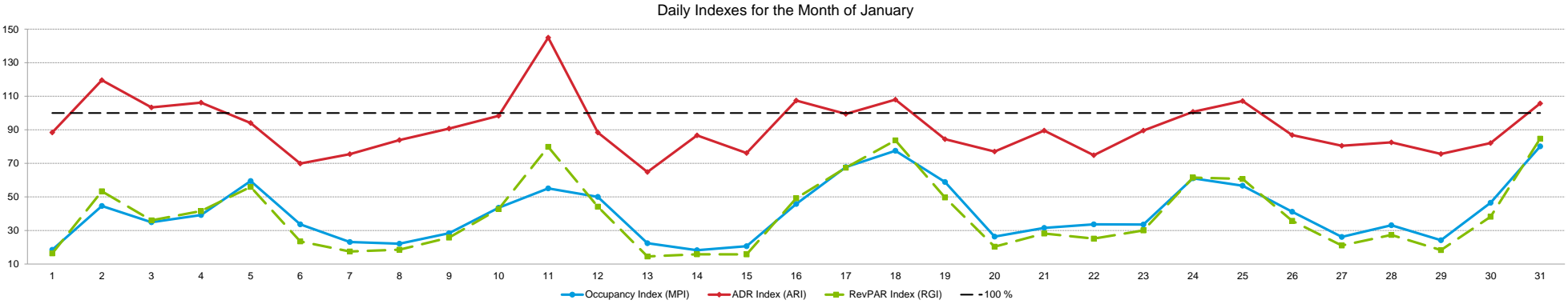
Current Month ADR



		Occupancy (%)						Average Daily Rate						RevPAR					
		My Property		Competitive Set		Index (MPI)		My Property		Competitive Set		Index (ARI)		My Property		Competitive Set		Index (RGI)	
Day of Week	Time Period		% Chg		% Chg		% Chg		% Chg		% Chg		% Chg		% Chg		% Chg		% Chg
Sunday	Current Month	19.4	0.0	36.8	14.0	52.8	-12.3	87.51	2.1	99.71	-0.9	87.8	3.0	17.02	2.1	36.70	12.9	46.4	-9.6
	Year To Date	19.4	0.0	36.8	14.0	52.8	-12.3	87.51	2.1	99.71	-0.9	87.8	3.0	17.02	2.1	36.70	12.9	46.4	-9.6
	Running 3 Month	19.2	-33.3	38.0	26.1	50.5	-47.1	92.38	1.5	101.58	1.9	90.9	-0.4	17.72	-32.3	38.59	28.5	45.9	-47.4
	Running 12 Month	29.3	0.3	46.0	10.8	63.7	-9.4	115.31	2.1	117.76	-2.7	97.9	4.9	33.78	2.4	54.13	7.8	62.4	-5.0
Monday	Current Month	14.5	-43.5	54.4	20.7	26.7	-53.2	76.70	-12.7	105.33	-0.2	72.8	-12.5	11.13	-50.7	57.26	20.5	19.4	-59.1
	Year To Date	14.5	-43.5	54.4	20.7	26.7	-53.2	76.70	-12.7	105.33	-0.2	72.8	-12.5	11.13	-50.7	57.26	20.5	19.4	-59.1
	Running 3 Month	18.0	-46.6	53.5	11.8	33.7	-52.3	94.78	7.0	106.90	0.4	88.7	6.6	17.10	-42.9	57.23	12.2	29.9	-49.1
	Running 12 Month	28.7	-13.8	62.2	9.0	46.2	-21.0	107.19	2.2	118.67	-2.0	90.3	4.3	30.79	-11.9	73.85	6.9	41.7	-17.6
Tuesday	Current Month	16.7	-44.2	63.5	18.7	26.2	-53.0	89.93	-7.6	107.44	-2.3	83.7	-5.4	14.99	-48.4	68.24	15.9	22.0	-55.5
	Year To Date	16.7	-44.2	63.5	18.7	26.2	-53.0	89.93	-7.6	107.44	-2.3	83.7	-5.4	14.99	-48.4	68.24	15.9	22.0	-55.5
	Running 3 Month	17.8	-50.4	60.7	8.7	29.3	-54.4	98.11	8.6	107.19	-3.3	91.5	12.3	17.42	-46.1	65.03	5.1	26.8	-48.7
	Running 12 Month	30.7	-12.6	69.9	9.6	43.9	-20.3	103.15	6.0	118.74	-0.1	86.9	6.1	31.69	-7.4	83.06	9.5	38.2	-15.4
Wednesday	Current Month	12.6	-55.3	51.3	-7.6	24.6	-51.6	83.43	-10.8	107.52	-2.0	77.6	-8.9	10.51	-60.1	55.13	-9.5	19.1	-55.9
	Year To Date	12.6	-55.3	51.3	-7.6	24.6	-51.6	83.43	-10.8	107.52	-2.0	77.6	-8.9	10.51	-60.1	55.13	-9.5	19.1	-55.9
	Running 3 Month	18.8	-46.6	57.7	3.0	32.6	-48.1	92.27	2.9	107.91	-2.5	85.5	5.5	17.35	-45.0	62.26	0.5	27.9	-45.3
	Running 12 Month	30.6	-13.6	69.1	7.8	44.3	-19.9	101.14	8.2	118.25	0.4	85.5	7.7	30.95	-6.6	81.76	8.3	37.9	-13.7
Thursday	Current Month	18.0	-38.5	44.9	-3.7	40.1	-36.2	97.01	13.6	100.10	-1.3	96.9	15.1	17.49	-30.2	44.94	-4.9	38.9	-26.6
	Year To Date	18.0	-38.5	44.9	-3.7	40.1	-36.2	97.01	13.6	100.10	-1.3	96.9	15.1	17.49	-30.2	44.94	-4.9	38.9	-26.6
	Running 3 Month	21.3	-44.1	52.2	6.9	40.8	-47.7	97.87	8.4	101.94	-5.0	96.0	14.1	20.82	-39.5	53.21	1.5	39.1	-40.4
	Running 12 Month	33.7	-15.0	65.4	7.1	51.5	-20.6	105.39	6.8	118.55	-0.4	88.9	7.2	35.50	-9.2	77.48	6.7	45.8	-14.9
Friday	Current Month	29.4	-40.9	51.1	26.0	57.4	-53.1	99.40	15.2	96.68	-4.2	102.8	20.3	29.21	-31.9	49.45	20.7	59.1	-43.6
	Year To Date	29.4	-40.9	51.1	26.0	57.4	-53.1	99.40	15.2	96.68	-4.2	102.8	20.3	29.21	-31.9	49.45	20.7	59.1	-43.6
	Running 3 Month	27.5	-48.7	56.8	24.0	48.4	-58.7	106.11	7.1	106.22	-10.6	99.9	19.9	29.20	-45.1	60.38	10.8	48.4	-50.4
	Running 12 Month	50.8	-14.4	73.6	11.0	69.0	-22.9	125.82	1.0	129.70	-1.7	97.0	2.8	63.92	-13.6	95.49	9.1	66.9	-20.8
Saturday	Current Month	26.2	-43.7	45.9	18.5	57.2	-52.5	108.38	19.4	94.56	-4.2	114.6	24.6	28.43	-32.8	43.41	13.6	65.5	-40.8
	Year To Date	26.2	-43.7	45.9	18.5	57.2	-52.5	108.38	19.4	94.56	-4.2	114.6	24.6	28.43	-32.8	43.41	13.6	65.5	-40.8
	Running 3 Month	27.7	-49.3	53.7	21.1	51.6	-58.1	111.67	8.4	106.18	-12.5	105.2	23.9	30.97	-45.0	57.04	5.9	54.3	-48.1
	Running 12 Month	53.0	-11.4	72.1	9.4	73.5	-18.9	130.37	1.7	130.51	-2.7	99.9	4.6	69.05	-9.9	94.06	6.3	73.4	-15.3
Weekday/Weekend																			
Weekday (Sun-Thu)	Current Month	16.2	-39.4	50.0	5.9	32.3	-42.8	87.88	-3.1	104.51	-1.8	84.1	-1.3	14.20	-41.3	52.23	4.0	27.2	-43.6
	Year To Date	16.2	-39.4	50.0	5.9	32.3	-42.8	87.88	-3.1	104.51	-1.8	84.1	-1.3	14.20	-41.3	52.23	4.0	27.2	-43.6
	Running 3 Month	19.0	-44.6	52.4	9.5	36.3	-49.5	95.11	5.7	105.43	-2.2	90.2	8.2	18.08	-41.5	55.26	7.1	32.7	-45.3
	Running 12 Month	30.6	-11.4	62.5	8.7	49.0	-18.5	106.32	5.3	118.43	-0.8	89.8	6.2	32.55	-6.7	74.07	7.8	44.0	-13.4
Weekend (Fri-Sat)	Current Month	28.0	-41.9	48.8	23.1	57.3	-52.8	103.14	16.6	95.80	-4.0	107.7	21.5	28.86	-32.2	46.77	18.1	61.7	-42.6
	Year To Date	28.0	-41.9	48.8	23.1	57.3	-52.8	103.14	16.6	95.80	-4.0	107.7	21.5	28.86	-32.2	46.77	18.1	61.7	-42.6
	Running 3 Month	27.6	-49.0	55.3	22.7	49.9	-58.5	108.80	7.7	106.20	-11.6	102.4	21.8	30.05	-45.1	58.77	8.5	51.1	-49.4
	Running 12 Month	51.9	-12.9	72.9	10.2	71.2	-21.0	128.12	1.4	130.10	-2.2	98.5	3.7	66.46	-11.7	94.78	7.7	70.1	-18.0
Total	Current Month	19.5	-39.0	49.6	9.8	39.2	-44.5	94.79	4.6	102.02	-2.9	92.9	7.7	18.46	-36.2	50.65	6.6	36.4	-40.2
	Year To Date	19.5	-39.0	49.6	9.8	39.2	-44.5	94.79	4.6	102.02	-2.9	92.9	7.7	18.46	-36.2	50.65	6.6	36.4	-40.2
	Running 3 Month	21.4	-46.1	53.3	13.2	40.2	-52.4	100.83	6.5	105.69	-5.0	95.4	12.1	21.59	-42.6	56.29	7.6	38.4	-46.7
	Running 12 Month	36.6	-11.9	65.5	9.2	55.8	-19.3	115.67	3.5	122.17	-1.2	94.7	4.8	42.28	-8.9	80.01	7.9	52.8	-15.5

Tab 7 - Daily Data for the Month

Wingate by Wyndham High Point 3901 Sedgebrook St High Point, NC 27265 Phone: (336) 812-8787
STR # 42232 ChainID: 46797 MgtCo: None Owner: None
For the Month of: January 2025 Date Created: February 19, 2025 Daily Competitive Set Data Excludes Subject Property



	We	Th	Fr	Sa	Su	Mo	Tu	We	Th	Fr	Sa	Su	Mo	Tu	We	Th	Fr	Sa	Su	Mo	Tu	We	Th	Fr	Sa	Su	Mo	Tu	We	Th	Fr	
Occupancy (%)	January																															
	1	2	3	4	5	6	7	8	9	10	11	12	13	14	15	16	17	18	19	20	21	22	23	24	25	26	27	28	29	30	31	
	My Property	3.7	13.6	19.8	19.8	19.8	14.8	12.3	12.3	11.1	22.2	21.0	18.5	13.6	13.6	13.6	25.9	37.0	38.3	25.9	14.8	21.0	19.8	16.0	22.2	25.9	13.6	14.8	19.8	13.6	23.5	45.7
	Competitive Set	20.0	30.4	56.6	50.4	33.2	44.0	53.4	55.7	39.1	51.1	38.1	37.0	60.6	74.5	65.7	56.6	54.7	49.4	44.0	56.2	66.6	58.7	47.9	36.4	45.7	33.0	56.6	59.6	56.2	50.4	57.0
Index (MPI)	18.5	44.6	34.9	39.2	59.5	33.6	23.1	22.1	28.4	43.5	55.1	50.0	22.4	18.2	20.7	45.8	67.7	77.5	58.9	26.4	31.5	33.6	33.5	61.1	56.7	41.2	26.2	33.2	24.2	46.5	80.1	

% Chg																															
My Property	-86.4	-54.2	-48.4	-51.5	-11.1	-36.8	-58.3	-47.4	-59.1	-47.1	-58.5	0.0	-52.2	-57.7	-59.3	-30.0	-43.4	-27.9	10.5	-60.0	-19.0	-15.8	-31.6	-58.1	-38.2	0.0	-45.5	-40.7	-59.3	-36.7	-27.5
Competitive Set	-48.1	-28.9	48.6	44.5	2.0	-22.5	-22.3	-14.1	-24.3	27.7	-10.9	13.7	35.7	39.4	20.7	22.6	53.0	53.6	71.1	21.1	19.9	7.8	4.7	-25.0	1.4	-13.9	0.4	1.4	-13.7	-16.8	-19.3
Index (MPI)	-73.7	-35.6	-65.3	-66.4	-12.8	-18.5	-46.4	-38.7	-46.0	-58.5	-53.4	-12.1	-64.8	-69.7	-66.2	-42.9	-63.0	-53.1	-35.4	-67.0	-32.5	-21.9	-34.6	-44.2	-39.1	16.1	-45.7	-41.6	-52.8	-23.8	-10.1

ADR	January																															
	1	2	3	4	5	6	7	8	9	10	11	12	13	14	15	16	17	18	19	20	21	22	23	24	25	26	27	28	29	30	31	
	My Property	80.07	106.77	95.81	99.10	91.38	70.16	78.86	90.57	91.32	90.62	128.12	87.63	69.64	96.47	83.19	112.06	97.62	106.16	83.77	78.48	93.33	79.17	88.15	98.17	102.76	88.85	87.91	88.74	84.29	83.48	107.27
	Competitive Set	90.57	89.28	92.72	93.31	97.13	100.40	104.43	107.95	100.64	92.17	88.40	99.11	107.39	111.32	109.24	104.30	98.14	98.30	99.24	101.85	104.22	105.79	98.47	97.49	95.92	102.29	109.21	107.54	111.45	101.71	101.46
	Index (ARI)	88.4	119.6	103.3	106.2	94.1	69.9	75.5	83.9	90.7	98.3	144.9	88.4	64.8	86.7	76.2	107.4	99.5	108.0	84.4	77.1	89.5	74.8	89.5	100.7	107.1	86.9	80.5	82.5	75.6	82.1	105.7

% Chg																															
My Property	-16.6	16.3	9.1	17.3	5.2	-22.6	-20.6	-5.1	2.5	6.4	29.6	-4.5	-15.8	16.7	-0.3	39.6	11.8	17.7	16.7	-12.5	-1.6	-3.1	7.7	15.3	16.4	-11.5	-1.2	-23.3	-22.7	-6.4	-3.1
Competitive Set	-10.3	-11.8	-9.7	-8.4	-4.8	-5.5	-6.5	-5.9	-2.7	-10.6	-10.1	3.0	4.5	5.5	4.1	7.2	0.9	4.6	4.6	-2.3	-2.5	-0.1	-5.8	-3.7	-4.6	-5.1	-2.6	-4.5	-5.8	-2.5	-10.1
Index (ARI)	-7.0	31.9	20.8	28.1	10.5	-18.1	-15.1	0.9	5.3	19.0	44.2	-7.3	-19.4	10.7	-4.3	30.3	10.9	12.5	11.6	-10.5	0.9	-3.1	14.4	19.6	22.0	-6.7	1.5	-19.7	-17.9	-4.1	7.7

RevPAR	January																															
	1	2	3	4	5	6	7	8	9	10	11	12	13	14	15	16	17	18	19	20	21	22	23	24	25	26	27	28	29	30	31	
	2.97	14.50	18.92	19.58	18.05	10.39	9.74	11.18	10.15	20.14	26.89	16.23	9.46	13.10	11.30	29.05	36.16	40.63	21.72	11.63	19.59	15.64	14.15	21.82	26.64	12.07	13.02	17.53	11.45	19.58	49.00	
	Competitive Set	18.11	27.16	52.47	47.05	32.24	44.22	55.77	60.18	39.40	47.07	33.67	36.69	65.12	82.90	71.82	59.03	53.66	48.52	43.71	57.21	69.41	62.12	47.14	35.47	43.88	33.73	61.81	64.06	62.60	51.29	57.86
	Index (RGI)	16.4	53.4	36.1	41.6	56.0	23.5	17.5	18.6	25.8	42.8	79.9	44.2	14.5	15.8	15.7	49.2	67.4	83.7	49.7	20.3	28.2	25.2	30.0	61.5	60.7	35.8	21.1	27.4	18.3	38.2	84.7

% Chg																															
My Property	-88.6	-46.7	-43.7	-43.1	-6.5	-51.1	-66.9	-50.0	-58.1	-43.7	-46.2	-4.5	-59.7	-50.6	-59.4	-2.3	-36.7	-15.2	29.0	-65.0	-20.4	-18.4	-26.3	-51.8	-28.1	-11.5	-46.1	-54.5	-68.5	-40.7	-29.7
Competitive Set	-53.4	-37.2	34.2	32.4	-2.9	-26.7	-27.3	-19.2	-26.3	14.2	-19.9	17.1	41.8	47.1	25.7	31.4	54.3	60.7	78.9	18.3	16.9	7.8	-1.5	-27.7	-3.3	-18.3	-2.2	-3.1	-18.8	-18.9	-27.4
Index (RGI)	-75.6	-15.1	-58.0	-57.0	-3.6	-33.3	-54.5	-38.2	-43.1	-50.7	-32.9	-18.5	-71.6	-66.4	-67.7	-25.6	-59.0	-47.2	-27.9	-70.4	-31.9	-24.3	-25.2	-33.2	-25.7	8.3	-44.9	-53.1	-61.2	-26.9	-3.2

2025 © CoStar Group. This STR Report is a publication of STR, LLC and STR Global, Ltd., CoStar Group companies, and is intended solely for use by paid subscribers. The information in the STR Report is provided on an "as is" and "as available" basis and should not be construed as investment, tax, accounting or legal advice. Reproduction or distribution of this STR Report, in whole or part, without written permission is prohibited and subject to legal action. If you have received this report and are NOT a subscriber to this STR Report, please contact us immediately. Source: 2025 STR, LLC / STR Global, Ltd. trading as "STR".



How can we assist you?

Glossary:

For all STR definitions, please click here or visit www.str.com/data-insights/resources/glossary

Frequently Asked Questions (FAQ):

For all STR FAQs, please click here or visit www.str.com/data-insights/resources/FAQ

For additional support, please [contact](#) your regional office.

For the latest in industry news, visit HotelNewsNow.com.

To learn more about the Hotel Data Conference, visit HotelDataConference.com.