

STR # 42232 / Created January 17, 2024



Monthly STAR Report : Wingate by Wyndham High Point

For the Month of: December 2023

Currency: US Dollar / Competitive Set Data Excludes Subject Property

Table Of Contents	1
Monthly Performance at a Glance	2
STAR Summary	3
Competitive Set Report	4
Response Report	5
Day of Week & Weekday/Weekend	6
Daily Data for the Month	7
Help	8

Corporate North American Headquarters
T: +1 (615) 824 8664
support@str.com www.str.com

International Headquarters
T: +44 (0) 207 922 1930
hotelinfo@str.com www.str.com

2024 © CoStar Group. This STR Report is a publication of STR, LLC and STR Global, Ltd., CoStar Group companies, and is intended solely for use by paid subscribers. The information in the STR Report is provided on an "as is" and "as available" basis and should not be construed as investment, tax, accounting or legal advice. Reproduction or distribution of this STR Report, in whole or part, without written permission is prohibited and subject to legal action. If you have received this report and are NOT a subscriber to this STR Report, please contact us immediately. Source: 2024 STR, LLC / STR Global, Ltd. trading as "STR".

Tab 2 - Monthly Performance at a Glance - My Property vs. Competitive Set

Wingate by Wyndham High Point 3901 Sedgebrook St High Point, NC 27265 Phone: (336) 812-8787
STR # 42232 ChainID: 46797 MgtCo: None Owner: None
For the Month of: December 2023 Date Created: January 17, 2024 Monthly Competitive Set Data Excludes Subject Property

December 2023									
	Occupancy (%)			ADR			RevPAR		
	My Prop	Comp Set	Index (MPI)	My Prop	Comp Set	Index (ARI)	My Prop	Comp Set	Index (RGI)
Current Month	38.7	38.4	100.9	91.72	102.95	89.1	35.54	39.54	89.9
Year To Date	41.9	60.3	69.5	109.12	122.86	88.8	45.69	74.06	61.7
Running 3 Month	46.8	54.5	85.9	113.11	133.09	85.0	52.90	72.47	73.0
Running 12 Month	41.9	60.3	69.5	109.12	122.86	88.8	45.69	74.06	61.7

December 2023 vs. 2022 Percent Change (%)									
	Occupancy			ADR			RevPAR		
	My Prop	Comp Set	Index (MPI)	My Prop	Comp Set	Index (ARI)	My Prop	Comp Set	Index (RGI)
Current Month	56.7	-24.8	108.4	-5.8	9.9	-14.3	47.5	-17.4	78.6
Year To Date	16.5	-0.9	17.6	-4.2	5.2	-8.9	11.7	4.2	7.2
Running 3 Month	29.5	-5.5	37.0	-6.3	7.3	-12.6	21.4	1.4	19.7
Running 12 Month	16.5	-0.9	17.6	-4.2	5.2	-8.9	11.7	4.2	7.2

2024 © CoStar Group. This STR Report is a publication of STR, LLC and STR Global, Ltd., CoStar Group companies, and is intended solely for use by paid subscribers. The information in the STR Report is provided on an “as is” and “as available” basis and should not be construed as investment, tax, accounting or legal advice. Reproduction or distribution of this STR Report, in whole or part, without written permission is prohibited and subject to legal action. If you have received this report and are NOT a subscriber to this STR Report, please contact us immediately. Source: 2024 STR, LLC / STR Global, Ltd. trading as “STR”.

Tab 3 - STAR Summary - My Property vs. Comp Set and Industry Segments

Wingate by Wyndham High Point 3901 Sedgebrook St High Point, NC 27265 Phone: (336) 812-8787
STR # 42232 ChainID: 46797 MgtCo: None Owner: None
For the Month of: December 2023 Date Created: January 17, 2024 Monthly Competitive Set Data Excludes Subject Property

Wingate by Wyndham High Point
Market: Greensboro/Winston Salem, NC
Market Class: Midscale Class
Submarket: Burlington/High Point, NC
Submarket Scale: Midscale Chains
Competitive Set: Competitors

Occupancy (%)							
Current Month	% Chg	Year to Date	% Chg	Running 3 Month	% Chg	Running 12 Month	% Chg
38.7	56.7	41.9	16.5	46.8	29.5	41.9	16.5
45.2	-3.0	58.3	0.6	55.1	-0.4	58.3	0.6
46.5	7.3	55.2	-3.0	54.0	3.4	55.2	-3.0
48.9	-2.7	59.2	-2.5	56.3	-2.9	59.2	-2.5
48.3	-6.5	62.1	-3.2	58.7	-3.9	62.1	-3.2
38.4	-24.8	60.3	-0.9	54.5	-5.5	60.3	-0.9

Supply			
Month % Chg	YTD % Chg	Run 3 Mon % Chg	Run 12 Mon % Chg
0.0	0.0	0.0	0.0
0.1	0.5	0.1	0.5
0.0	2.4	0.0	2.4
1.6	0.4	1.7	0.4
3.6	3.3	5.0	3.3
0.0	0.0	0.0	0.0

Wingate by Wyndham High Point
Market: Greensboro/Winston Salem, NC
Market Class: Midscale Class
Submarket: Burlington/High Point, NC
Submarket Scale: Midscale Chains
Competitive Set: Competitors

Average Daily Rate							
Current Month	% Chg	Year to Date	% Chg	Running 3 Month	% Chg	Running 12 Month	% Chg
91.72	-5.8	109.12	-4.2	113.11	-6.3	109.12	-4.2
94.42	-0.3	112.81	4.1	117.05	1.6	112.81	4.1
70.50	-5.8	83.46	1.7	84.85	-4.0	83.46	1.7
86.92	0.9	101.22	5.4	103.10	3.2	101.22	5.4
104.71	1.3	122.16	5.8	124.14	4.0	122.16	5.8
102.95	9.9	122.86	5.2	133.09	7.3	122.86	5.2

Demand			
Month % Chg	YTD % Chg	Run 3 Mon % Chg	Run 12 Mon % Chg
56.7	16.5	29.5	16.5
-3.0	1.1	-0.3	1.1
7.3	-0.7	3.4	-0.7
-1.1	-2.1	-1.2	-2.1
-3.1	0.1	1.0	0.1
-24.8	-0.9	-5.5	-0.9

Wingate by Wyndham High Point
Market: Greensboro/Winston Salem, NC
Market Class: Midscale Class
Submarket: Burlington/High Point, NC
Submarket Scale: Midscale Chains
Competitive Set: Competitors

RevPAR							
Current Month	% Chg	Year to Date	% Chg	Running 3 Month	% Chg	Running 12 Month	% Chg
35.54	47.5	45.69	11.7	52.90	21.4	45.69	11.7
42.70	-3.3	65.77	4.7	64.53	1.1	65.77	4.7
32.80	1.0	46.10	-1.3	45.81	-0.8	46.10	-1.3
42.48	-1.7	59.93	2.7	58.03	0.3	59.93	2.7
50.54	-5.3	75.91	2.5	72.89	0.0	75.91	2.5
39.54	-17.4	74.06	4.2	72.47	1.4	74.06	4.2

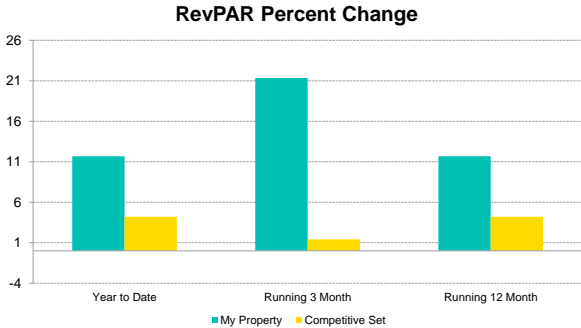
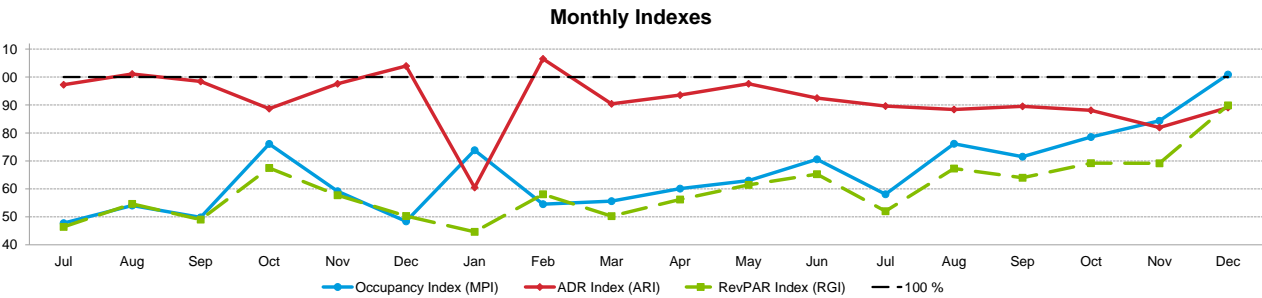
Revenue			
Month % Chg	YTD % Chg	Run 3 Mon % Chg	Run 12 Mon % Chg
47.5	11.7	21.4	11.7
-3.2	5.2	1.2	5.2
1.0	1.0	-0.8	1.0
-0.1	3.1	2.0	3.1
-1.9	5.8	5.0	5.8
-17.4	4.2	1.4	4.2

Market: Greensboro/Winston Salem, NC
Market Class: Midscale Class
Submarket: Burlington/High Point, NC
Submarket Scale: Midscale Chains
Competitive Set: Competitors

Census/Sample - Properties & Rooms					
Census		Sample		Sample %	
Properties	Rooms	Properties	Rooms	Rooms	
227	21545	175	18728	86.9	
36	3232	28	2682	83.0	
92	6070	61	4762	78.5	
36	2930	36	2930	100.0	
5	470	5	470	100.0	

Tab 4 - Competitive Set Report

Wingate by Wyndham High Point 3901 Sedgebrook St High Point, NC 27265 Phone: (336) 812-8787
STR # 42232 ChainID: 46797 MgtCo: None Owner: None
For the Month of: December 2023 Date Created: January 17, 2024 Monthly Competitive Set Data Excludes Subject Property



Occupancy (%)	2022						2023											
	Jul	Aug	Sep	Oct	Nov	Dec	Jan	Feb	Mar	Apr	May	Jun	Jul	Aug	Sep	Oct	Nov	Dec
My Property	32.5	38.2	32.7	51.8	31.7	24.7	36.0	32.8	36.4	42.7	36.8	46.3	38.0	48.2	44.4	52.8	48.8	38.7
Competitive Set	68.0	70.6	65.6	68.1	53.5	51.1	48.8	60.2	65.5	71.0	58.5	65.6	65.4	63.3	62.2	67.2	57.9	38.4
Index (MPI)	47.8	54.0	49.8	76.1	59.2	48.4	73.8	54.5	55.6	60.1	63.0	70.6	58.1	76.1	71.5	78.6	84.4	100.9
Rank	6 of 6	6 of 6	6 of 6	6 of 6	6 of 6	6 of 6	6 of 6	6 of 6	6 of 6	6 of 6	6 of 6	6 of 6	6 of 6	6 of 6	6 of 6	6 of 6	5 of 6	4 of 6

% Chg	2022						2023											
	Jul	Aug	Sep	Oct	Nov	Dec	Jan	Feb	Mar	Apr	May	Jun	Jul	Aug	Sep	Oct	Nov	Dec
My Property	15.4	37.4	7.2	19.4	12.4	12.9	43.3	-4.7	-5.7	-11.1	2.1	24.0	16.8	26.3	36.0	1.8	54.2	56.7
Competitive Set	6.5	32.1	23.8	9.0	11.1	16.5	20.8	10.0	8.1	-1.8	-3.0	1.7	-3.9	-10.3	-5.3	-1.4	8.1	-24.8
Index (MPI)	8.4	4.1	-13.5	9.5	1.2	-3.1	18.6	-13.4	-12.7	-9.5	5.3	21.9	21.6	40.9	43.6	3.2	42.6	108.4
Rank	2 of 6	2 of 6	5 of 6	2 of 6	3 of 6	4 of 6	4 of 6	5 of 6	4 of 6	5 of 6	3 of 6	2 of 6	3 of 6	1 of 6	1 of 6	3 of 6	2 of 6	1 of 6

Year To Date			Running 3 Month			Running 12 Month		
2021	2022	2023	2021	2022	2023	2021	2022	2023
29.5	35.9	41.9	31.2	36.1	46.8	29.5	35.9	41.9
49.8	60.8	60.3	51.5	57.6	54.5	49.8	60.8	60.3
59.2	59.1	69.5	60.5	62.7	85.9	59.2	59.1	69.5
6 of 6	6 of 6	6 of 6	6 of 6	6 of 6	5 of 6	6 of 6	6 of 6	6 of 6

ADR	2022						2023											
	Jul	Aug	Sep	Oct	Nov	Dec	Jan	Feb	Mar	Apr	May	Jun	Jul	Aug	Sep	Oct	Nov	Dec
My Property	110.62	117.38	111.33	139.78	107.15	97.40	57.13	114.94	114.01	152.50	114.01	110.33	98.81	99.26	104.68	140.72	99.84	91.72
Competitive Set	113.77	116.09	113.10	157.63	109.80	93.69	94.46	107.92	126.14	162.98	116.83	119.34	110.26	112.30	116.93	159.70	121.86	102.95
Index (ARI)	97.2	101.1	98.4	88.7	97.6	104.0	60.5	106.5	90.4	93.6	97.6	92.5	89.6	88.4	89.5	88.1	81.9	89.1
Rank	4 of 6	3 of 6	4 of 6	4 of 6	4 of 6	3 of 6	6 of 6	2 of 6	5 of 6	4 of 6	4 of 6	5 of 6	5 of 6	5 of 6	5 of 6	4 of 6	5 of 6	5 of 6

% Chg	2022						2023											
	Jul	Aug	Sep	Oct	Nov	Dec	Jan	Feb	Mar	Apr	May	Jun	Jul	Aug	Sep	Oct	Nov	Dec
My Property	7.0	13.3	0.9	3.0	13.6	1.3	-39.0	9.7	14.7	12.9	-1.2	6.5	-10.7	-15.4	-6.0	0.7	-6.8	-5.8
Competitive Set	15.7	18.9	6.9	16.9	10.7	3.3	1.1	6.7	13.4	18.0	-1.1	5.7	-3.1	-3.3	3.4	1.3	11.0	9.9
Index (ARI)	-7.5	-4.7	-5.6	-12.0	2.6	-1.9	-39.7	2.9	1.1	-4.3	-0.1	0.7	-7.8	-12.6	-9.1	-0.6	-16.0	-14.3
Rank	6 of 6	4 of 6	5 of 6	5 of 6	2 of 6	4 of 6	6 of 6	2 of 6	4 of 6	5 of 6	2 of 6	3 of 6	5 of 6	6 of 6	6 of 6	3 of 6	6 of 6	6 of 6

Year To Date			Running 3 Month			Running 12 Month		
2021	2022	2023	2021	2022	2023	2021	2022	2023
109.97	113.86	109.12	114.19	120.67	113.11	109.97	113.86	109.12
99.94	116.83	122.86	111.32	124.04	133.09	99.94	116.83	122.86
110.0	97.5	88.8	102.6	97.3	85.0	110.0	97.5	88.8
1 of 6	4 of 6	5 of 6	4 of 6	4 of 6	5 of 6	1 of 6	4 of 6	5 of 6

RevPAR	2022						2023											
	Jul	Aug	Sep	Oct	Nov	Dec	Jan	Feb	Mar	Apr	May	Jun	Jul	Aug	Sep	Oct	Nov	Dec
My Property	35.95	44.78	36.38	72.42	33.95	24.09	20.57	37.75	41.54	65.08	41.95	51.08	37.50	47.83	46.52	74.25	48.77	35.54
Competitive Set	77.40	81.97	74.21	107.34	58.80	47.86	46.07	65.01	82.63	115.73	68.29	78.25	72.06	71.09	72.69	107.26	70.55	39.54
Index (RGI)	46.4	54.6	49.0	67.5	57.7	50.3	44.6	58.1	50.3	56.2	61.4	65.3	52.0	67.3	64.0	69.2	69.1	89.9
Rank	6 of 6	6 of 6	6 of 6	5 of 6	6 of 6	6 of 6	6 of 6	6 of 6	6 of 6	6 of 6	6 of 6	6 of 6	6 of 6	6 of 6	6 of 6	5 of 6	6 of 6	5 of 6

Year To Date			Running 3 Month			Running 12 Month		
2021	2022	2023	2021	2022	2023	2021	2022	2023
32.44	40.91	45.69	35.63	43.59	52.90	32.44	40.91	45.69
49.81	71.07	74.06	57.38	71.47	72.47	49.81	71.07	74.06
65.1	57.6	61.7	62.1	61.0	73.0	65.1	57.6	61.7
5 of 6	6 of 6	6 of 6	5 of 6	6 of 6	5 of 6	5 of 6	6 of 6	6 of 6

% Chg	2022						2023											
	Jul	Aug	Sep	Oct	Nov	Dec	Jan	Feb	Mar	Apr	May	Jun	Jul	Aug	Sep	Oct	Nov	Dec
My Property	23.5	55.7	8.2	22.9	27.6	14.4	-12.7	4.6	8.2	0.4	0.9	32.1	4.3	6.8	27.9	2.5	43.6	47.5
Competitive Set	23.2	57.0	32.4	27.4	22.9	20.3	22.1	17.3	22.5	15.8	-4.1	7.6	-6.9	-13.3	-2.0	-0.1	20.0	-17.4
Index (RGI)	0.3	-0.8	-18.3	-3.6	3.9	-4.9	-28.5	-10.9	-11.7	-13.4	5.1	22.8	12.0	23.2	30.6	2.6	19.7	78.6
Rank	2 of 6	2 of 6	4 of 6	4 of 6	3 of 6	4 of 6	5 of 6	5 of 6	4 of 6	5 of 6	3 of 6	2 of 6	2 of 6	2 of 6	1 of 6	3 of 6	3 of 6	2 of 6

Year To Date			Running 3 Month			Running 12 Month		
2021	2022	2023	2021	2022	2023	2021	2022	2023
38.0	26.1	11.7	54.8	22.4	21.4	38.0	26.1	11.7
105.1	42.7	4.2	161.1	24.5	1.4	105.1	42.7	4.2
-32.7	-11.6	7.2	-40.7	-1.8	19.7	-32.7	-11.6	7.2
6 of 6	5 of 6	3 of 6	6 of 6	3 of 6	2 of 6	6 of 6	5 of 6	3 of 6

Tab 5 - Response Report

Wingate by Wyndham High Point 3901 Sedgebrook St High Point, NC 27265 Phone: (336) 812-8787
STR # 42232 ChainID: 46797 MgtCo: None Owner: None
For the Month of: December 2023 Date Created: January 17, 2024

This Year

Dec 8th - First Day of Hanukkah
Dec 24th - Christmas Eve
Dec 25th - Christmas Day
Dec 26th - First Day of Kwanzaa
Dec 31st - New Year's Eve

December 2023 (This Year)

Sun	Mon	Tue	Wed	Thu	Fri	Sat
					1	2
3	4	5	6	7	8	9
10	11	12	13	14	15	16
17	18	19	20	21	22	23
24	25	26	27	28	29	30
31						

December 2022 (Last Year)

Sun	Mon	Tue	Wed	Thu	Fri	Sat
				1	2	3
4	5	6	7	8	9	10
11	12	13	14	15	16	17
18	19	20	21	22	23	24
25	26	27	28	29	30	31

Last Year

Dec 19th - First Day of Hanukkah
Dec 24th - Christmas Eve
Dec 25th - Christmas Day
Dec 26th - First Day of Kwanzaa
Dec 31st - New Year's Eve

STR#	Name	City, State	Zip	Phone	Rooms	Open Date
42232	Wingate by Wyndham High Point	High Point, NC	27265	(336) 812-8787	81	200010
32728	Hampton by Hilton Inn Greensboro-Airport	Greensboro, NC	27409	(336) 605-5500	125	199606
33651	Four Points by Sheraton Greensboro Airport	Greensboro, NC	27409	(336) 882-6666	112	199703
37600	Clarion Pointe Greensboro Airport	Greensboro, NC	27409	(336) 454-0333	60	199901
48038	Fairfield Inn Greensboro Airport	Greensboro, NC	27409	(336) 841-0140	78	200304
58872	Holiday Inn Express & Suites Greensboro - Airport	Greensboro, NC	27409-9400	(336) 882-0004	95	200906
					551	

2022												2023											
Jan	Feb	Mar	Apr	May	Jun	Jul	Aug	Sep	Oct	Nov	Dec	Jan	Feb	Mar	Apr	May	Jun	Jul	Aug	Sep	Oct	Nov	Dec
●	●	●	●	●	●	●	●	●	●	●	●	●	●	●	●	●	●	●	●	●	●	●	●
●	●	●	●	●	●	●	●	●	●	●	●	●	●	●	●	●	●	●	●	●	●	●	●
○	○	●	●	●	●	●	●	●	●	●	●	●	●	●	●	●	●	●	●	●	○	●	●
●	●	●	●	●	●	●	●	●	●	●	●	●	●	●	●	●	●	●	●	●	●	●	●
●	●	●	●	●	●	●	●	●	●	●	●	●	●	●	●	●	●	●	●	●	●	●	●
●	●	●	●	●	●	●	●	●	●	●	●	●	●	●	●	●	●	●	●	●	●	●	●

Data received:

- = Monthly Only
- = Monthly & Daily

Tab 6 - Day of Week and Weekday/Weekend Report

Wingate by Wyndham High Point

3901 Sedgebrook St

High Point, NC 27265

Phone: (336) 812-8787

STR # 42232

ChainID: 46797

MgtCo: None

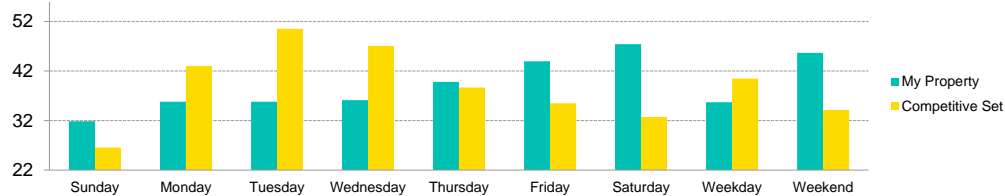
Owner: None

For the Month of: December 2023

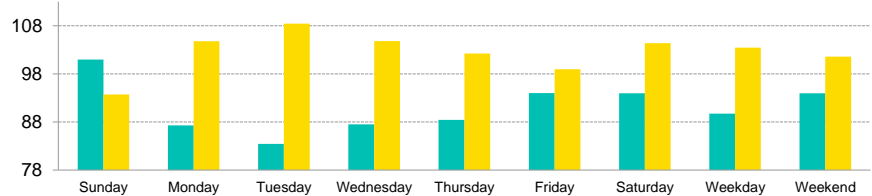
Date Created: January 17, 2024

Monthly Competitive Set Data Excludes Subject Property

Current Month Occupancy



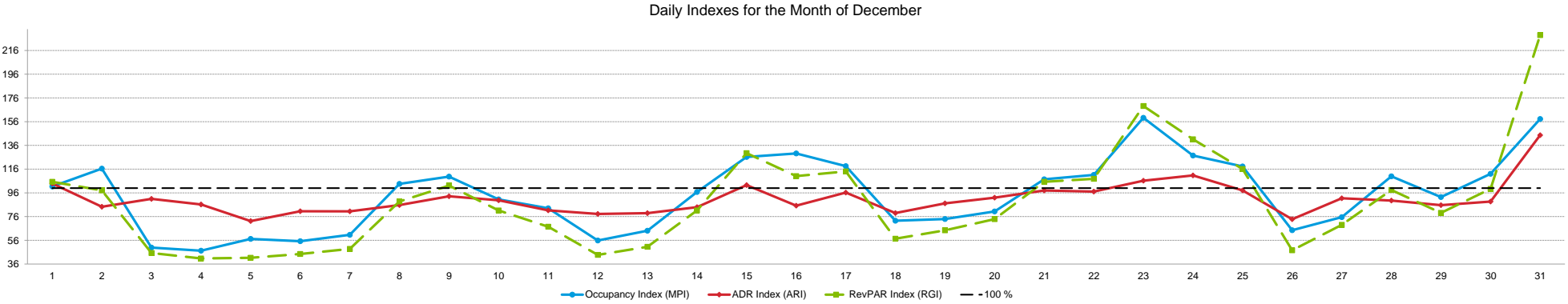
Current Month ADR



		Occupancy (%)						Average Daily Rate						RevPAR					
Day of Week	Time Period	My Property		Competitive Set		Index (MPI)		My Property		Competitive Set		Index (ARI)		My Property		Competitive Set		Index (RGI)	
			% Chg		% Chg		% Chg		% Chg		% Chg		% Chg		% Chg		% Chg		% Chg
Sunday	Current Month	31.9	98.5	26.6	-30.5	120.0	185.4	100.97	16.7	93.71	6.7	107.8	9.3	32.16	131.6	24.88	-25.8	129.3	212.0
	Year To Date	28.8	3.4	41.1	-3.6	70.0	7.2	112.40	2.0	119.95	2.8	93.7	-0.8	32.35	5.4	49.35	-0.8	65.6	6.3
	Running 3 Month	34.5	26.1	36.4	-13.0	94.7	44.9	126.25	2.0	135.59	6.3	93.1	-4.1	43.53	28.6	49.35	-7.5	88.2	39.0
	Running 12 Month	28.8	3.4	41.1	-3.6	70.0	7.2	112.40	2.0	119.95	2.8	93.7	-0.8	32.35	5.4	49.35	-0.8	65.6	6.3
Monday	Current Month	35.8	56.8	43.0	-18.9	83.2	93.4	87.28	-7.8	104.76	9.0	83.3	-15.5	31.25	44.5	45.08	-11.6	69.3	63.4
	Year To Date	33.8	20.8	57.4	-0.6	58.9	21.6	102.30	-6.1	120.17	5.7	85.1	-11.2	34.61	13.4	69.00	5.0	50.2	7.9
	Running 3 Month	41.9	59.8	55.5	-2.0	75.5	63.0	109.74	-10.1	130.48	8.6	84.1	-17.2	45.96	43.6	72.39	6.4	63.5	35.0
	Running 12 Month	33.8	20.8	57.4	-0.6	58.9	21.6	102.30	-6.1	120.17	5.7	85.1	-11.2	34.61	13.4	69.00	5.0	50.2	7.9
Tuesday	Current Month	35.8	36.5	50.5	-5.9	70.9	45.1	83.44	-16.6	108.43	9.7	77.0	-23.9	29.87	13.9	54.79	3.2	54.5	10.4
	Year To Date	35.3	30.8	64.5	2.5	54.7	27.6	93.74	-9.3	117.81	4.3	79.6	-13.0	33.07	18.6	75.93	6.9	43.5	11.0
	Running 3 Month	39.4	32.6	60.8	3.3	64.8	28.4	93.71	-12.7	121.39	1.9	77.2	-14.3	36.93	15.7	73.83	5.2	50.0	10.0
	Running 12 Month	35.3	30.8	64.5	2.5	54.7	27.6	93.74	-9.3	117.81	4.3	79.6	-13.0	33.07	18.6	75.93	6.9	43.5	11.0
Wednesday	Current Month	36.1	69.6	47.1	-19.1	76.7	109.6	87.49	-10.9	104.80	6.2	83.5	-16.1	31.59	51.1	49.33	-14.1	64.0	75.9
	Year To Date	35.9	33.9	64.6	2.2	55.6	31.0	90.81	-6.4	117.09	6.5	77.6	-12.1	32.64	25.4	75.68	8.9	43.1	15.1
	Running 3 Month	41.4	56.3	60.6	1.5	68.4	53.9	91.48	-9.3	121.37	7.4	75.4	-15.5	37.88	41.7	73.50	9.0	51.5	30.0
	Running 12 Month	35.9	33.9	64.6	2.2	55.6	31.0	90.81	-6.4	117.09	6.5	77.6	-12.1	32.64	25.4	75.68	8.9	43.1	15.1
Thursday	Current Month	39.8	83.2	38.7	-26.2	103.0	148.4	88.44	-3.8	102.22	11.7	86.5	-13.9	35.21	76.3	39.53	-17.6	89.1	113.9
	Year To Date	40.9	20.8	61.5	2.0	66.4	18.5	93.77	-11.8	118.30	4.9	79.3	-15.9	38.32	6.5	72.77	7.0	52.7	-0.4
	Running 3 Month	44.4	36.0	53.8	-5.4	82.6	43.7	98.26	-10.7	124.26	5.0	79.1	-14.9	43.67	21.5	66.87	-0.6	65.3	22.3
	Running 12 Month	40.9	20.8	61.5	2.0	66.4	18.5	93.77	-11.8	118.30	4.9	79.3	-15.9	38.32	6.5	72.77	7.0	52.7	-0.4
Friday	Current Month	44.0	53.4	35.5	-30.7	123.8	121.5	93.99	-3.5	98.97	6.8	95.0	-9.7	41.31	48.0	35.12	-26.0	117.6	100.0
	Year To Date	59.1	10.2	66.6	-4.4	88.7	15.3	123.51	-0.1	131.21	5.4	94.1	-5.2	72.98	10.0	87.43	0.7	83.5	9.2
	Running 3 Month	60.6	13.7	57.6	-9.8	105.1	26.0	126.35	-1.3	145.87	8.7	86.6	-9.2	76.55	12.2	84.06	-1.9	91.1	14.4
	Running 12 Month	59.1	10.2	66.6	-4.4	88.7	15.3	123.51	-0.1	131.21	5.4	94.1	-5.2	72.98	10.0	87.43	0.7	83.5	9.2
Saturday	Current Month	47.4	39.1	32.7	-35.1	144.9	114.2	93.96	-9.4	104.39	16.3	90.0	-22.1	44.54	26.1	34.16	-24.5	130.4	66.9
	Year To Date	59.9	9.9	66.5	-3.7	90.0	14.0	126.66	1.8	133.39	6.6	95.0	-4.5	75.87	11.9	88.75	2.7	85.5	8.9
	Running 3 Month	66.3	17.1	57.9	-10.9	114.5	31.4	130.48	-0.4	153.93	14.7	84.8	-13.1	86.49	16.7	89.08	2.2	97.1	14.1
	Running 12 Month	59.9	9.9	66.5	-3.7	90.0	14.0	126.66	1.8	133.39	6.6	95.0	-4.5	75.87	11.9	88.75	2.7	85.5	8.9
Weekday/Weekend																			
Weekday (Sun-Thu)	Current Month	35.7	64.9	40.5	-20.9	88.2	108.6	89.74	-5.3	103.45	9.0	86.7	-13.1	32.02	56.2	41.87	-13.8	76.5	81.2
	Year To Date	34.9	21.6	57.8	0.7	60.4	20.7	97.94	-7.0	118.53	4.9	82.6	-11.3	34.17	13.1	68.47	5.7	49.9	7.0
	Running 3 Month	40.2	41.2	53.2	-2.9	75.7	45.5	103.45	-8.1	125.89	5.7	82.2	-13.1	41.62	29.7	66.92	2.6	62.2	26.5
	Running 12 Month	34.9	21.6	57.8	0.7	60.4	20.7	97.94	-7.0	118.53	4.9	82.6	-11.3	34.17	13.1	68.47	5.7	49.9	7.0
Weekend (Fri-Sat)	Current Month	45.7	45.7	34.1	-32.9	133.9	117.0	93.97	-6.8	101.57	11.3	92.5	-16.3	42.93	35.7	34.64	-25.3	123.9	81.6
	Year To Date	59.5	10.0	66.6	-4.0	89.4	14.6	125.10	0.9	132.30	6.0	94.6	-4.8	74.43	11.0	88.09	1.7	84.5	9.1
	Running 3 Month	63.4	15.3	57.7	-10.4	109.8	28.6	128.51	-0.8	149.91	11.7	85.7	-11.2	81.52	14.4	86.57	0.2	94.2	14.2
	Running 12 Month	59.5	10.0	66.6	-4.0	89.4	14.6	125.10	0.9	132.30	6.0	94.6	-4.8	74.43	11.0	88.09	1.7	84.5	9.1
Total	Current Month	38.7	56.7	38.4	-24.8	100.9	108.4	91.72	-5.8	102.95	9.9	89.1	-14.3	35.54	47.5	39.54	-17.4	89.9	78.6
	Year To Date	41.9	16.5	60.3	-0.9	69.5	17.6	109.12	-4.2	122.86	5.2	88.8	-8.9	45.69	11.7	74.06	4.2	61.7	7.2
	Running 3 Month	46.8	29.5	54.5	-5.5	85.9	37.0	113.11	-6.3	133.09	7.3	85.0	-12.6	52.90	21.4	72.47	1.4	73.0	19.7
	Running 12 Month	41.9	16.5	60.3	-0.9	69.5	17.6	109.12	-4.2	122.86	5.2	88.8	-8.9	45.69	11.7	74.06	4.2	61.7	7.2

Tab 7 - Daily Data for the Month

Wingate by Wyndham High Point 3901 Sedgebrook St High Point, NC 27265 Phone: (336) 812-8787
STR # 42232 ChainID: 46797 MgtCo: None Owner: None
For the Month of: December 2023 Date Created: January 17, 2024 Daily Competitive Set Data Excludes Subject Property



Occupancy (%)	Fr	Sa	Su	Mo	Tu	We	Th	Fr	Sa	Su	Mo	Tu	We	Th	Fr	Sa	Su	Mo	Tu	We	Th	Fr	Sa	Su	Mo	Tu	We	Th	Fr	Sa	Su
	December																														
	1	2	3	4	5	6	7	8	9	10	11	12	13	14	15	16	17	18	19	20	21	22	23	24	25	26	27	28	29	30	31
My Property	48.1	48.1	18.5	34.6	45.7	42.0	38.3	50.6	44.4	32.1	53.1	43.2	42.0	48.1	51.9	58.0	35.8	29.6	33.3	33.3	37.0	33.3	51.9	35.8	25.9	21.0	27.2	35.8	35.8	34.6	37.0
Competitive Set	47.5	41.3	37.2	73.2	79.9	76.0	63.1	48.9	40.5	35.5	64.0	77.4	65.5	49.8	41.1	44.9	30.2	40.9	45.1	41.5	34.5	30.0	32.6	28.1	21.9	32.6	36.0	32.6	38.7	30.9	23.4
Index (MPI)	101.4	116.5	49.8	47.2	57.2	55.2	60.6	103.5	109.7	90.5	83.0	55.8	64.1	96.7	126.3	129.2	118.5	72.5	73.9	80.3	107.5	111.1	159.3	127.5	118.3	64.5	75.5	110.0	92.5	112.0	158.2

% Chg																															
My Property	34.5	5.4	87.5	64.7	146.7	70.0	55.0	46.4	9.1	85.7	38.7	25.0	36.0	39.3	75.0	176.5	123.1	60.0	12.5	237.5	400.0	28.6	100.0	70.6	90.9	-5.6	37.5	123.1	107.1	-6.7	150.0
Competitive Set	2.8	-8.8	6.5	7.8	5.8	-10.1	-15.5	-39.4	-37.6	-22.1	3.3	25.4	12.8	0.4	-11.1	-18.5	-4.1	6.7	14.0	0.5	-10.0	-27.3	-27.1	-32.7	-51.4	-16.8	-28.1	-36.8	-10.3	-28.2	-14.1
Index (MPI)	30.8	15.5	76.1	52.8	133.2	89.0	83.4	141.6	74.8	138.4	34.3	-0.3	20.5	38.7	96.8	239.4	132.5	50.0	-1.3	235.8	455.6	76.9	174.5	153.3	292.9	13.6	91.2	252.8	131.0	30.0	190.9

ADR	December																														
	1	2	3	4	5	6	7	8	9	10	11	12	13	14	15	16	17	18	19	20	21	22	23	24	25	26	27	28	29	30	31
My Property	107.30	86.20	87.70	92.50	83.53	89.92	82.79	85.59	90.10	88.34	84.24	82.41	83.46	93.08	101.75	97.33	88.81	87.71	85.93	89.90	85.41	82.66	92.43	92.23	86.90	82.41	87.82	92.05	88.28	107.52	139.53
Competitive Set	103.26	102.32	96.45	107.29	115.67	111.74	103.01	99.90	96.80	98.43	103.64	105.31	105.82	110.91	99.25	114.22	92.28	111.00	98.59	97.77	87.14	85.17	87.02	83.29	88.58	111.72	96.07	102.89	103.11	121.24	96.46
Index (ARI)	103.9	84.2	90.9	86.2	72.2	80.5	80.4	85.7	93.1	89.7	81.3	78.3	78.9	83.9	102.5	85.2	96.2	79.0	87.2	92.0	98.0	97.0	106.2	110.7	98.1	73.8	91.4	89.5	85.6	88.7	144.7

% Chg																															
My Property	20.7	-11.0	12.6	11.1	-7.0	-10.3	-10.0	-12.9	-9.3	-3.9	-17.4	-19.8	-14.7	-5.8	-6.1	-1.9	4.5	-2.3	-19.0	-17.2	3.5	-14.7	-3.8	5.5	-12.0	-14.4	-3.7	11.9	-7.7	-14.0	54.0
Competitive Set	17.2	14.7	4.0	1.5	18.3	9.2	8.1	0.0	-0.3	9.8	6.3	4.8	-3.8	17.0	10.2	39.3	17.2	30.0	22.6	19.0	11.8	2.9	1.0	0.1	7.8	2.9	11.3	20.2	17.7	42.2	14.8
Index (ARI)	3.0	-22.4	8.2	9.4	-21.4	-17.9	-16.8	-12.9	-9.0	-12.5	-22.3	-23.4	-11.3	-19.4	-14.7	-29.6	-10.8	-24.9	-33.9	-30.4	-7.4	-17.2	-4.8	5.4	-18.4	-16.8	-13.5	-6.9	-21.6	-39.5	34.1

RevPAR	December																														
	1	2	3	4	5	6	7	8	9	10	11	12	13	14	15	16	17	18	19	20	21	22	23	24	25	26	27	28	29	30	31
My Property	51.66	41.50	16.24	31.97	38.16	37.75	31.69	43.33	40.05	28.36	44.72	35.61	35.03	44.82	52.76	56.48	31.80	25.99	28.64	29.97	31.63	27.55	47.93	33.02	22.53	17.30	23.85	32.96	31.61	37.17	51.68
Competitive Set	49.04	42.30	35.83	78.52	92.40	84.90	65.03	48.83	39.21	34.92	66.29	81.48	69.35	55.22	40.75	51.28	27.88	45.35	44.47	40.56	30.03	25.55	28.33	23.39	19.41	36.37	34.55	33.49	39.93	37.40	22.57
Index (RGI)	105.4	98.1	45.3	40.7	41.3	44.5	48.7	88.7	102.1	81.2	67.5	43.7	50.5	81.2	129.5	110.1	114.1	57.3	64.4	73.9	105.3	107.8	169.2	141.2	116.1	47.6	69.0	98.4	79.2	99.4	228.9

% Chg																															
My Property	62.3	-6.1	111.1	82.9	129.3	52.4	39.4	27.5	-1.1	78.4	14.6	0.3	16.1	31.3	64.4	171.2	133.2	56.3	-8.9	179.6	417.6	9.6	92.3	80.0	67.9	-19.1	32.4	149.7	91.2	-19.7	285.0
Competitive Set	20.5	4.6	10.7	9.4	25.1	-1.7	-8.6	-39.4	-37.8	-14.5	9.9	31.4	8.6	17.5	-2.0	13.5	12.4	38.7	39.7	19.6	0.6	-25.2	-26.4	-32.6	-47.6	-14.5	-19.9	-24.0	5.5	2.1	-1.3
Index (RGI)	34.7	-10.3	90.6	67.2	83.3	55.1	52.6	110.3	59.1	108.7	4.3	-23.7	6.9	11.7	67.8	139.0	107.4	12.7	-34.8	133.8	414.5	46.5	161.3	167.0	220.7	-5.5	65.3	228.6	81.2	-21.3	290.2

2024 © CoStar Group. This STR Report is a publication of STR, LLC and STR Global, Ltd., CoStar Group companies, and is intended solely for use by paid subscribers. The information in the STR Report is provided on an "as is" and "as available" basis and should not be construed as investment, tax, accounting or legal advice. Reproduction or distribution of this STR Report, in whole or part, without written permission is prohibited and subject to legal action. If you have received this report and are NOT a subscriber to this STR Report, please contact us immediately. Source: 2024 STR, LLC / STR Global, Ltd. trading as "STR".



How can we assist you?

Glossary:

For all STR definitions, please click here or visit www.str.com/data-insights/resources/glossary

Frequently Asked Questions (FAQ):

For all STR FAQs, please click here or visit www.str.com/data-insights/resources/FAQ

For additional support, please [contact](#) your regional office.

For the latest in industry news, visit HotelNewsNow.com.

To learn more about the Hotel Data Conference, visit HotelDataConference.com.