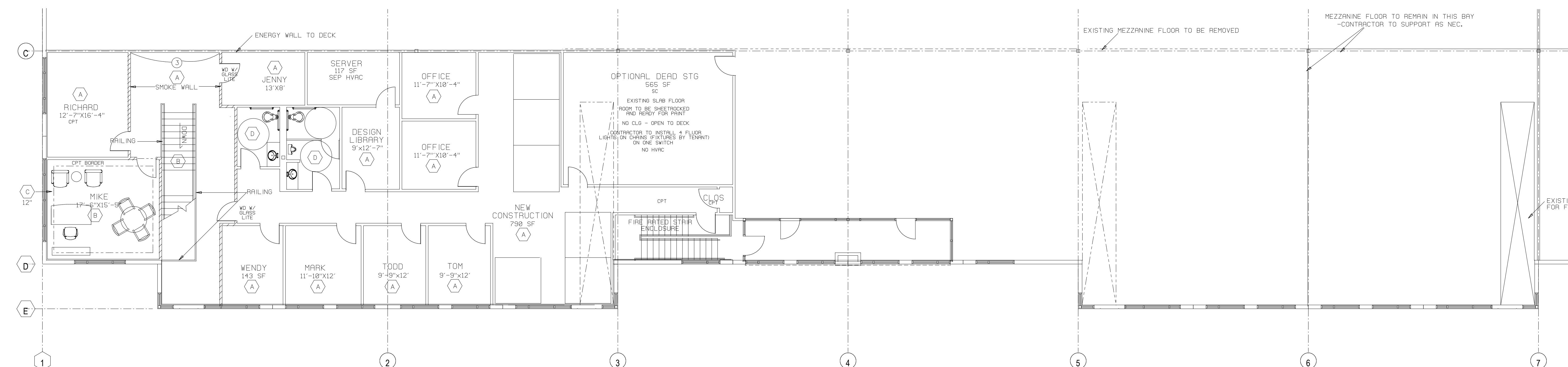


FLOOR PLAN - MAIN LEVEL

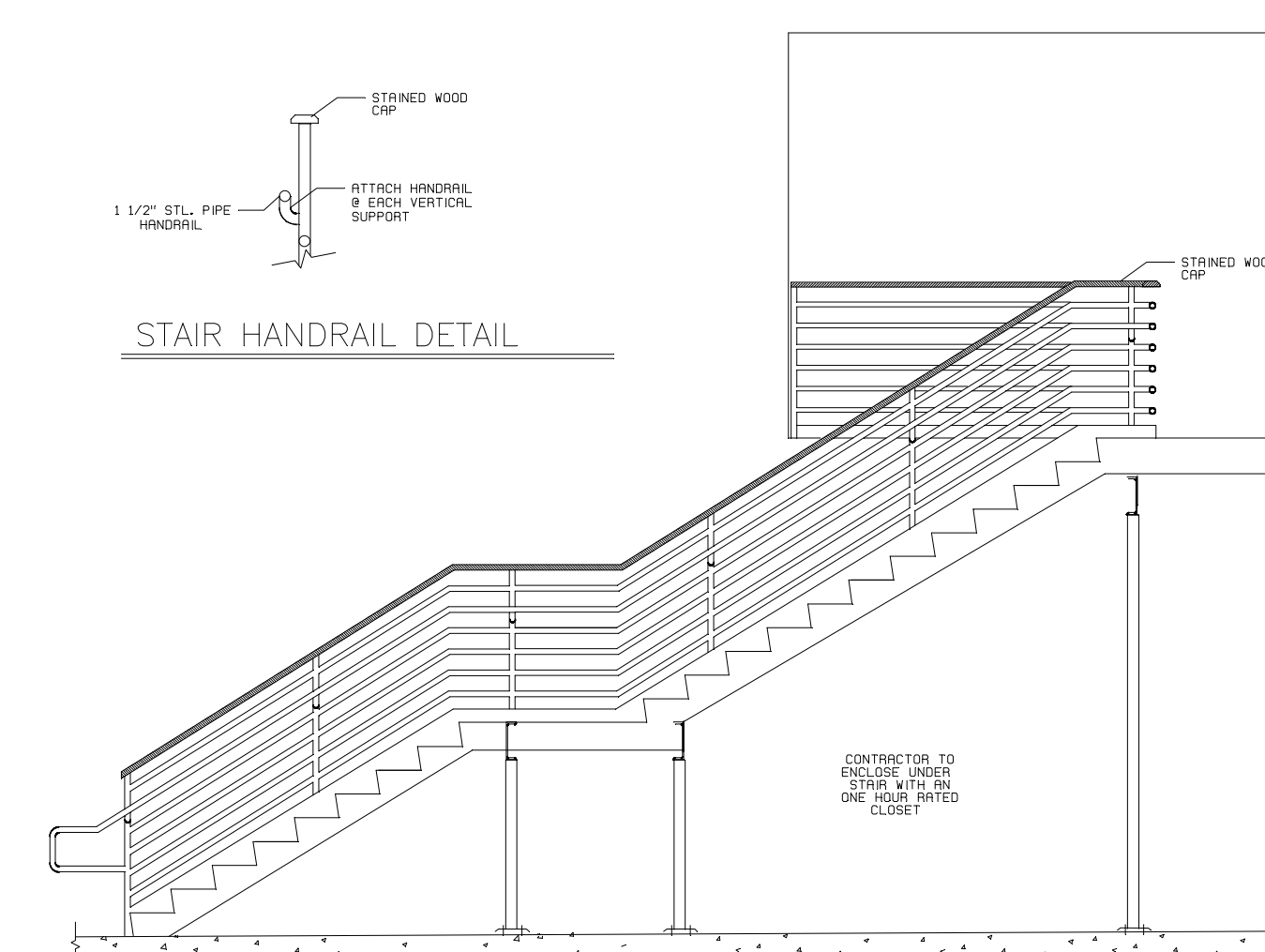
3906 SF OFFICE

NOTE: ALL STALLS TO BE BAKED ENAMEL METAL STALLS AND NOT LAMINATE



FLOOR PLAN - MEZZANINE

3000 SF OFFICE*
*DOES NOT INCLUDE 565 SF STORAGE



3) STAIR CONCEPT

4) FINISH SCHEDULE

WALLCOVERING:

- 1 MEN'S RR WALLCOVERING:
WOLF GORDON, BLDG STD 6, #BSB41908 (PAG
TYPE 1, 15 OZ, 54", REVERSE RANDOM MATCH
- 2 WOMEN'S RR WALLCOVERING:
SEABROOK CONTRACT, CAREY LIND, SASARIDO
#DP0874W "DERVISH", 54"W, TYPE 2

PAINT: (USE OF PT 1 & PT2 TO BE NOTED ON FINISH SCHEDULE)

- ① PAINT 1: - SHERWIN WILLIAMS SW7046 "ANONYMOUS", SATIN FINISH
② PAINT 2: - SHERWIN WILLIAMS SW7045 "INTELLECTUAL GRAY", SATIN FINISH
③ PAINT 3: - SHERWIN WILLIAMS SW6321 "RED BAY", FLAT FINISH

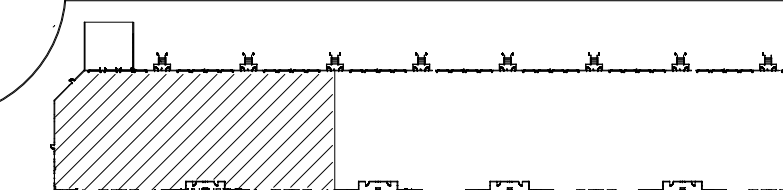
LAMINATE:

- L1 OFFICE RR CABINETRY: WILSONART 4888-38 "RUSTIC SLATE"
- L2 BREAK RM UPPER/BASE CABINETRY: WILSONART 7923-07 "VERSAILLES ANIGRE"
- L3 BREAK ROOM COUNTERTOP: WILSONART 4882-38 "OILED SOAPSTONE"

FLOORING:

- (A) LEVEL LOOP CARPET: (MINI CARPET) SHW CONTRACT GROUP
BRODLODGE, TONE S412 "CHIMNEY BLACK",
S1500 COLOR NUMBER, MULTI-LEVEL PATTERN
LOOP, 4'X2' PATTERN REPEAT: 1/8 GRUGE, 30 OZ.
100% STUDED DYE W/CLASSICBAC
SECONDARY BRCKING W/SF
SHW SOLI PROTECTION
- COVE BASE 2:
- (B) LEVEL LOOP CARPET: (SECONDARY CARPET) SHW CONTRACT GROUP
BRODLODGE, TINT S511 "CHIMNEY BLACK",
S1500 COLOR NUMBER, PATTERN LODE, "S-625",
REPEAT: 1/8 GRUGE, 24 OZ., 100% STUDED DYE
W/CLASSICBAC SECONDARY BRCKING W/SF
SHW SOLI PROTECTION
- COVE BASE 2:
- (C) OUT C/P CARPET: (BORDER CARPET) SHW CONTRACT GROUP
BRODLODGE, DESIGN SERIES V30, STYLE S432
TIGGLE, 52546 COLOR NUMBER, SOLID CUT
CONSTRUCTION, 1/8 GRUGE, 30 OZ., 100% PIECED
DYE, NYLON FIBER, 100% STUDED DYE
W/CLASSICBAC SECONDARY BRCKING W/SF
SHW SOLI PROTECTION
- COVE BASE 2:
- (D) VINYL TILE: CENTIVA, URBAN LOST SOLITUDE M/L-1104-E,
SATIN SURFACE, SB, TILES TO BE QUARTER TURN INS
ON A DIAGONAL
- COVE BASE 1:
- (E) VINYL TILE: CENTIVA EVENT STONE NS-R-72-E,
CANYON GRAY, RK SURFACE, SE EDGE, TILES TO BE
QUARTER TURN INSTALLED BUT STRAIGHT TO THE
R
- COVE BASE 2:
- (F) VCT: ARMSTRONG IMPERIAL TEXTURE STD EXCELON
5192 "FIELD GRAY", 12"X12"X1/8"
- (G) SEALED CONCRETE (LPOUTDOX (EVISTON))
COVE BASE 2, BUT NOT IN WHSE
- MISCELLANEOUS:
- STALLS: GLOBAL POWER COATED STEEL #209 "DIRK KHAKI"
- COVE BASE 1: JOHNSONITE MILLWORK WALL BASE "AMBASSADOR"
#140 BLACK (40D QUARTER ROUND IF NEC)
#140-K0-K
- COVE BASE 2: JOHNSONITE 1/4 RUBBER 1/8" COVE BASE #140 BLACK
- DOORS: BLDG STD. MINWAX MAHOGANY
- DOOR FRAMES: ALL DOOR FRAMES TO MATCH THE COLOR
OF THE ADJACENT WALL BUT IN SEMI-GLOSS
FINISH PATT.

SITE PLAN



1ST FLOOR OFFICE:	3,906
2ND FLOOR OFFICE:	3,259
WHSE OFFICE:	150
WAREHOUSE:	19,368
<hr/>	
TOTAL:	26,683