

STR # 42232 / Created January 22, 2025



# Monthly STAR Report : Wingate by Wyndham High Point

For the Month of: December 2024

Currency: US Dollar / Competitive Set Data Excludes Subject Property

Table Of Contents	1
Monthly Performance at a Glance	2
STAR Summary	3
Competitive Set Report	4
Response Report	5
Day of Week & Weekday/Weekend	6
Daily Data for the Month	7
Help	8

Corporate North American Headquarters  
T: +1 (615) 824 8664  
[support@str.com](mailto:support@str.com)   [www.str.com](http://www.str.com)

International Headquarters  
T: +44 (0) 207 922 1930  
[hotelinfo@str.com](mailto:hotelinfo@str.com)   [www.str.com](http://www.str.com)

2025 © CoStar Group. This STR Report is a publication of STR, LLC and STR Global, Ltd., CoStar Group companies, and is intended solely for use by paid subscribers. The information in the STR Report is provided on an "as is" and "as available" basis and should not be construed as investment, tax, accounting or legal advice. Reproduction or distribution of this STR Report, in whole or part, without written permission is prohibited and subject to legal action. If you have received this report and are NOT a subscriber to this STR Report, please contact us immediately. Source: 2025 STR, LLC / STR Global, Ltd. trading as "STR".

Tab 2 - Monthly Performance at a Glance - My Property vs. Competitive Set

Wingate by Wyndham High Point    3901 Sedgebrook St    High Point, NC 27265    Phone: (336) 812-8787  
STR # 42232    ChainID: 46797    MgtCo: None    Owner: None  
For the Month of: December 2024    Date Created: January 22, 2025    Monthly Competitive Set Data Excludes Subject Property

December 2024									
	Occupancy (%)			ADR			RevPAR		
	My Prop	Comp Set	Index (MPI)	My Prop	Comp Set	Index (ARI)	My Prop	Comp Set	Index (RGI)
Current Month	16.2	47.9	33.9	93.53	101.35	92.3	15.16	48.51	31.3
Year To Date	37.6	65.1	57.8	114.78	122.46	93.7	43.17	79.75	54.1
Running 3 Month	31.5	62.5	50.4	128.16	128.48	99.7	40.42	80.36	50.3
Running 12 Month	37.6	65.1	57.8	114.78	122.46	93.7	43.17	79.75	54.1

December 2024 vs. 2023 Percent Change (%)									
	Occupancy			ADR			RevPAR		
	My Prop	Comp Set	Index (MPI)	My Prop	Comp Set	Index (ARI)	My Prop	Comp Set	Index (RGI)
Current Month	-58.2	24.6	-66.4	2.0	-1.6	3.6	-57.3	22.7	-65.2
Year To Date	-10.1	8.0	-16.8	5.1	-0.3	5.5	-5.5	7.7	-12.2
Running 3 Month	-32.6	14.9	-41.3	13.3	-3.5	17.4	-23.6	10.9	-31.1
Running 12 Month	-10.1	8.0	-16.8	5.1	-0.3	5.5	-5.5	7.7	-12.2

2025 © CoStar Group. This STR Report is a publication of STR, LLC and STR Global, Ltd., CoStar Group companies, and is intended solely for use by paid subscribers. The information in the STR Report is provided on an “as is” and “as available” basis and should not be construed as investment, tax, accounting or legal advice. Reproduction or distribution of this STR Report, in whole or part, without written permission is prohibited and subject to legal action. If you have received this report and are NOT a subscriber to this STR Report, please contact us immediately. Source: 2025 STR, LLC / STR Global, Ltd. trading as “STR”.

Tab 3 - STAR Summary - My Property vs. Comp Set and Industry Segments

Wingate by Wyndham High Point    3901 Sedgebrook St    High Point, NC 27265    Phone: (336) 812-8787  
STR # 42232    ChainID: 46797    MgtCo: None    Owner: None  
For the Month of: December 2024    Date Created: January 22, 2025    Monthly Competitive Set Data Excludes Subject Property

Wingate by Wyndham High Point
Market: Greensboro/Winston Salem, NC
Market Class: Midscale Class
Submarket: Burlington/High Point, NC
Submarket Scale: Midscale Chains
Competitive Set: Competitors

Occupancy (%)							
Current Month	% Chg	Year to Date	% Chg	Running 3 Month	% Chg	Running 12 Month	% Chg
16.2	-58.2	37.6	-10.1	31.5	-32.6	37.6	-10.1
47.1	4.1	59.8	2.6	57.6	4.5	59.8	2.6
42.0	-9.6	55.7	-0.1	52.7	-2.5	55.7	-0.1
47.3	-3.6	58.8	-0.4	56.0	-0.6	58.8	-0.4
48.4	2.7	62.5	1.4	59.8	2.9	62.5	1.4
47.9	24.6	65.1	8.0	62.5	14.9	65.1	8.0

Supply			
Month % Chg	YTD % Chg	Run 3 Mon % Chg	Run 12 Mon % Chg
0.0	0.3	0.0	0.3
2.1	1.1	1.8	1.1
3.0	-1.4	1.0	-1.4
0.3	1.4	0.3	1.4
0.0	2.9	0.0	2.9
0.0	0.0	0.0	0.0

Wingate by Wyndham High Point
Market: Greensboro/Winston Salem, NC
Market Class: Midscale Class
Submarket: Burlington/High Point, NC
Submarket Scale: Midscale Chains
Competitive Set: Competitors

Average Daily Rate							
Current Month	% Chg	Year to Date	% Chg	Running 3 Month	% Chg	Running 12 Month	% Chg
93.53	2.0	114.78	5.1	128.16	13.3	114.78	5.1
96.70	2.5	114.40	1.4	117.91	0.8	114.40	1.4
74.16	3.5	86.80	2.1	89.76	3.6	86.80	2.1
90.80	5.0	105.18	3.8	106.67	3.7	105.18	3.8
109.39	5.6	125.83	4.0	128.46	4.3	125.83	4.0
101.35	-1.6	122.46	-0.3	128.48	-3.5	122.46	-0.3

Demand			
Month % Chg	YTD % Chg	Run 3 Mon % Chg	Run 12 Mon % Chg
-58.2	-9.9	-32.6	-9.9
6.2	3.7	6.4	3.7
-6.8	-1.5	-1.5	-1.5
-3.3	0.9	-0.3	0.9
2.7	4.3	2.9	4.3
24.6	8.0	14.9	8.0

Wingate by Wyndham High Point
Market: Greensboro/Winston Salem, NC
Market Class: Midscale Class
Submarket: Burlington/High Point, NC
Submarket Scale: Midscale Chains
Competitive Set: Competitors

RevPAR							
Current Month	% Chg	Year to Date	% Chg	Running 3 Month	% Chg	Running 12 Month	% Chg
15.16	-57.3	43.17	-5.5	40.42	-23.6	43.17	-5.5
45.59	6.7	68.36	4.0	67.97	5.3	68.36	4.0
31.16	-6.4	48.31	2.0	47.31	1.0	48.31	2.0
42.97	1.2	61.88	3.3	59.77	3.1	61.88	3.3
52.95	8.5	78.70	5.5	76.88	7.4	78.70	5.5
48.51	22.7	79.75	7.7	80.36	10.9	79.75	7.7

Revenue			
Month % Chg	YTD % Chg	Run 3 Mon % Chg	Run 12 Mon % Chg
-57.3	-5.2	-23.6	-5.2
8.9	5.1	7.2	5.1
-3.6	0.5	2.0	0.5
1.5	4.7	3.4	4.7
8.5	8.5	7.4	8.5
22.7	7.7	10.9	7.7

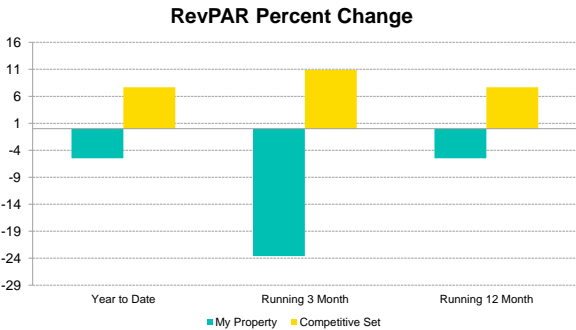
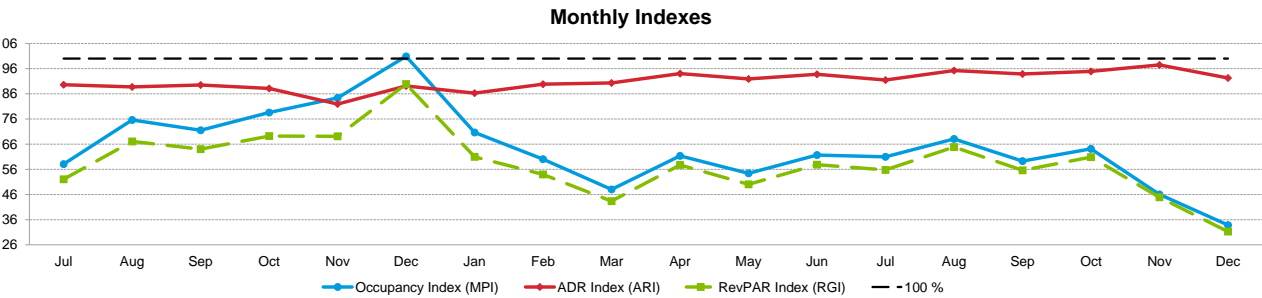
Market: Greensboro/Winston Salem, NC
Market Class: Midscale Class
Submarket: Burlington/High Point, NC
Submarket Scale: Midscale Chains
Competitive Set: Competitors

Census/Sample - Properties & Rooms					
Census		Sample		Sample %	
Properties	Rooms	Properties	Rooms	Rooms	
230	21902	176	18912	86.3	
34	3022	27	2560	84.7	
92	6090	61	4782	78.5	
35	2780	35	2780	100.0	
5	470	5	470	100.0	

2025 © CoStar Group. This STR Report is a publication of STR, LLC and STR Global, Ltd., CoStar Group companies, and is intended solely for use by paid subscribers. The information in the STR Report is provided on an "as is" and "as available" basis and should not be construed as investment, tax, accounting or legal advice. Reproduction or distribution of this STR Report, in whole or part, without written permission is prohibited and subject to legal action. If you have received this report and are NOT a subscriber to this STR Report, please contact us immediately. Source: 2025 STR, LLC / STR Global, Ltd. trading as "STR".

Tab 4 - Competitive Set Report

Wingate by Wyndham High Point    3901 Sedgebrook St    High Point, NC 27265    Phone: (336) 812-8787  
STR # 42232    ChainID: 46797    MgtCo: None    Owner: None  
For the Month of: December 2024    Date Created: January 22, 2025    Monthly Competitive Set Data Excludes Subject Property



Occupancy (%)	2023						2024											
	Jul	Aug	Sep	Oct	Nov	Dec	Jan	Feb	Mar	Apr	May	Jun	Jul	Aug	Sep	Oct	Nov	Dec
My Property	38.0	47.9	44.4	52.8	48.8	38.7	31.9	39.9	34.8	48.8	33.8	42.8	41.8	45.6	37.8	49.5	28.8	16.2
Competitive Set	65.4	63.3	62.2	67.2	57.9	38.4	45.2	66.4	72.4	79.5	62.1	69.4	68.5	67.0	63.8	77.2	62.6	47.9
Index (MPI)	58.1	75.6	71.5	78.6	84.4	100.9	70.6	60.0	48.0	61.4	54.4	61.7	61.0	68.1	59.3	64.1	46.0	33.9
Rank	6 of 6	6 of 6	6 of 6	6 of 6	5 of 6	4 of 6	5 of 6	6 of 6	6 of 6	6 of 6	6 of 6	6 of 6	6 of 6	6 of 6	6 of 6	6 of 6	6 of 6	6 of 6

% Chg																		
My Property	16.8	25.5	36.0	1.8	54.2	56.7	-11.3	21.4	-4.6	14.4	-8.2	-7.6	10.1	-4.7	-14.9	-6.2	-41.0	-58.2
Competitive Set	-3.9	-10.3	-5.3	-1.4	8.1	-24.8	-7.3	10.3	10.5	12.0	6.2	5.8	4.9	5.9	2.7	14.9	8.1	24.6
Index (MPI)	21.6	39.9	43.6	3.2	42.6	108.4	-4.3	10.1	-13.7	2.1	-13.5	-12.6	5.0	-10.0	-17.1	-18.4	-45.4	-66.4
Rank	3 of 6	1 of 6	1 of 6	3 of 6	2 of 6	1 of 6	3 of 6	3 of 6	4 of 6	2 of 6	5 of 6	5 of 6	2 of 6	5 of 6	6 of 6	6 of 6	6 of 6	6 of 6

Year To Date			Running 3 Month			Running 12 Month		
2022	2023	2024	2022	2023	2024	2022	2023	2024
35.9	41.8	37.6	36.1	46.8	31.5	35.9	41.8	37.6
60.8	60.3	65.1	57.6	54.5	62.5	60.8	60.3	65.1
59.1	69.4	57.8	62.7	85.9	50.4	59.1	69.4	57.8
6 of 6	6 of 6	6 of 6	6 of 6	5 of 6	6 of 6	6 of 6	6 of 6	6 of 6

ADR	2023						2024											
	Jul	Aug	Sep	Oct	Nov	Dec	Jan	Feb	Mar	Apr	May	Jun	Jul	Aug	Sep	Oct	Nov	Dec
My Property	98.81	99.66	104.68	140.72	99.84	91.72	90.63	98.16	101.89	148.24	109.97	109.93	111.02	111.42	106.09	150.12	109.29	93.53
Competitive Set	110.26	112.30	116.93	159.70	121.86	102.95	105.04	109.26	112.85	157.62	119.69	117.25	121.35	116.99	113.04	158.14	112.12	101.35
Index (ARI)	89.6	88.7	89.5	88.1	81.9	89.1	86.3	89.8	90.3	94.1	91.9	93.8	91.5	95.2	93.9	94.9	97.5	92.3
Rank	5 of 6	5 of 6	5 of 6	4 of 6	5 of 6	5 of 6	5 of 6	5 of 6	5 of 6	5 of 6	5 of 6	5 of 6	4 of 6	4 of 6	4 of 6	4 of 6	4 of 6	5 of 6

% Chg																		
My Property	-10.7	-15.1	-6.0	0.7	-6.8	-5.8	58.6	-14.6	-10.6	-2.8	-3.5	-0.4	12.4	11.8	1.3	6.7	9.5	2.0
Competitive Set	-3.1	-3.3	3.4	1.3	11.0	9.9	11.2	1.2	-10.5	-3.3	2.4	-1.8	10.1	4.2	-3.3	-1.0	-8.0	-1.6
Index (ARI)	-7.8	-12.2	-9.1	-0.6	-16.0	-14.3	42.6	-15.6	-0.1	0.5	-5.8	1.4	2.1	7.3	4.8	7.7	19.0	3.6
Rank	5 of 6	6 of 6	6 of 6	3 of 6	6 of 6	6 of 6	1 of 6	6 of 6	3 of 6	3 of 6	6 of 6	3 of 6	4 of 6	3 of 6	2 of 6	2 of 6	1 of 6	2 of 6

Year To Date			Running 3 Month			Running 12 Month		
2022	2023	2024	2022	2023	2024	2022	2023	2024
21.8	16.5	-10.1	15.8	29.5	-32.6	21.8	16.5	-10.1
22.0	-0.9	8.0	11.8	-5.5	14.9	22.0	-0.9	8.0
-0.2	17.5	-16.8	3.6	37.0	-41.3	-0.2	17.5	-16.8
3 of 6	1 of 6	6 of 6	3 of 6	2 of 6	6 of 6	3 of 6	1 of 6	6 of 6

RevPAR	2023						2024											
	Jul	Aug	Sep	Oct	Nov	Dec	Jan	Feb	Mar	Apr	May	Jun	Jul	Aug	Sep	Oct	Nov	Dec
My Property	37.50	47.71	46.52	74.25	48.77	35.54	28.95	39.15	35.43	72.35	37.14	47.05	46.38	50.85	40.12	74.31	31.48	15.16
Competitive Set	72.06	71.09	72.69	107.26	70.55	39.54	47.49	72.58	81.69	125.37	74.27	81.35	83.17	78.41	72.14	122.09	70.17	48.51
Index (RGI)	52.0	67.1	64.0	69.2	69.1	89.9	61.0	53.9	43.4	57.7	50.0	57.8	55.8	64.8	55.6	60.9	44.9	31.3
Rank	6 of 6	6 of 6	6 of 6	5 of 6	6 of 6	5 of 6	6 of 6	6 of 6	6 of 6	6 of 6	6 of 6	6 of 6	6 of 6	6 of 6	6 of 6	6 of 6	6 of 6	6 of 6

Year To Date			Running 3 Month			Running 12 Month		
2022	2023	2024	2022	2023	2024	2022	2023	2024
113.86	109.17	114.78	120.67	113.11	128.16	113.86	109.17	114.78
116.83	122.86	122.46	124.04	133.09	128.48	116.83	122.86	122.46
97.5	88.9	93.7	97.3	85.0	99.7	97.5	88.9	93.7
4 of 6	5 of 6	4 of 6	4 of 6	5 of 6	4 of 6	4 of 6	5 of 6	4 of 6

% Chg																		
My Property	4.3	6.5	27.9	2.5	43.6	47.5	40.7	3.7	-14.7	11.2	-11.5	-7.9	23.7	6.6	-13.8	0.1	-35.4	-57.3
Competitive Set	-6.9	-13.3	-2.0	-0.1	20.0	-17.4	3.1	11.6	-1.1	8.3	8.8	4.0	15.4	10.3	-0.8	13.8	-0.5	22.7
Index (RGI)	12.0	22.8	30.6	2.6	19.7	78.6	36.5	-7.1	-13.7	2.6	-18.6	-11.4	7.2	-3.4	-13.1	-12.1	-35.1	-65.2
Rank	2 of 6	2 of 6	1 of 6	3 of 6	3 of 6	2 of 6	2 of 6	4 of 6	5 of 6	2 of 6	5 of 6	5 of 6	3 of 6	4 of 6	6 of 6	5 of 6	6 of 6	6 of 6

Year To Date			Running 3 Month			Running 12 Month		
2022	2023	2024	2022	2023	2024	2022	2023	2024
3.5	-4.1	5.1	5.7	-6.3	13.3	3.5	-4.1	5.1
16.9	5.2	-0.3	11.4	7.3	-3.5	16.9	5.2	-0.3
-11.4	-8.8	5.5	-5.2	-12.6	17.4	-11.4	-8.8	5.5
6 of 6	6 of 6	2 of 6	5 of 6	6 of 6	1 of 6	6 of 6	6 of 6	2 of 6

Tab 5 - Response Report

Wingate by Wyndham High Point      3901 Sedgebrook St      High Point, NC 27265      Phone: (336) 812-8787  
STR # 42232      ChainID: 46797      MgtCo: None      Owner: None  
For the Month of: December 2024      Date Created: January 22, 2025

**This Year**  
Dec 24th - Christmas Eve  
Dec 25th - Christmas Day  
Dec 26th - First Day of Kwanzaa  
Dec 26th - First Day of Hanukkah  
Dec 31st - New Year's Eve

December 2024 (This Year)						
Sun	Mon	Tue	Wed	Thu	Fri	Sat
1	2	3	4	5	6	7
8	9	10	11	12	13	14
15	16	17	18	19	20	21
22	23	24	25	26	27	28
29	30	31				

December 2023 (Last Year)						
Sun	Mon	Tue	Wed	Thu	Fri	Sat
					1	2
3	4	5	6	7	8	9
10	11	12	13	14	15	16
17	18	19	20	21	22	23
24	25	26	27	28	29	30
31						

**Last Year**  
Dec 8th - First Day of Hanukkah  
Dec 24th - Christmas Eve  
Dec 25th - Christmas Day  
Dec 26th - First Day of Kwanzaa  
Dec 31st - New Year's Eve

STR#	Name	City, State	Zip	Phone	Rooms	Open Date
42232	Wingate by Wyndham High Point	High Point, NC	27265	(336) 812-8787	81	200010
32728	Hampton by Hilton Inn Greensboro-Airport	Greensboro, NC	27409	(336) 605-5500	125	199606
33651	Four Points by Sheraton Greensboro Airport	Greensboro, NC	27409	(336) 882-6666	112	199703
37600	Clarion Pointe Greensboro Airport	Greensboro, NC	27409	(336) 454-0333	60	199901
48038	Fairfield Inn Greensboro Airport	Greensboro, NC	27409	(336) 841-0140	78	200304
58872	Holiday Inn Express & Suites Greensboro - Airport	Greensboro, NC	27409-9400	(336) 882-0004	95	200906
					551	

2023												2024											
Jan	Feb	Mar	Apr	May	Jun	Jul	Aug	Sep	Oct	Nov	Dec	Jan	Feb	Mar	Apr	May	Jun	Jul	Aug	Sep	Oct	Nov	Dec
●	●	●	●	●	●	●	●	●	●	●	●	●	●	●	●	●	●	●	●	●	●	●	●
●	●	●	●	●	●	●	●	●	●	●	●	●	●	●	●	●	●	●	●	●	●	●	●
●	●	●	●	●	●	●	●	●	●	○	●	●	●	●	●	●	●	●	●	●	●	●	●
●	●	●	●	●	●	●	●	●	●	●	●	●	●	●	●	●	●	●	●	●	●	●	●
●	●	●	●	●	●	●	●	●	●	●	●	●	●	●	●	●	●	●	●	●	●	●	●
●	●	●	●	●	●	●	●	●	●	●	●	●	●	●	●	●	●	●	●	●	●	●	●
●	●	●	●	●	●	●	●	●	●	●	●	●	●	●	●	●	●	●	●	●	●	●	●

Data received:  
○ = Monthly Only  
● = Monthly & Daily

Tab 6 - Day of Week and Weekday/Weekend Report

Wingate by Wyndham High Point

3901 Sedgebrook St

High Point, NC 27265

Phone: (336) 812-8787

STR # 42232

ChainID: 46797

MgtCo: None

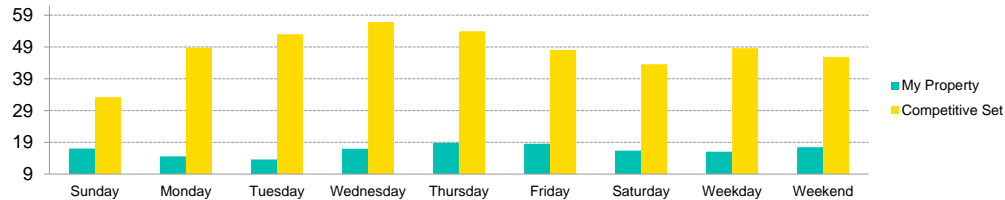
Owner: None

For the Month of: December 2024

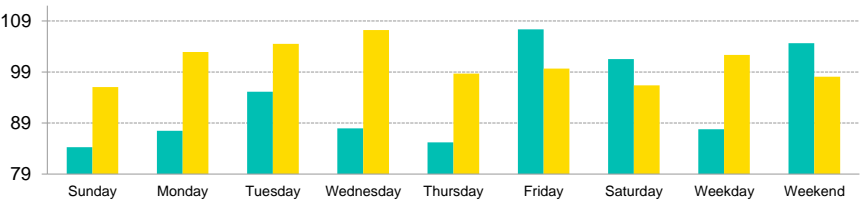
Date Created: January 22, 2025

Monthly Competitive Set Data Excludes Subject Property

Current Month Occupancy



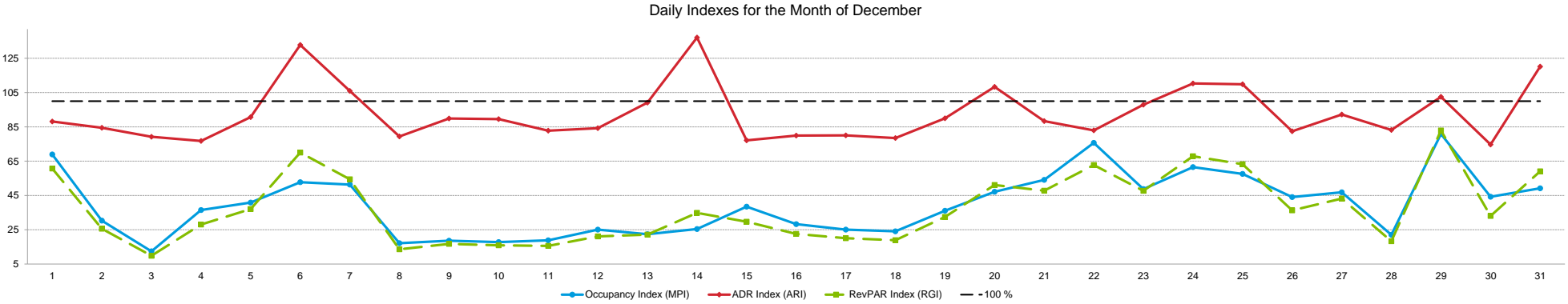
Current Month ADR



		Occupancy (%)						Average Daily Rate						RevPAR					
Day of Week	Time Period	My Property		Competitive Set		Index (MPI)		My Property		Competitive Set		Index (ARI)		My Property		Competitive Set		Index (RGI)	
			% Chg		% Chg		% Chg		% Chg		% Chg		% Chg		% Chg		% Chg		% Chg
Sunday	Current Month	17.0	-46.5	33.2	25.2	51.3	-57.3	84.28	-16.5	96.03	2.5	87.8	-18.6	14.36	-55.4	31.92	28.3	45.0	-65.2
	Year To Date	29.3	0.0	45.6	10.9	64.2	-9.8	115.22	4.7	117.95	-1.7	97.7	6.5	33.76	4.7	53.81	9.0	62.7	-4.0
	Running 3 Month	28.2	-21.6	46.1	26.5	61.2	-38.0	133.84	10.6	133.72	-1.4	100.1	12.2	37.75	-13.3	61.58	24.8	61.3	-30.5
	Running 12 Month	29.3	0.0	45.6	10.9	64.2	-9.8	115.22	4.7	117.95	-1.7	97.7	6.5	33.76	4.7	53.81	9.0	62.7	-4.0
Monday	Current Month	14.6	-59.3	48.8	13.3	29.9	-64.1	87.48	0.2	102.92	-1.8	85.0	2.0	12.74	-59.2	50.19	11.3	25.4	-63.4
	Year To Date	29.5	-13.4	61.2	6.6	48.2	-18.8	106.74	5.4	118.65	-1.3	90.0	6.8	31.50	-8.7	72.61	5.2	43.4	-13.3
	Running 3 Month	28.4	-32.8	59.7	7.6	47.6	-37.5	121.50	11.7	125.01	-4.2	97.2	16.6	34.50	-24.9	74.60	3.0	46.2	-27.1
	Running 12 Month	29.5	-13.4	61.2	6.6	48.2	-18.8	106.74	5.4	118.65	-1.3	90.0	6.8	31.50	-8.7	72.61	5.2	43.4	-13.3
Tuesday	Current Month	13.6	-62.1	53.0	4.9	25.6	-63.8	95.13	14.0	104.51	-3.6	91.0	18.3	12.92	-56.8	55.41	1.1	23.3	-57.2
	Year To Date	31.7	-10.2	68.9	6.9	46.0	-16.0	103.16	10.4	118.89	0.9	86.8	9.4	32.70	-0.9	81.89	7.8	39.9	-8.1
	Running 3 Month	26.1	-33.6	66.2	8.8	39.5	-39.0	102.93	9.6	116.52	-4.0	88.3	14.2	26.87	-27.2	77.09	4.4	34.9	-30.3
	Running 12 Month	31.7	-10.2	68.9	6.9	46.0	-16.0	103.16	10.4	118.89	0.9	86.8	9.4	32.70	-0.9	81.89	7.8	39.9	-8.1
Wednesday	Current Month	17.0	-53.0	56.8	20.7	29.9	-61.0	87.95	0.5	107.23	2.3	82.0	-1.7	14.93	-52.7	60.91	23.5	24.5	-61.7
	Year To Date	32.1	-10.7	69.6	7.6	46.2	-17.0	101.16	11.6	118.36	1.1	85.5	10.4	32.47	-0.3	82.32	8.8	39.4	-8.4
	Running 3 Month	28.7	-30.4	66.6	9.9	43.1	-36.7	105.26	14.5	118.17	-2.6	89.1	17.6	30.19	-20.3	78.67	7.0	38.4	-25.5
	Running 12 Month	32.1	-10.7	69.6	7.6	46.2	-17.0	101.16	11.6	118.36	1.1	85.5	10.4	32.47	-0.3	82.32	8.8	39.4	-8.4
Thursday	Current Month	18.8	-52.7	53.9	39.5	34.9	-66.1	85.20	-3.7	98.70	-3.4	86.3	-0.2	16.04	-54.4	53.24	34.7	30.1	-66.2
	Year To Date	34.9	-14.3	65.9	7.1	52.9	-20.0	104.51	9.0	118.83	0.5	87.9	8.5	36.42	-6.6	78.29	7.6	46.5	-13.2
	Running 3 Month	29.2	-34.1	62.7	16.5	46.5	-43.4	113.84	15.4	118.80	-4.4	95.8	20.7	33.19	-24.0	74.45	11.3	44.6	-31.7
	Running 12 Month	34.9	-14.3	65.9	7.1	52.9	-20.0	104.51	9.0	118.83	0.5	87.9	8.5	36.42	-6.6	78.29	7.6	46.5	-13.2
Friday	Current Month	18.5	-57.9	48.1	35.5	38.5	-68.9	107.37	14.2	99.66	0.7	107.7	13.4	19.88	-51.9	47.92	36.4	41.5	-64.7
	Year To Date	52.8	-10.6	73.2	9.9	72.1	-18.7	124.37	0.7	130.70	-0.4	95.2	1.1	65.64	-10.0	95.72	9.5	68.6	-17.8
	Running 3 Month	37.4	-37.8	68.1	18.1	55.0	-47.3	146.97	15.4	142.28	-2.5	103.3	18.3	54.99	-28.2	96.85	15.2	56.8	-37.6
	Running 12 Month	52.8	-10.6	73.2	9.9	72.1	-18.7	124.37	0.7	130.70	-0.4	95.2	1.1	65.64	-10.0	95.72	9.5	68.6	-17.8
Saturday	Current Month	16.4	-65.5	43.6	33.1	37.5	-74.1	101.54	8.1	96.37	-7.7	105.4	17.1	16.61	-62.7	41.98	22.9	39.6	-69.7
	Year To Date	54.5	-9.0	71.5	7.5	76.3	-15.3	128.58	1.7	130.96	-1.8	98.2	3.5	70.12	-7.5	93.66	5.5	74.9	-12.3
	Running 3 Month	44.1	-33.2	68.4	18.3	64.4	-43.6	150.82	15.1	145.47	-5.5	103.7	21.8	66.46	-23.2	99.57	11.8	66.7	-31.3
	Running 12 Month	54.5	-9.0	71.5	7.5	76.3	-15.3	128.58	1.7	130.96	-1.8	98.2	3.5	70.12	-7.5	93.66	5.5	74.9	-12.3
Weekday/Weekend																			
Weekday (Sun-Thu)	Current Month	16.0	-55.0	48.6	20.1	33.0	-62.6	87.77	-2.2	102.33	-1.1	85.8	-1.1	14.09	-56.0	49.75	18.8	28.3	-63.0
	Year To Date	31.5	-10.1	62.2	7.8	50.6	-16.6	105.96	8.4	118.57	0.0	89.4	8.3	33.36	-2.6	73.81	7.8	45.2	-9.7
	Running 3 Month	28.1	-30.7	60.3	13.5	46.6	-39.0	115.45	12.4	121.59	-3.4	95.0	16.4	32.41	-22.1	73.34	9.6	44.2	-28.9
	Running 12 Month	31.5	-10.1	62.2	7.8	50.6	-16.6	105.96	8.4	118.57	0.0	89.4	8.3	33.36	-2.6	73.81	7.8	45.2	-9.7
Weekend (Fri-Sat)	Current Month	17.4	-61.8	45.8	34.4	38.1	-71.6	104.63	11.3	98.09	-3.4	106.7	15.3	18.25	-57.5	44.95	29.8	40.6	-67.2
	Year To Date	53.7	-9.8	72.4	8.7	74.1	-17.0	126.51	1.2	130.83	-1.1	96.7	2.4	67.88	-8.7	94.69	7.5	71.7	-15.1
	Running 3 Month	40.7	-35.4	68.3	18.2	59.7	-45.3	149.05	15.3	143.88	-4.0	103.6	20.1	60.73	-25.5	98.21	13.4	61.8	-34.3
	Running 12 Month	53.7	-9.8	72.4	8.7	74.1	-17.0	126.51	1.2	130.83	-1.1	96.7	2.4	67.88	-8.7	94.69	7.5	71.7	-15.1
Total	Current Month	16.2	-58.2	47.9	24.6	33.9	-66.4	93.53	2.0	101.35	-1.6	92.3	3.6	15.16	-57.3	48.51	22.7	31.3	-65.2
	Year To Date	37.6	-10.1	65.1	8.0	57.8	-16.8	114.78	5.1	122.46	-0.3	93.7	5.5	43.17	-5.5	79.75	7.7	54.1	-12.2
	Running 3 Month	31.5	-32.6	62.5	14.9	50.4	-41.3	128.16	13.3	128.48	-3.5	99.7	17.4	40.42	-23.6	80.36	10.9	50.3	-31.1
	Running 12 Month	37.6	-10.1	65.1	8.0	57.8	-16.8	114.78	5.1	122.46	-0.3	93.7	5.5	43.17	-5.5	79.75	7.7	54.1	-12.2

Tab 7 - Daily Data for the Month

Wingate by Wyndham High Point    3901 Sedgebrook St    High Point, NC 27265    Phone: (336) 812-8787  
STR # 42232    ChainID: 46797    MgtCo: None    Owner: None  
For the Month of: December 2024    Date Created: January 22, 2025    Daily Competitive Set Data Excludes Subject Property



Occupancy (%)	Su	Mo	Tu	We	Th	Fr	Sa	Su	Mo	Tu	We	Th	Fr	Sa	Su	Mo	Tu	We	Th	Fr	Sa	Su	Mo	Tu	We	Th	Fr	Sa	Su	Mo	Tu
	December																														
	1	2	3	4	5	6	7	8	9	10	11	12	13	14	15	16	17	18	19	20	21	22	23	24	25	26	27	28	29	30	31
My Property	23.5	18.5	8.6	23.5	24.7	24.7	24.7	7.4	13.6	14.8	14.8	18.5	17.3	14.8	14.8	16.0	14.8	13.6	17.3	16.0	18.5	18.5	13.6	17.3	16.0	14.8	16.0	7.4	21.0	11.1	12.3
Competitive Set	34.0	61.1	69.6	64.3	60.4	46.8	48.1	43.2	73.0	83.2	78.7	73.8	77.2	58.3	38.5	56.8	59.1	56.4	47.9	34.0	34.3	24.5	27.9	28.1	27.9	33.6	34.3	33.6	26.0	25.1	25.1
Index (MPI)	68.9	30.3	12.4	36.5	40.9	52.7	51.3	17.2	18.6	17.8	18.8	25.1	22.4	25.4	38.5	28.3	25.0	24.1	36.1	47.1	54.1	75.7	48.7	61.5	57.6	44.1	46.9	22.0	80.9	44.3	49.2

% Chg																															
My Property	26.7	-46.4	-81.1	-44.1	-35.5	-51.2	-44.4	-76.9	-74.4	-65.7	-64.7	-61.5	-66.7	-74.5	-58.6	-45.8	-55.6	-59.3	-53.3	-51.9	-64.3	-48.3	-47.6	-17.6	-40.9	-58.6	-55.2	-78.6	-43.3	-10.0	-56.5
Competitive Set	-8.4	-16.6	-12.9	-15.4	-4.3	-4.2	18.7	21.8	14.1	7.5	20.1	48.3	88.1	29.9	27.5	39.1	31.1	35.9	38.9	13.5	5.2	-12.9	27.2	-13.7	-22.5	3.3	-11.5	9.0	10.9	20.4	-19.2
Index (MPI)	38.2	-35.8	-78.3	-33.9	-32.6	-49.1	-53.2	-81.0	-77.6	-68.1	-70.6	-74.1	-82.3	-80.3	-67.5	-61.0	-66.1	-70.0	-66.4	-57.6	-66.1	-40.6	-58.8	-4.5	-23.8	-59.9	-49.3	-80.3	-48.9	-25.3	-46.2

ADR	December																															
	1	2	3	4	5	6	7	8	9	10	11	12	13	14	15	16	17	18	19	20	21	22	23	24	25	26	27	28	29	30	31	
	My Property	89.51	88.21	84.90	80.56	85.74	128.55	105.92	76.48	90.70	94.83	91.75	87.34	108.17	133.68	72.24	83.15	90.59	90.36	89.91	97.47	78.76	76.91	93.05	93.15	93.22	76.12	83.80	79.61	96.19	81.78	110.88
	Competitive Set	101.57	104.41	107.19	104.92	94.52	96.80	99.98	96.33	100.93	105.94	110.81	103.69	109.11	97.51	93.63	104.04	113.20	115.12	99.93	89.96	89.15	92.74	95.04	84.44	84.88	92.37	90.87	95.69	93.83	109.48	92.29
Index (ARI)	88.1	84.5	79.2	76.8	90.7	132.8	105.9	79.4	89.9	89.5	82.8	84.2	99.1	137.1	77.2	79.9	80.0	78.5	90.0	108.3	88.3	82.9	97.9	110.3	109.8	82.4	92.2	83.2	102.5	74.7	120.1	

% Chg																															
My Property	2.1	-4.6	1.6	-10.4	3.6	50.2	17.6	-13.4	7.7	15.1	9.9	-6.2	6.3	37.3	-18.7	-5.2	5.4	0.5	5.3	17.9	-14.8	-16.6	7.1	13.0	6.1	-17.3	-5.1	-26.0	-31.1	-6.5	19.2
Competitive Set	5.3	-2.7	-7.3	-6.1	-8.2	-3.1	3.3	-2.1	-2.6	0.6	4.7	-6.5	9.9	-14.6	1.5	-6.3	14.8	17.7	14.7	5.6	2.4	11.3	7.3	-24.4	-11.7	-10.2	-11.9	-21.1	-2.7	12.7	-21.0
Index (ARI)	-3.1	-2.0	9.7	-4.6	12.9	55.0	13.8	-11.5	10.6	14.4	5.0	0.4	-3.3	60.9	-19.8	1.1	-8.2	-14.6	-8.2	11.6	-16.8	-25.1	-0.2	49.6	20.2	-7.9	7.7	-6.2	-29.1	-17.0	50.9

RevPAR	December																															
	1	2	3	4	5	6	7	8	9	10	11	12	13	14	15	16	17	18	19	20	21	22	23	24	25	26	27	28	29	30	31	
	My Property	21.00	16.34	7.34	18.90	21.17	31.74	26.15	5.66	12.32	14.05	13.59	16.17	18.70	19.80	10.70	13.34	13.42	12.27	15.54	15.64	14.59	14.24	12.64	16.10	14.96	11.28	13.45	5.90	20.19	9.09	13.69
	Competitive Set	34.58	63.76	74.57	67.42	57.11	45.31	48.07	41.61	73.66	88.13	87.23	76.55	84.27	56.84	36.06	59.10	66.96	64.91	47.84	30.62	30.54	22.69	26.49	23.72	23.66	31.05	31.13	32.17	24.36	27.49	23.17
	Index (RGI)	60.7	25.6	9.8	28.0	37.1	70.1	54.4	13.6	16.7	15.9	15.6	21.1	22.2	34.8	29.7	22.6	20.0	18.9	32.5	51.1	47.8	62.8	47.7	67.9	63.2	36.3	43.2	18.3	82.9	33.1	59.1

% Chg																															
My Property	29.3	-48.9	-80.8	-49.9	-33.2	-26.7	-34.7	-80.0	-72.5	-60.5	-61.2	-63.9	-64.6	-64.9	-66.3	-48.7	-53.1	-59.1	-50.9	-43.2	-69.6	-56.9	-43.9	-6.9	-37.3	-65.8	-57.4	-84.1	-60.9	-15.9	-48.2
Competitive Set	-3.5	-18.8	-19.3	-20.6	-12.2	-7.2	22.6	19.2	11.1	8.2	25.8	38.6	106.8	10.9	29.3	30.3	50.6	60.0	59.3	19.8	7.8	-3.0	36.5	-34.8	-31.5	-7.3	-22.0	-14.0	7.9	35.7	-36.1
Index (RGI)	34.0	-37.1	-76.2	-37.0	-23.9	-21.0	-46.7	-83.2	-75.2	-63.5	-69.2	-74.0	-82.9	-68.4	-74.0	-60.6	-68.9	-74.4	-69.2	-52.6	-71.8	-55.5	-58.9	42.8	-8.4	-63.1	-45.4	-81.6	-63.8	-38.0	-18.8

2025 © CoStar Group. This STR Report is a publication of STR, LLC and STR Global, Ltd., CoStar Group companies, and is intended solely for use by paid subscribers. The information in the STR Report is provided on an "as is" and "as available" basis and should not be construed as investment, tax, accounting or legal advice. Reproduction or distribution of this STR Report, in whole or part, without written permission is prohibited and subject to legal action. If you have received this report and are NOT a subscriber to this STR Report, please contact us immediately. Source: 2025 STR, LLC / STR Global, Ltd. trading as "STR".



How can we assist you?

**Glossary:**

For all STR definitions, please click here or visit [www.str.com/data-insights/resources/glossary](http://www.str.com/data-insights/resources/glossary)

**Frequently Asked Questions (FAQ):**

For all STR FAQs, please click here or visit [www.str.com/data-insights/resources/FAQ](http://www.str.com/data-insights/resources/FAQ)

For additional support, please [contact](#) your regional office.

For the latest in industry news, visit [HotelNewsNow.com](http://HotelNewsNow.com).

To learn more about the Hotel Data Conference, visit [HotelDataConference.com](http://HotelDataConference.com).