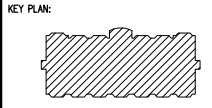




PROJECT:
**PROPOSED 75 UNIT
 COAH DEVELOPMENT
 AT I-PARK**
 LOT 1.19, BLOCK 89
 45 RIVER ROAD (BOROUGH OF EDGEWATER,
 BERGEN COUNTY, NEW JERSEY)

DEVELOPERS:
**DAIBES
 ENTERPRISES**
 1000 PORTSIDE DRIVE
 EDGEWATER, NJ 07020



REV NO.	DATE	DESCRIPTION
	07.24.20	REVISED
	07.03.19	REVISED
	11.09.18	REVISED
	10.18.18	REVISED
	08.24.17	FOR D.O.B. FILING

STRUCTURAL ENGINEERS:
 NACAMULI ASSOCIATES L.L.C.
 CONSULTING ENGINEERS
 2 CITY HALL PLAZA, 2ND FL.
 RAINHAWK, NJ 07060
 908-289-3866

MECHANICAL ENGINEERS:

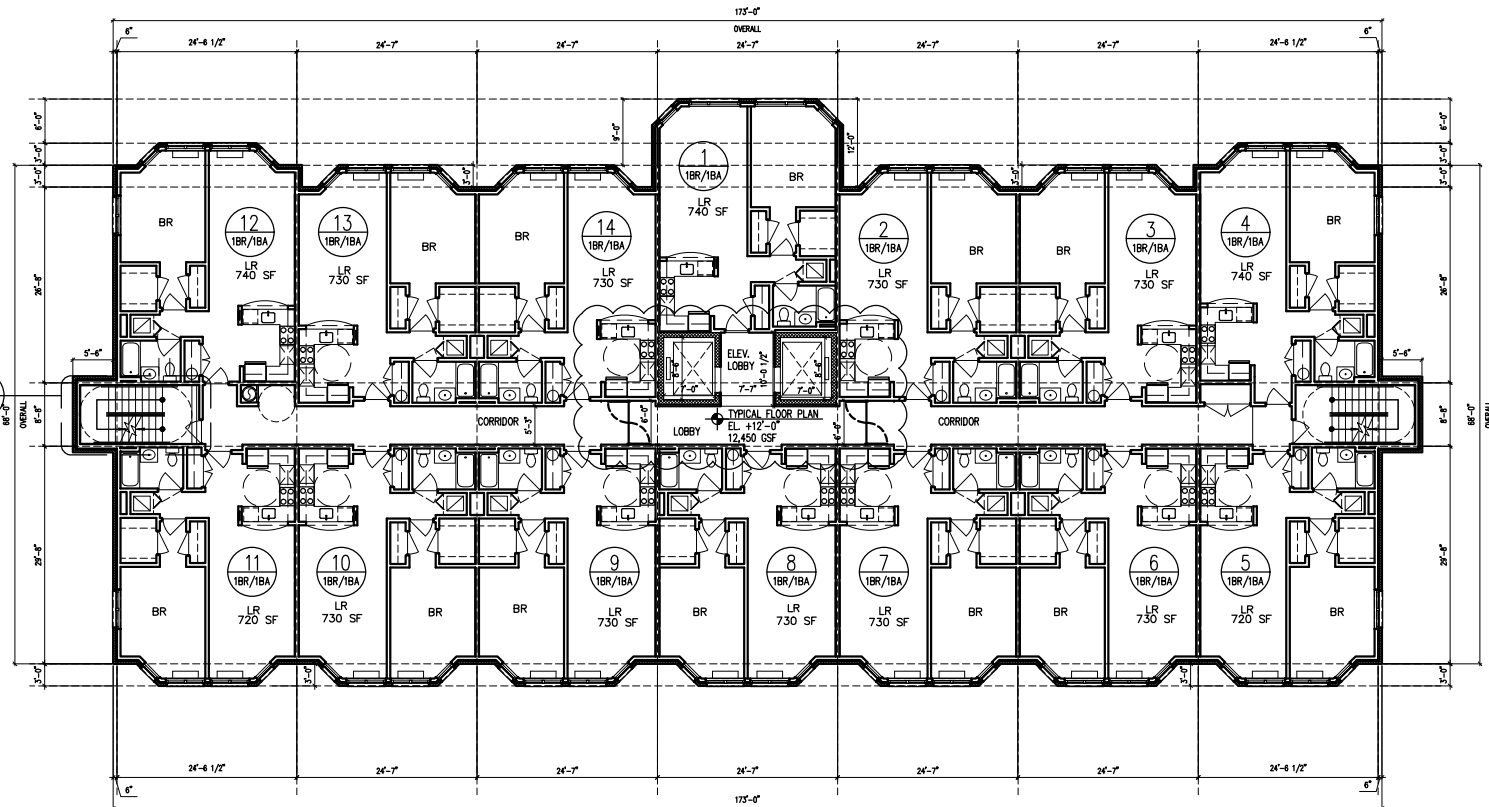
SEAL:

 VIJAY T. KALE, NJ LIC # 68373

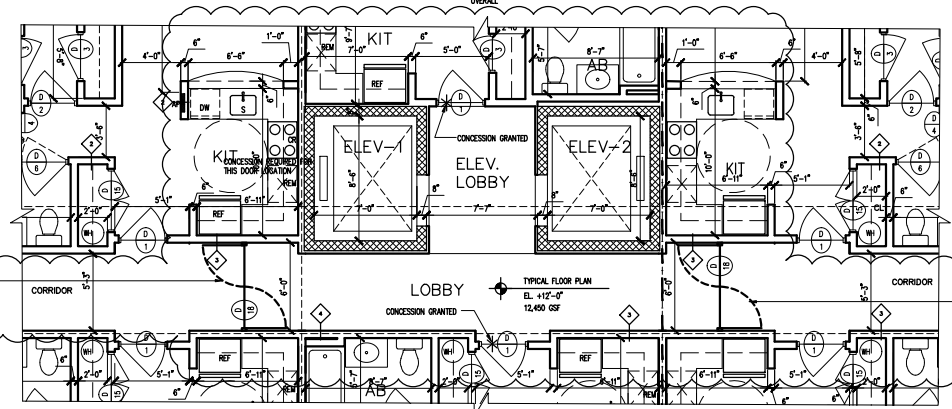
ARCHITECTS:
 DAIBES DESIGN GROUP, LLC.
 1000 PORTSIDE DRIVE
 EDGEWATER, NJ 07020

DRAWING TITLE:
**TYPICAL FLOOR PLAN
 (2 THRU 6)
 OVERALL**

DATE : JAN. 9, 2017	DWG NO. :
SCALE : 1/8" = 1'-0"	A
DRWN BY :	102
CHKD BY :	



① TYPICAL FLOOR PLAN— OVERALL
 1/8" = 1'-0"



② TYPICAL FLOOR PLAN— PARTIAL
 1/4" = 1'-0"

(2) 2'-8" x 7'-0" x 1 3/4" DOOR W/ FLUSH PANEL, F.P.S.C. 45 MIN. TEST, SWING DOOR LEFT IN OPEN POSITION, ARRANGED TO CLOSE AUTOMATICALLY BY CLOSING DEVICE ACTIVATED BY FIRE ALARM & SMOKE DETECTOR SYSTEM.

(2) 2'-8" x 7'-0" x 1 3/4" DOOR W/ FLUSH PANEL, F.P.S.C. 45 MIN. TEST, SWING DOOR LEFT IN OPEN POSITION, ARRANGED TO CLOSE AUTOMATICALLY BY CLOSING DEVICE ACTIVATED BY FIRE ALARM & SMOKE DETECTOR SYSTEM.